

***CITY OF FAYETTEVILLE, ARKANSAS
QUARTERLY MANAGEMENT REPORT
First Quarter 2013***

MAYOR

Lioneld Jordan

CITY COUNCIL

Adella Gray
Mark Kinion
Justin Tennant
Rhonda Adams

Ward 1, Position 1
Ward 2, Position 1
Ward 3, Position 1
Ward 4, Position 1

Sarah Marsh
Matthew Petty
Martin W. Schoppmeyer Jr.
Alan Long

Ward 1, Position 2
Ward 2, Position 2
Ward 3, Position 2
Ward 4, Position 2

ELECTED OFFICIALS

Kit Williams - City Attorney
Sondra Smith - City Clerk/Treasurer
Rudy Moore, Jr. - District Court Judge

SENIOR DEPARTMENT DIRECTORS / EXECUTIVE STAFF

Paul A. Becker - Finance Director
Connie Edmonston - Parks & Recreation Director
David Jurgens - Utilities Director
Jeremy Pate - Development Services Director
Greg Tabor - Police Chief

David Dayringer - Fire Chief
Terry Gulley - Transportation Services Director
Don Marr - Chief of Staff
Lindsley Smith - Communications Director

2013 FIRST QUARTER -- TABLE OF CONTENTS

I.	SPECIAL EVENT STATISTICS	1
II.	FINANCE	
	City Sales Tax	2
	City's Portion of the County Sales Tax	3
	Franchise Fees	4
	Parks Development HMR Tax	5
	State Turnback – General and Street Funds	6
	Impact Fees	7
	District Court Activity	8-9
III.	BUILDING RELATED ACTIVITIES	
	Building Permits	10
	Building Permit Fees Collected	11
	Code Compliance Service Requests	12
	Dwelling Units Approved	13
	Non Residential Square Footage Approved	14
IV.	ENTERPRISE ACTIVITIES	
	Airport.....	15-16
	Water & Sewer	17-22
	Solid Waste & Recycling	23-26
V.	TRANSPORTATION & RECREATION	
	Street Operations	27-28
	Trails	29
	Transportation Bond Program	30
	Parks & Recreation	31-32
	Library	33-34
VI.	PUBLIC SAFETY	
	Police	35-38
	Fire	39-40
	Animal Services	41
VII.	INTERNAL ACTIVITIES	
	Human Resources	42-43
VIII.	BUDGET ADMENDMENTS	
	Summary by Funding Source.....	44
	Detail by Fund	45-49

Special Events which affect the City:

Sales tax collections continue to increase through the first quarter of 2013. Building permit revenue is slightly up compared to last year. Impact fees are, however, down.

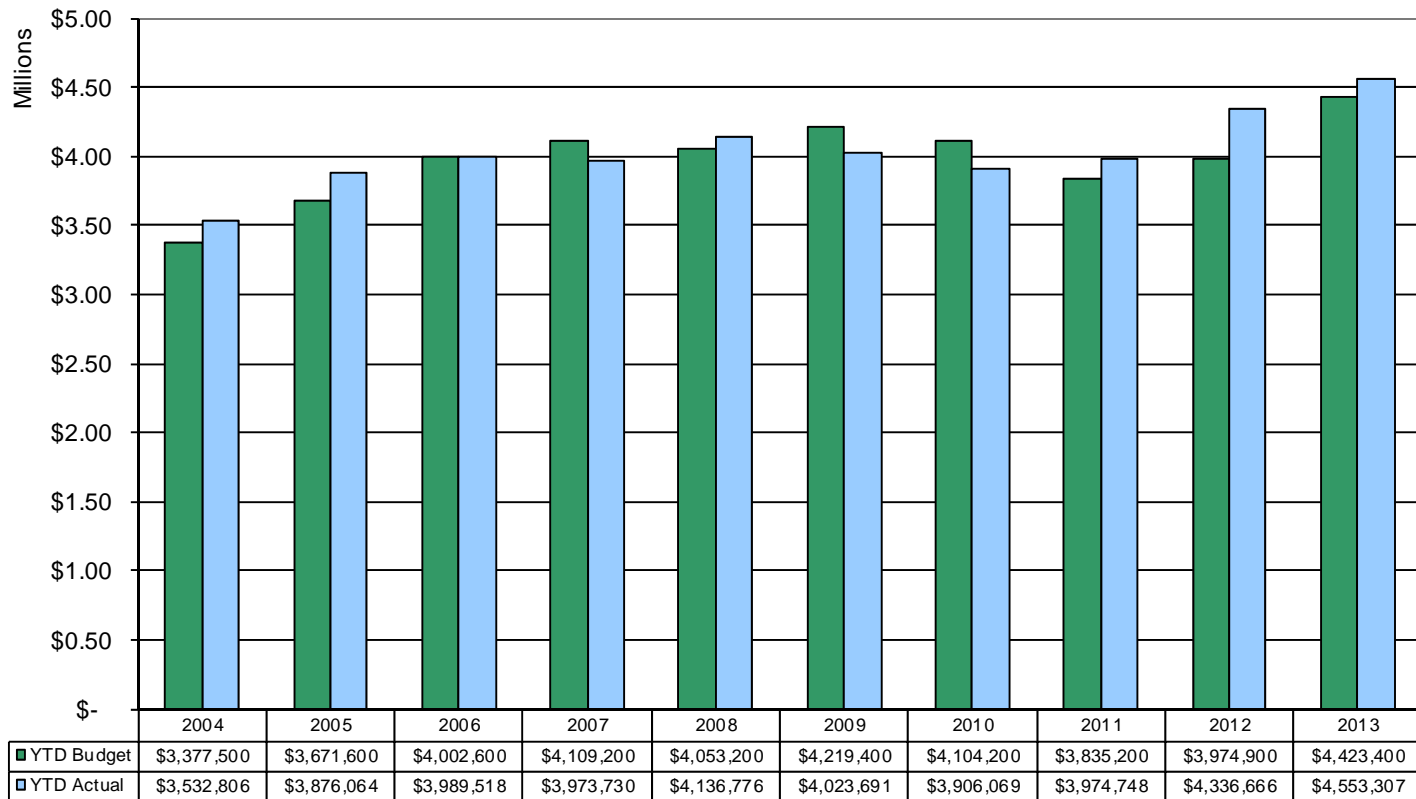
For project updates:

Transportation Bond Issue:

http://www.accessfayetteville.org/government/projects/Transportation_Improvement_Bond_Program/index.cfm

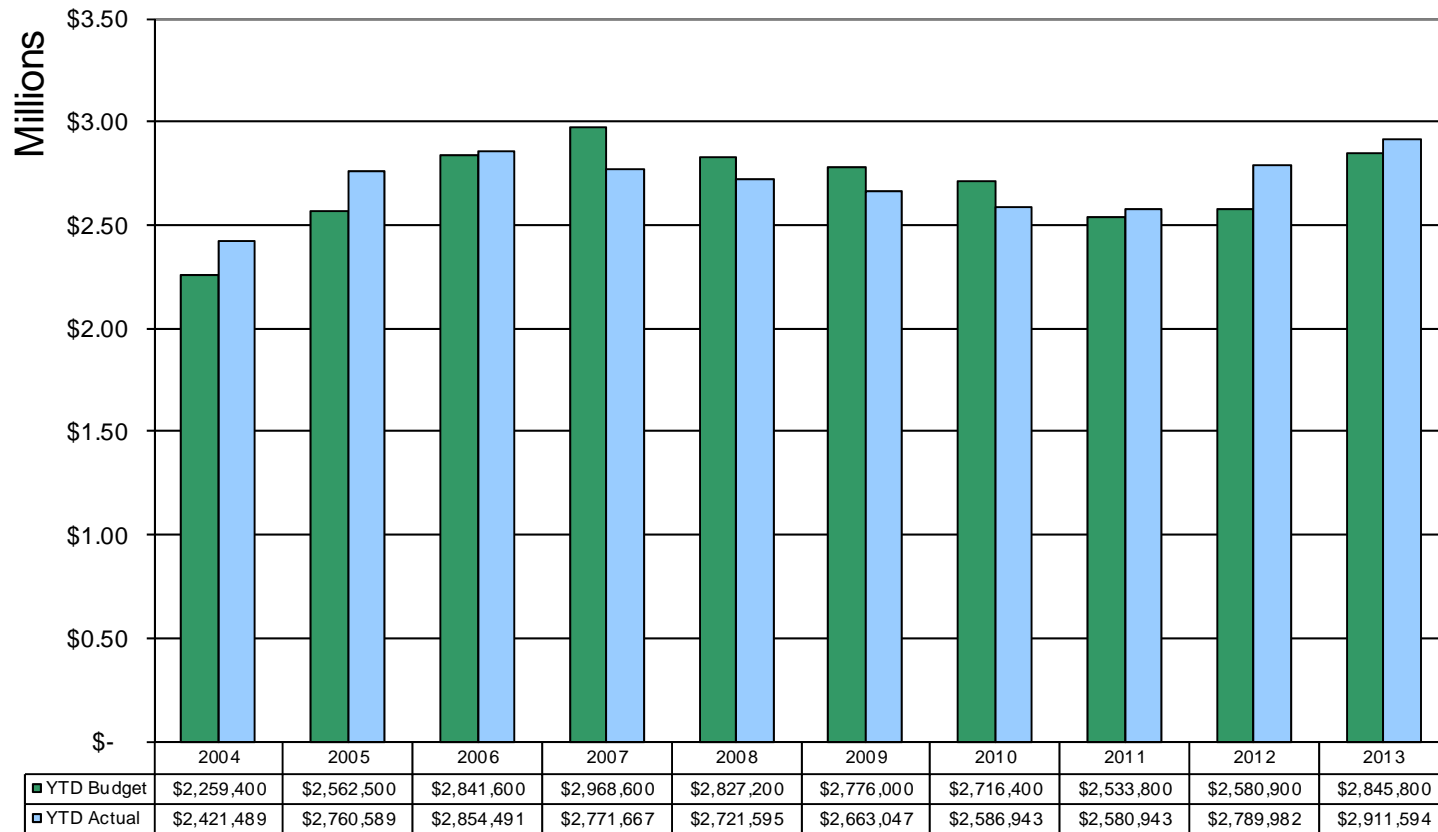
Comment: City sales tax collections are up 5% over prior year at the end of the first quarter. This is a \$129,907 increase over budget.

City Sales Tax Adopted Budgeted Revenues Compared to Actual Collections Year-to-Date



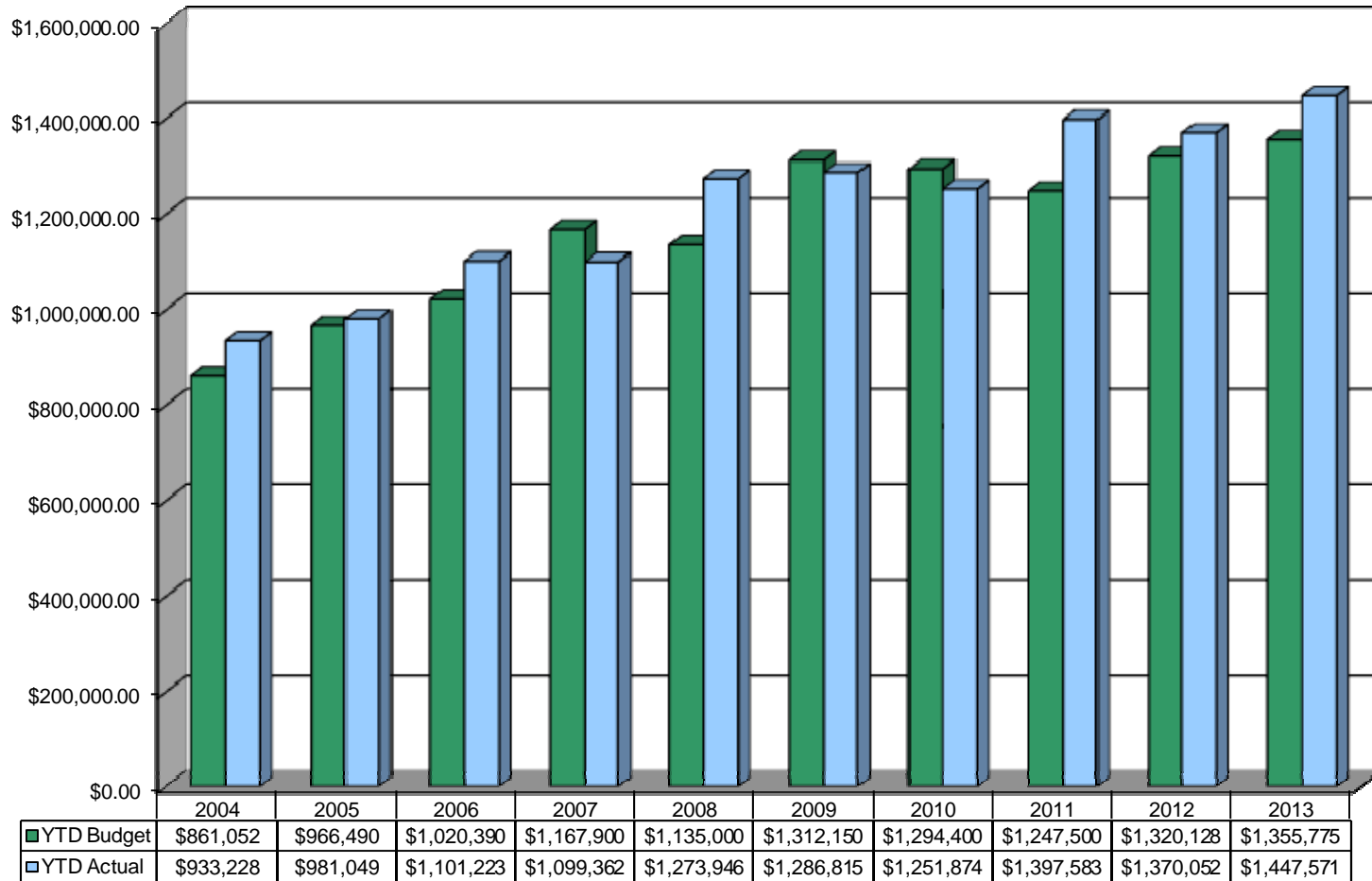
Comment: The City's portion of County sales tax is up 4.4% compared to last year. This is \$65,794 over budget.

City's Portion of the County Sales Tax Adopted Budgeted Revenues Compared to Actual Collections Year-to-Date



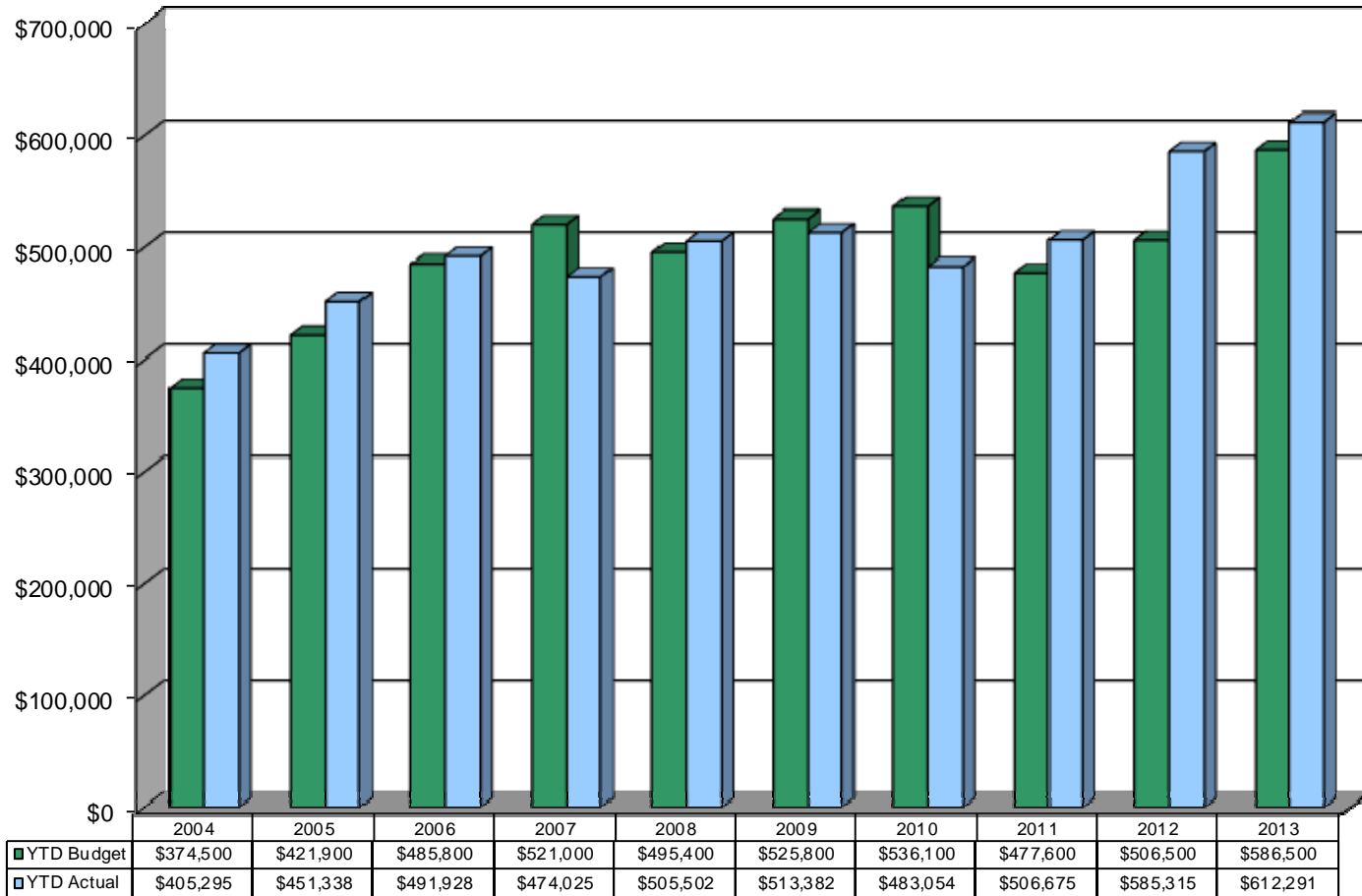
Comment: Franchise fee receipts were up 5.7% compared to last year and over budget by 6.3% for the first quarter.

Franchise Fees



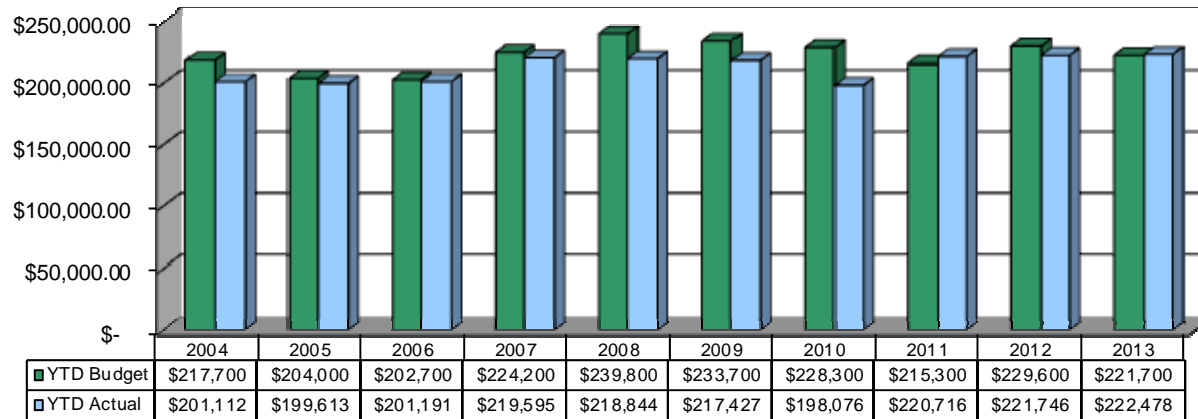
Comment: HMR taxes are 4.6% over last year's collections. This was \$25,791 over budget.

Parks Development HMR Tax

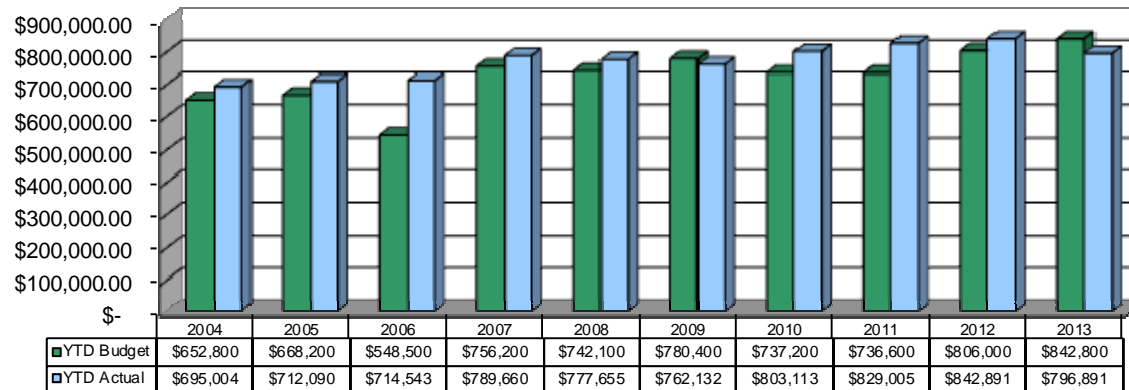


Comment: State Turnback was basically flat compared to last year for the General Fund. Street Fund was over 5.0% under last year's receipts for the first quarter of 2013.

State Turnback - General Fund

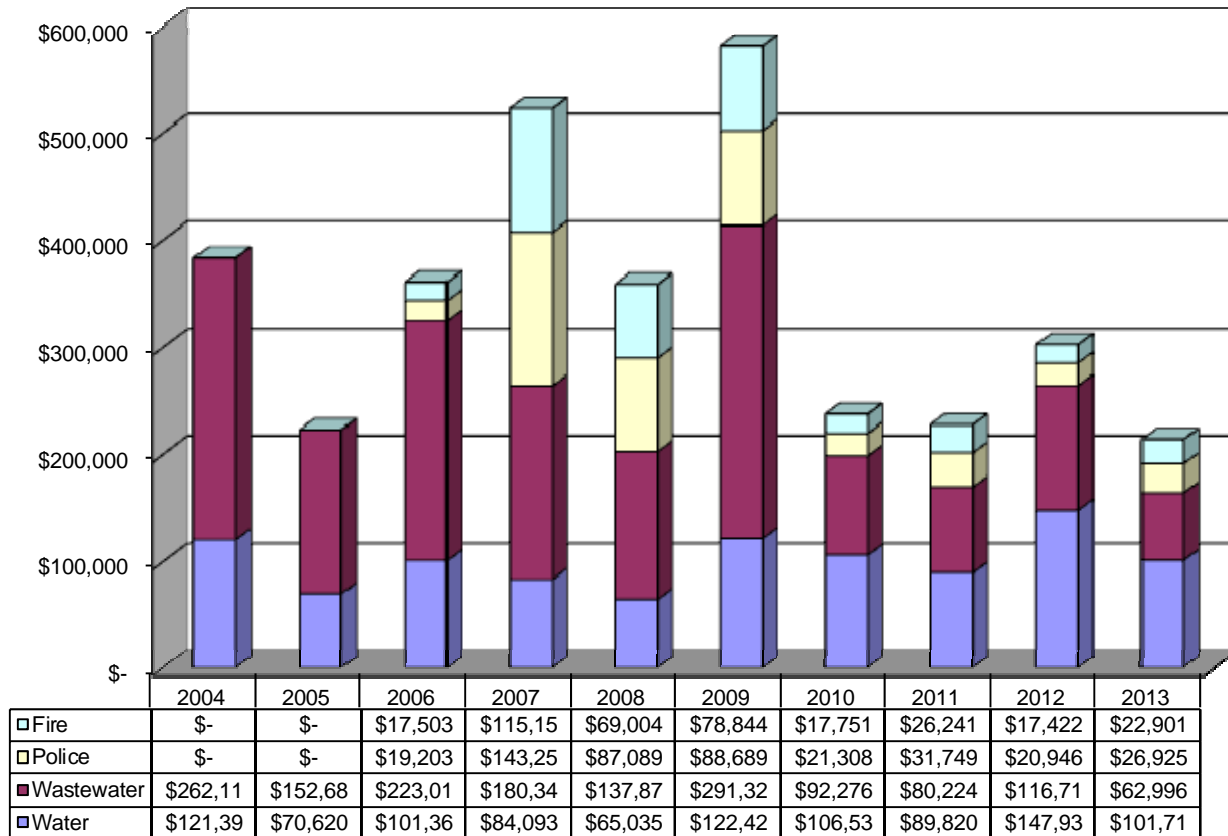


State Turnback - Street Fund



Comment: Impact fees are down 20.0% compared to last year. This is due to the unusually large number of new developments that were occupied in the first quarter of last year.

Impact Fee Revenues Year to Date



District Court Cases

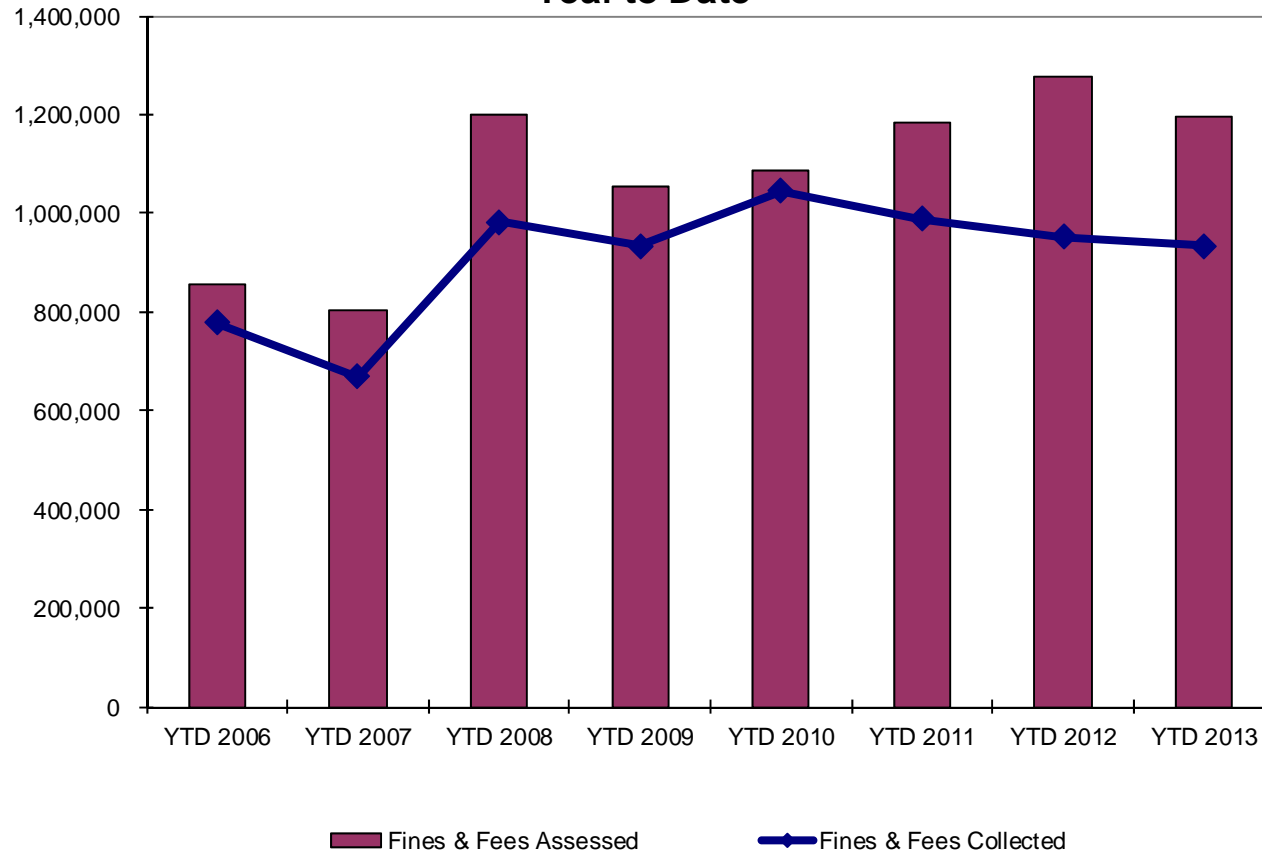
	2008	2009	2010	2011	2012	2013
	Year-to-Date	Year-to-Date	Year-to-Date	Year-to-Date	Year-to-Date	Year-to-Date
Criminal						
Cases Filed	7,749	7,148	6,408	5,883	8,561	5,568
Cases Adjudicated	6,882	9,587	8,892	8,442	8,540	7,583
Probation						
Interviews Conducted	212	362	701	620	118	101
Persons / Hours of Public Service Assigned	38 / 876	39 / 2,611	86 / 4,945	77 / 2,120	159 / 1,274	38 / 1,133
Small Claims						
Cases Filed	450	576	882	843	703	431

District Court Fines & Fees

	2008	2009	2010	2011	2012	2013
	Year-to-Date	Year-to-Date	Year-to-Date	Year-to-Date	Year-to-Date	Year-to-Date
Fines & Fees Assessed	1,200,965	1,055,042	1,085,373	1,184,071	1,276,276	1,195,078
Fines & Fees Collected	983,246	934,490	1,044,798	988,735	952,755	933,588
Fines & Fees Uncollected	217,719	120,552	40,575	195,336	323,521	261,490
% of Fees Collected	82%	89%	96%	84%	75%	78%

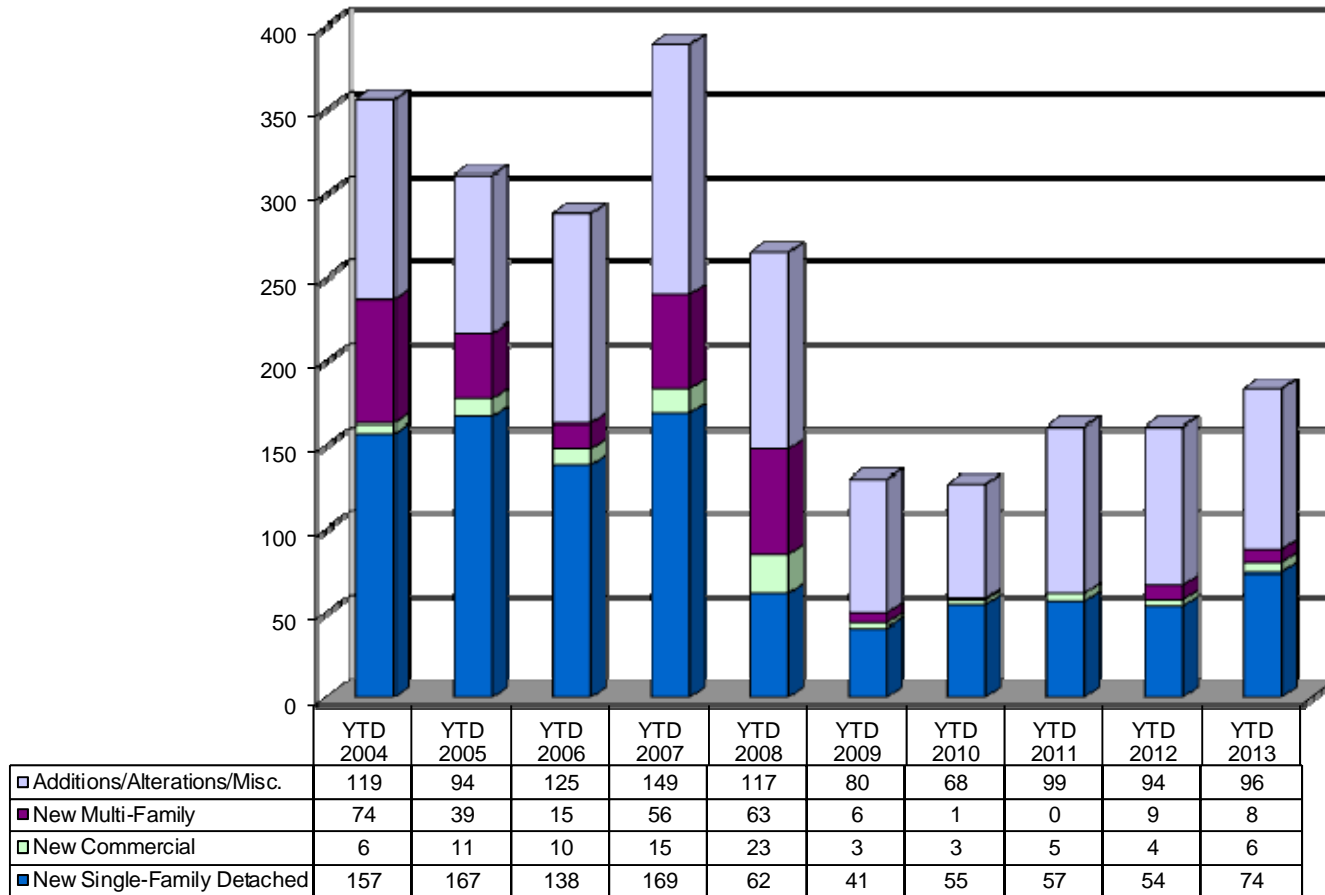
Comment:

District Court Fines & Fees Year to Date



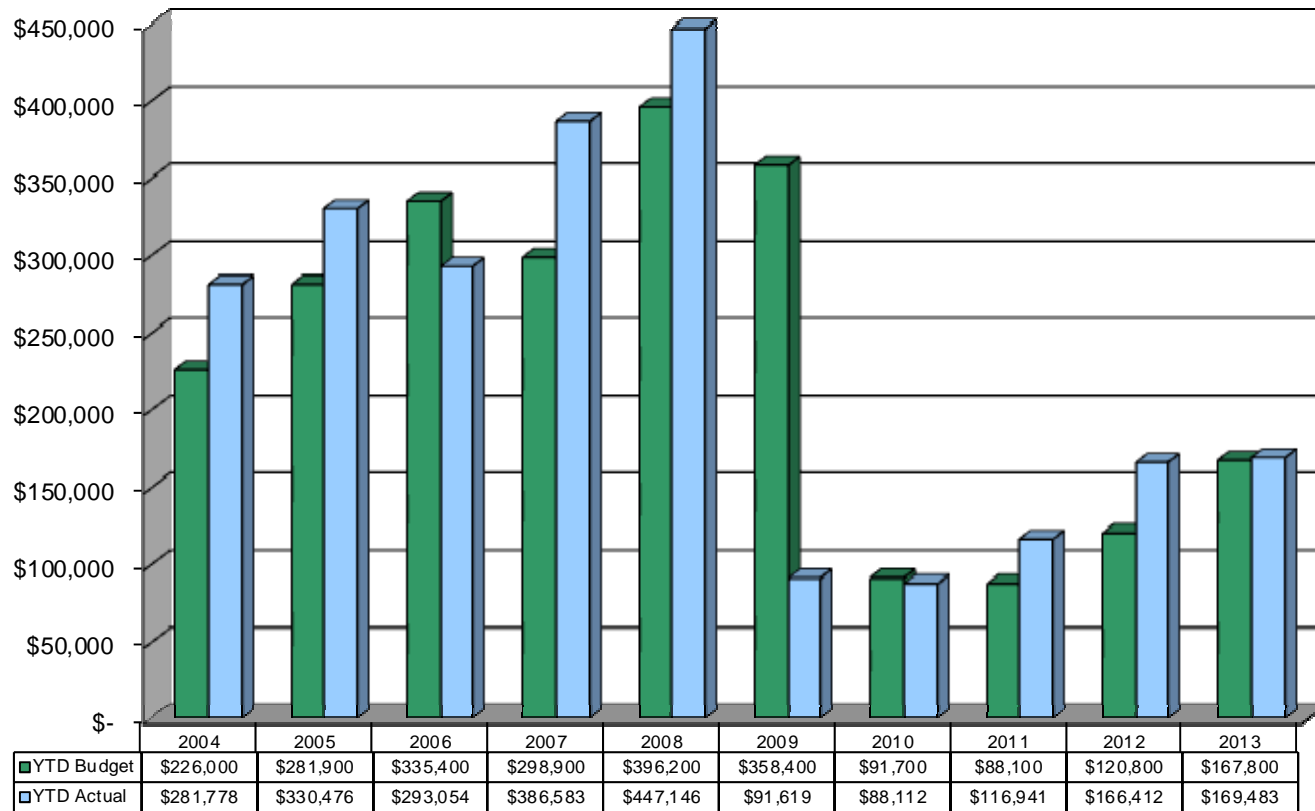
Comment: Permits continue to steadily increase from 2009 to date.

Total Building Permits Issued Year to Date



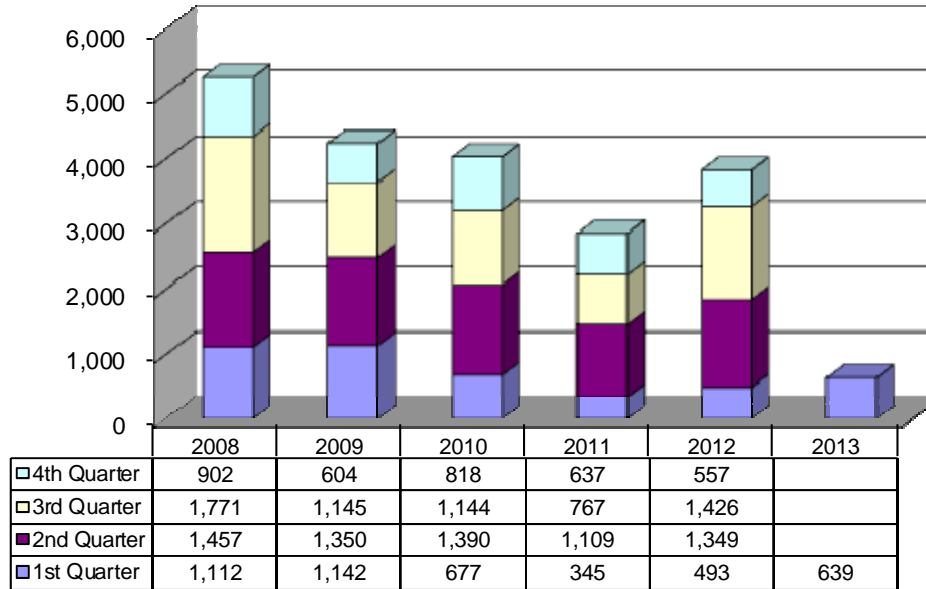
Comment: Revenue collections for the first quarter are very close to budgeted projections, equaling last year's first quarter totals.

Building Permit Fees Collected Year-to-Date



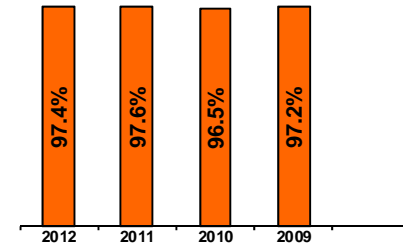
Comment: The top graph shows the amount of requests for service the Code Compliance Program works annually by quarter. The bottom graph reflects the violation abatement success rate for the past five years.

Code Compliance Service Requests



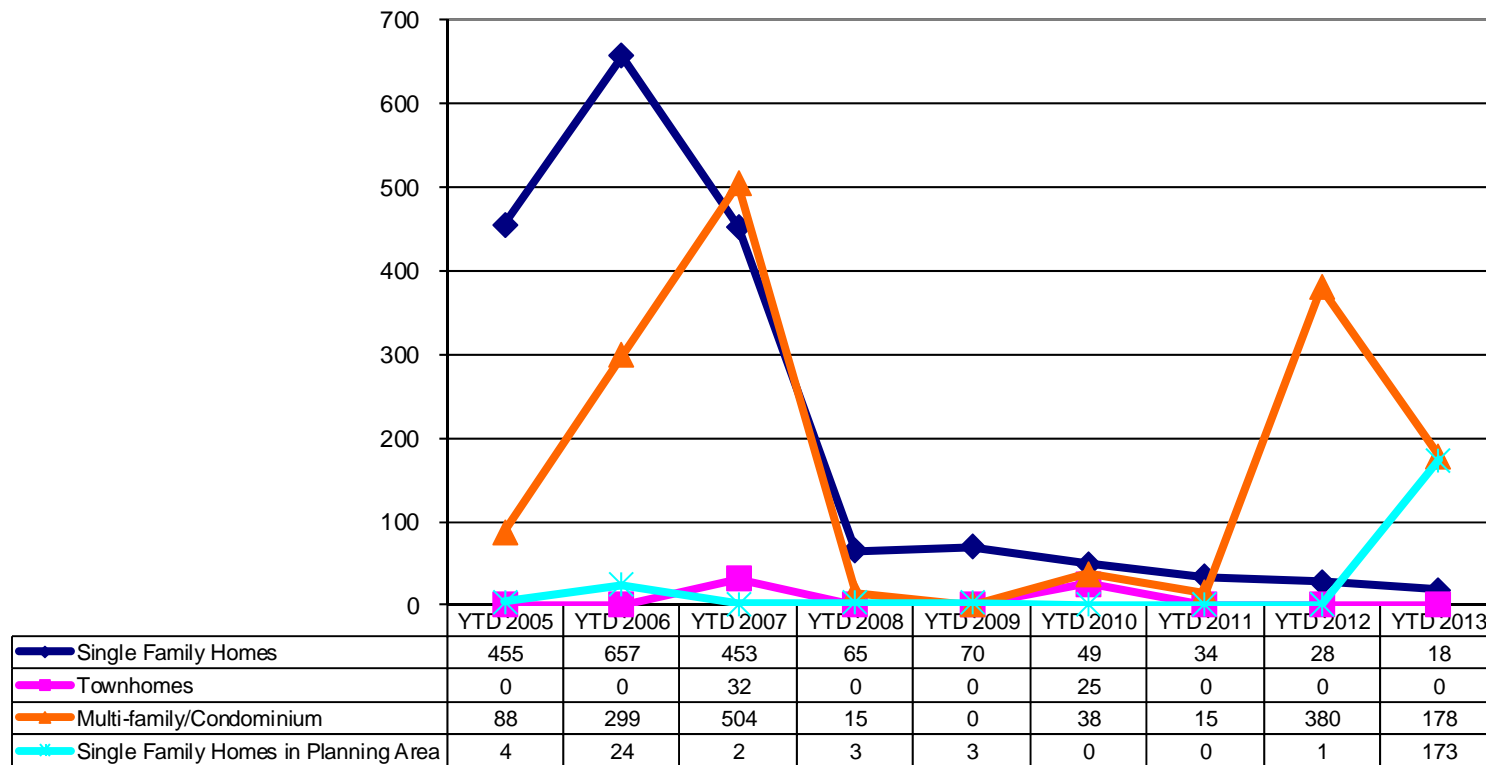
Success Rates for Code Compliance

	Total Service Requests	Violations Found	Violations Abated	Success Rate
2012	3,825	3,674	3,580	97.4%
2011	2,858	2,714	2,649	97.6%
2010	4,029	3,806	3,671	96.5%
2009	4,241	4,124	4,009	97.2%



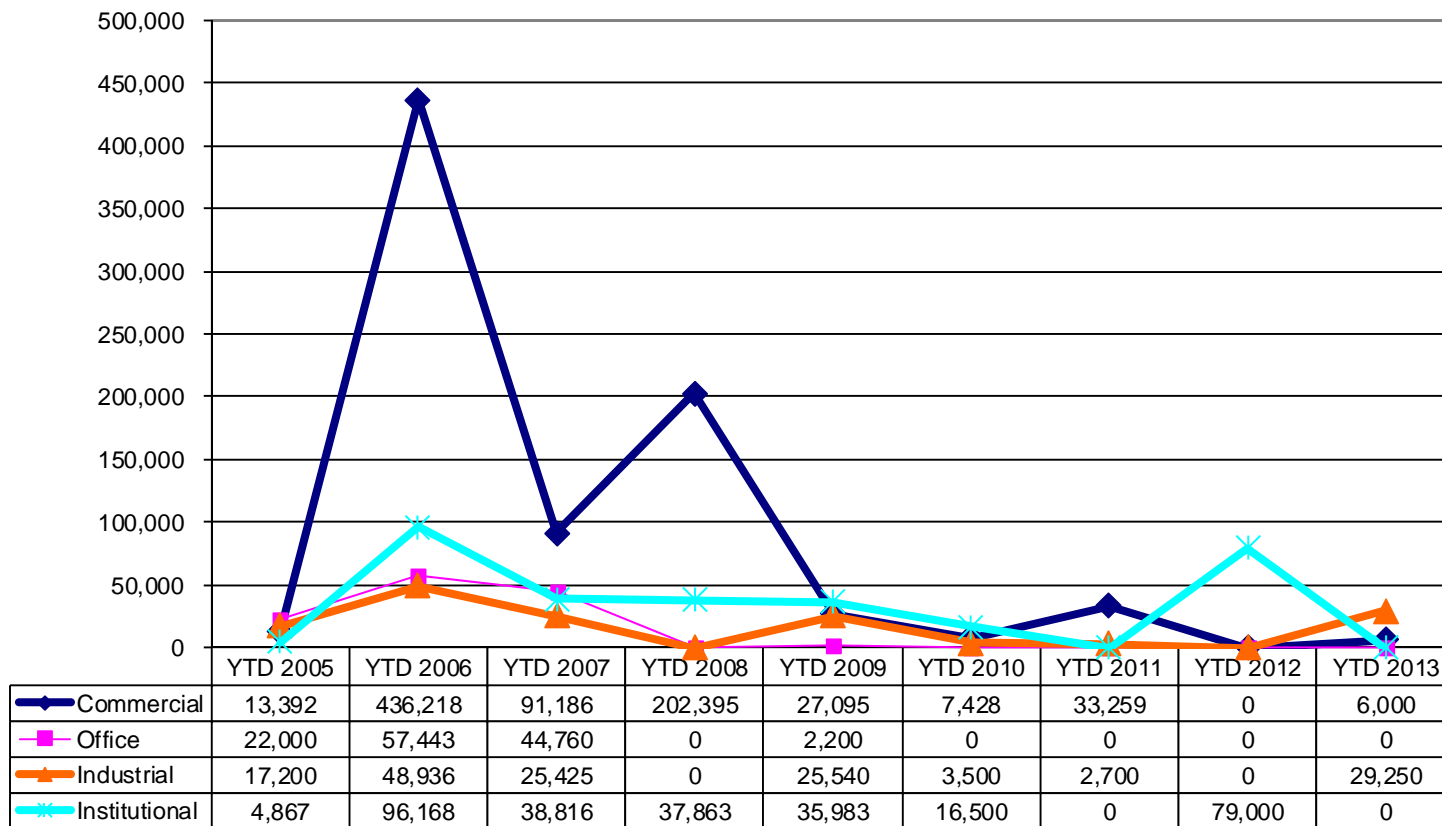
Comment: The first quarter had one relatively large multi-family student housing project and one relatively large new subdivision in the planning area.

Dwelling Units by Type Approved by the Planning Commission or Development Services



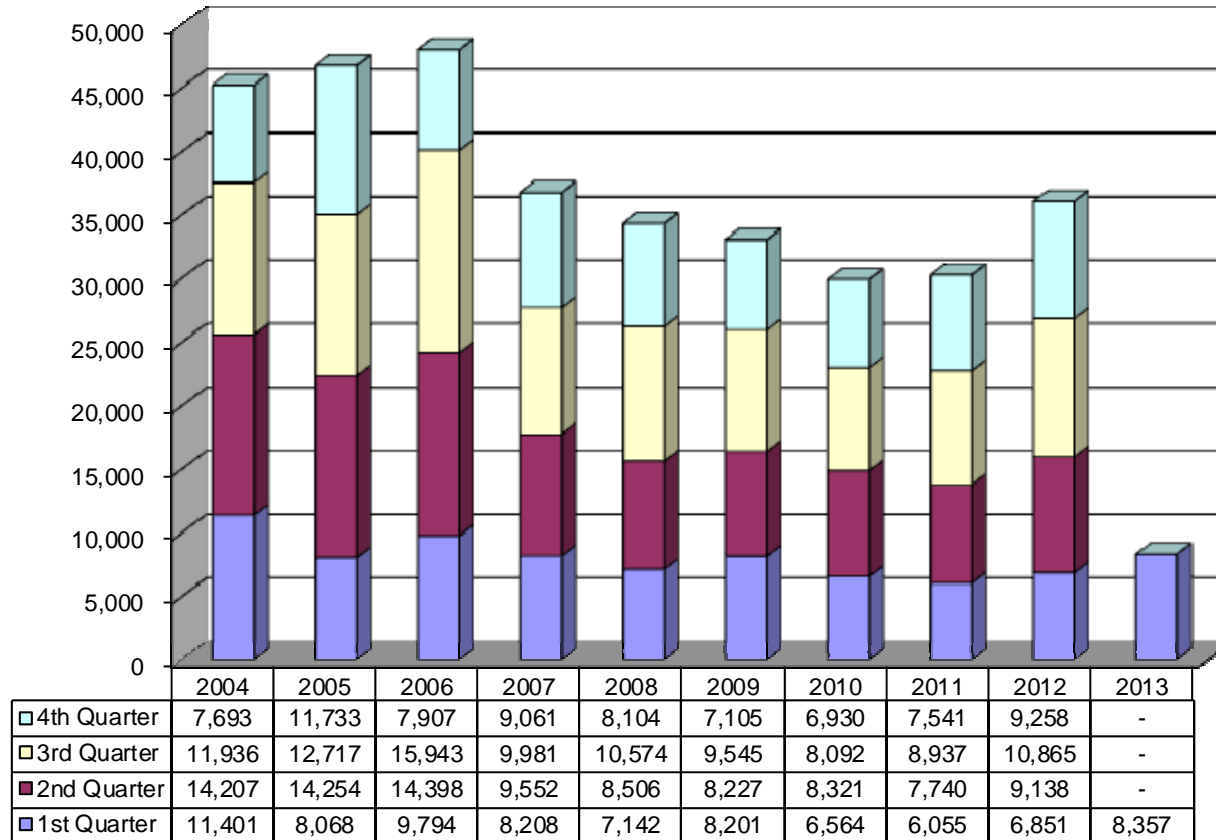
Comment: The amount of new non-residential space is moderate with two small additions to industrial businesses and a small new commercial retail building.

Non Residential Square Footage by Type Approved by the Planning Commission or Development Services



Comment: Operations in the first quarter of 2013 continue an increasing trend that began in the fourth quarter of 2011. Mild winter weather and increased military training operations have contributed to a 22% increase in activity over the first quarter of 2012.

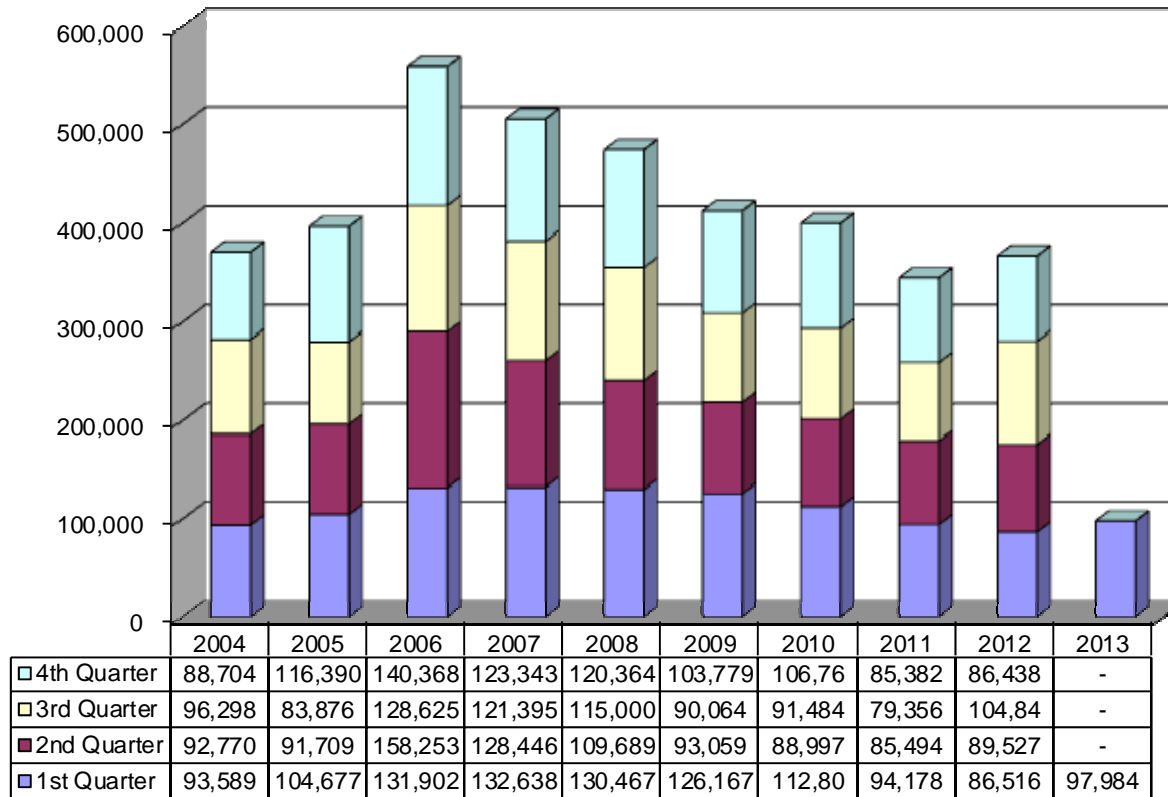
Airport Operations* (Number of Occurrences)



*A takeoff, landing, or transitioning through Drake Field airspace during tower operating hours.

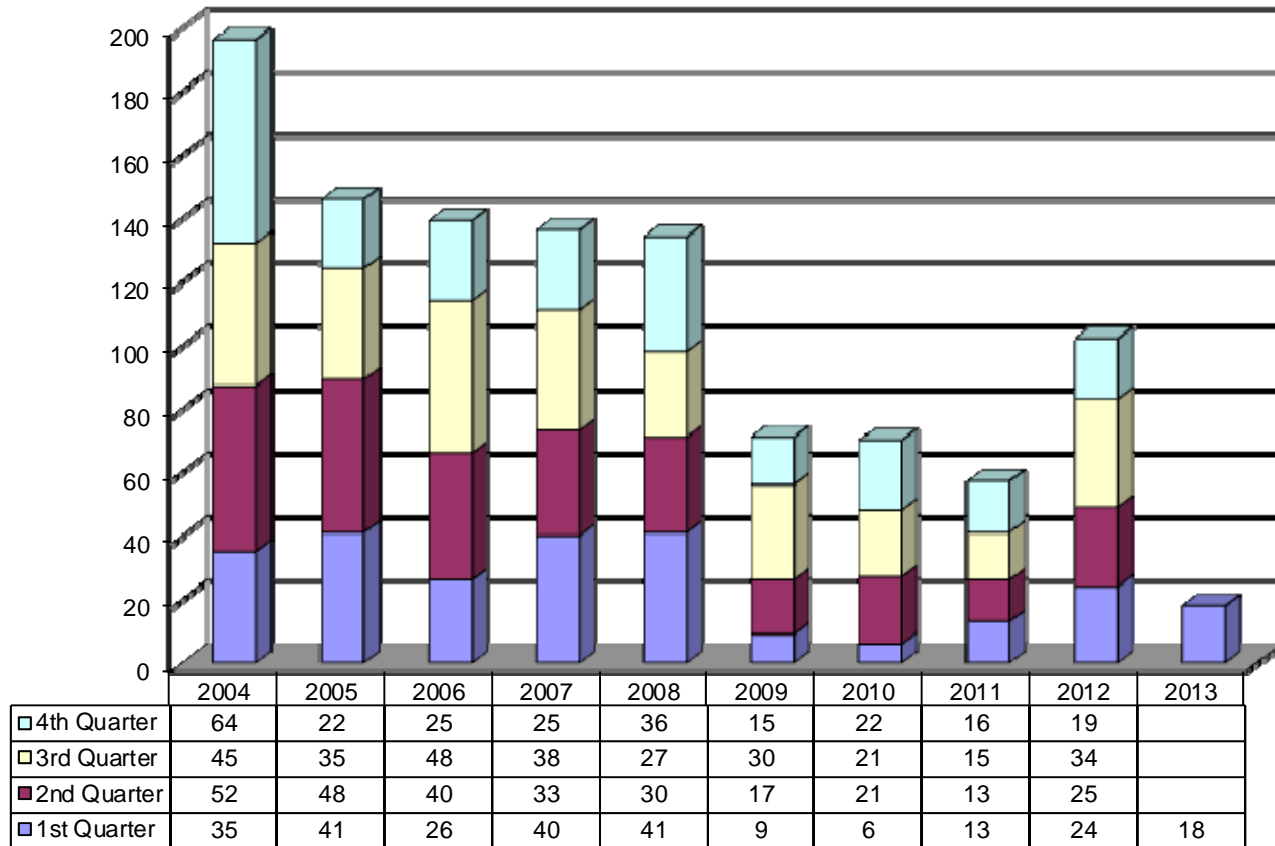
Comment: Fuel sales in the first quarter of 2013 have increased 13.3% over the same period in 2012. An improving economy, mild winter weather, and an increase in military activity are contributing factors.

Airport Fuel Sales (In Gallons)



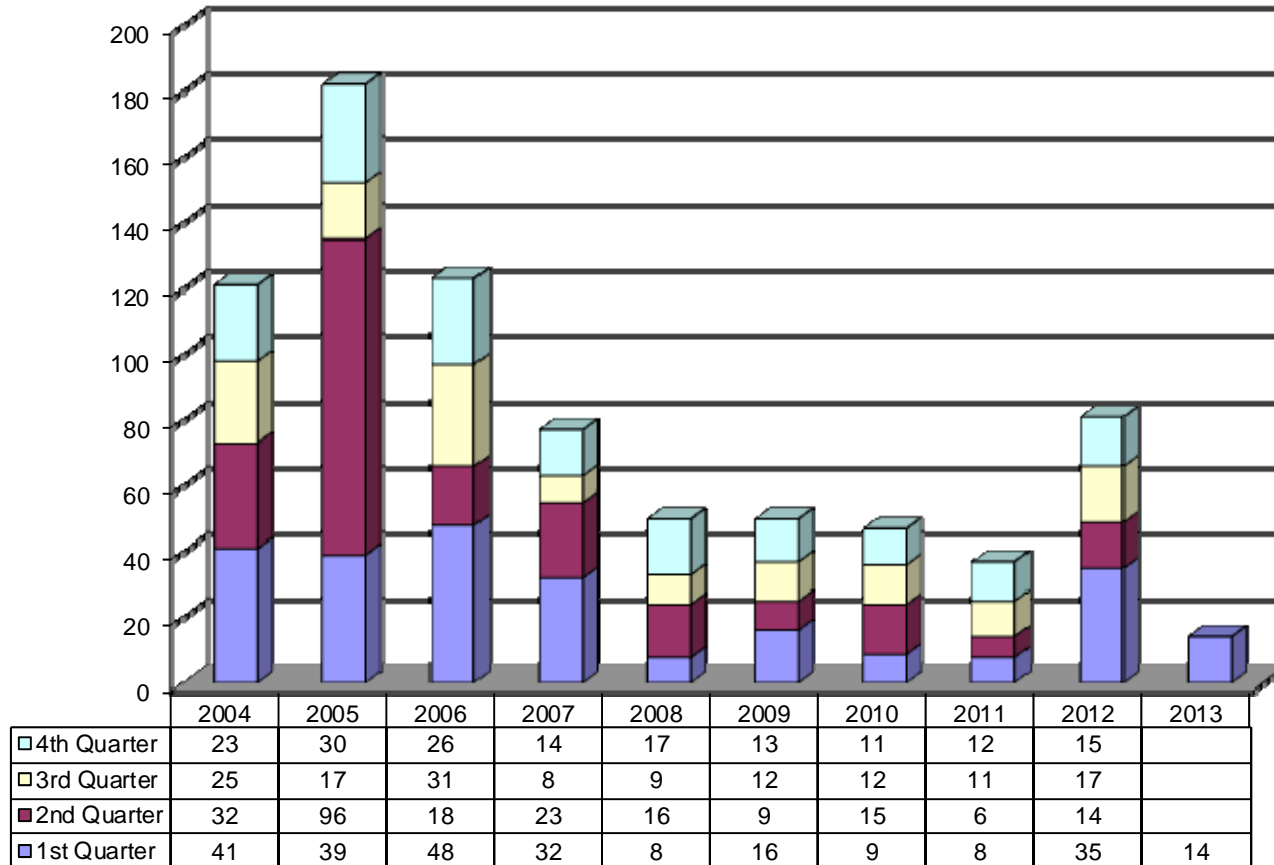
Comment: Current trends are down from the same period a year ago, but up slightly from the year before.

Number of New Water Connections Made



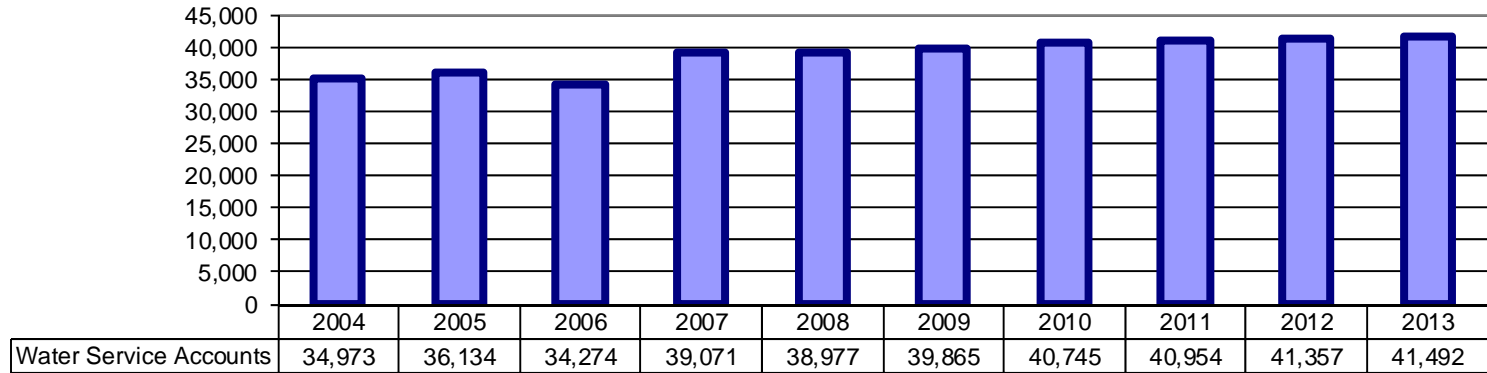
Comment: Current trends are down from the same period a year ago, but up slightly from the year before.

Number of New Sewer Connections Made

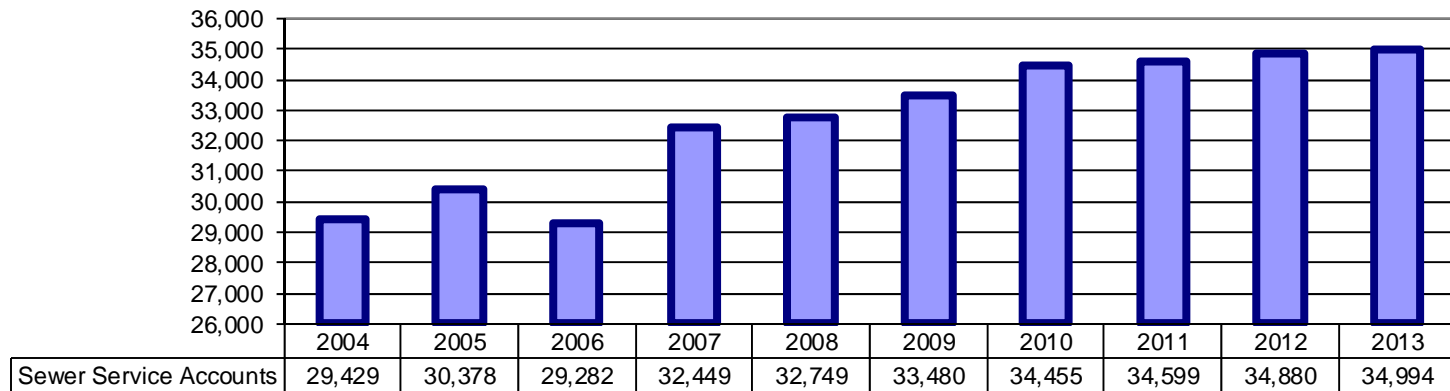


Comment: Service accounts for the first quarter of 2013 have increased slightly as anticipated. New construction is evident in most sectors of the service area.

Number of Water Service Accounts

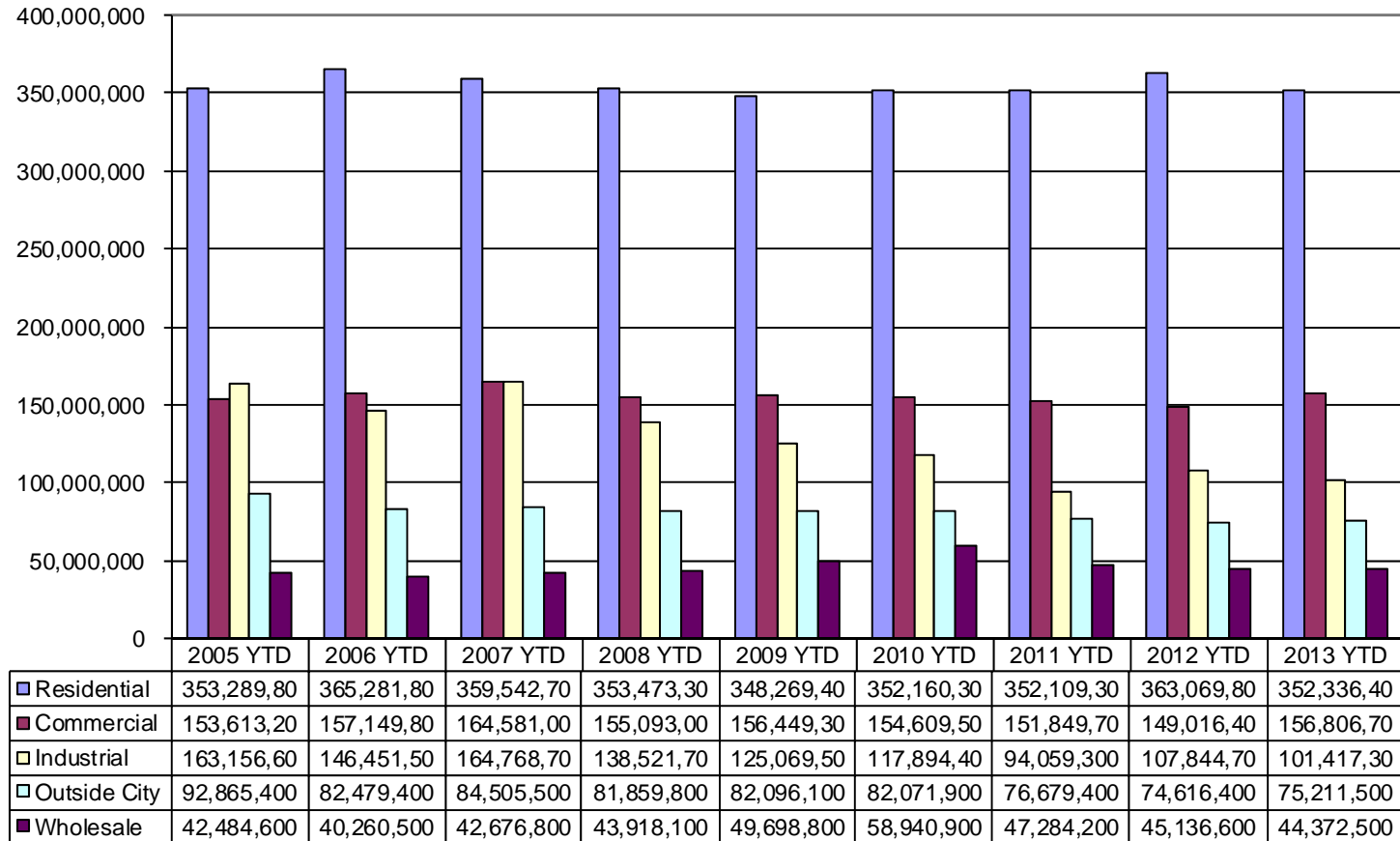


Number of Sewer Service Accounts



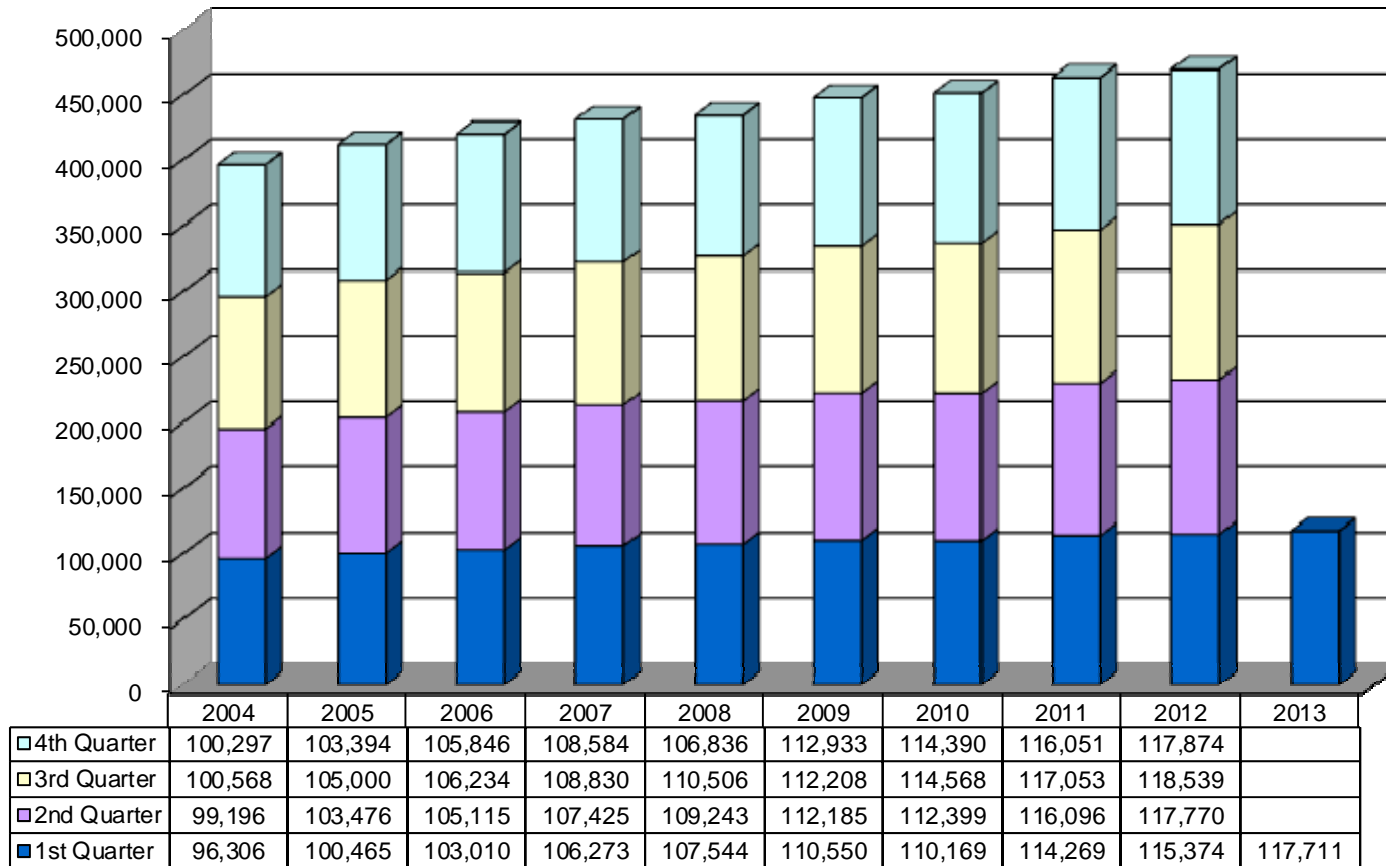
Comment: Water consumption for the first quarter of 2013 has increased slightly from the first quarter of 2012 due to modest increase in the customer base.

Water Consumption by Customer Type (In Gallons)



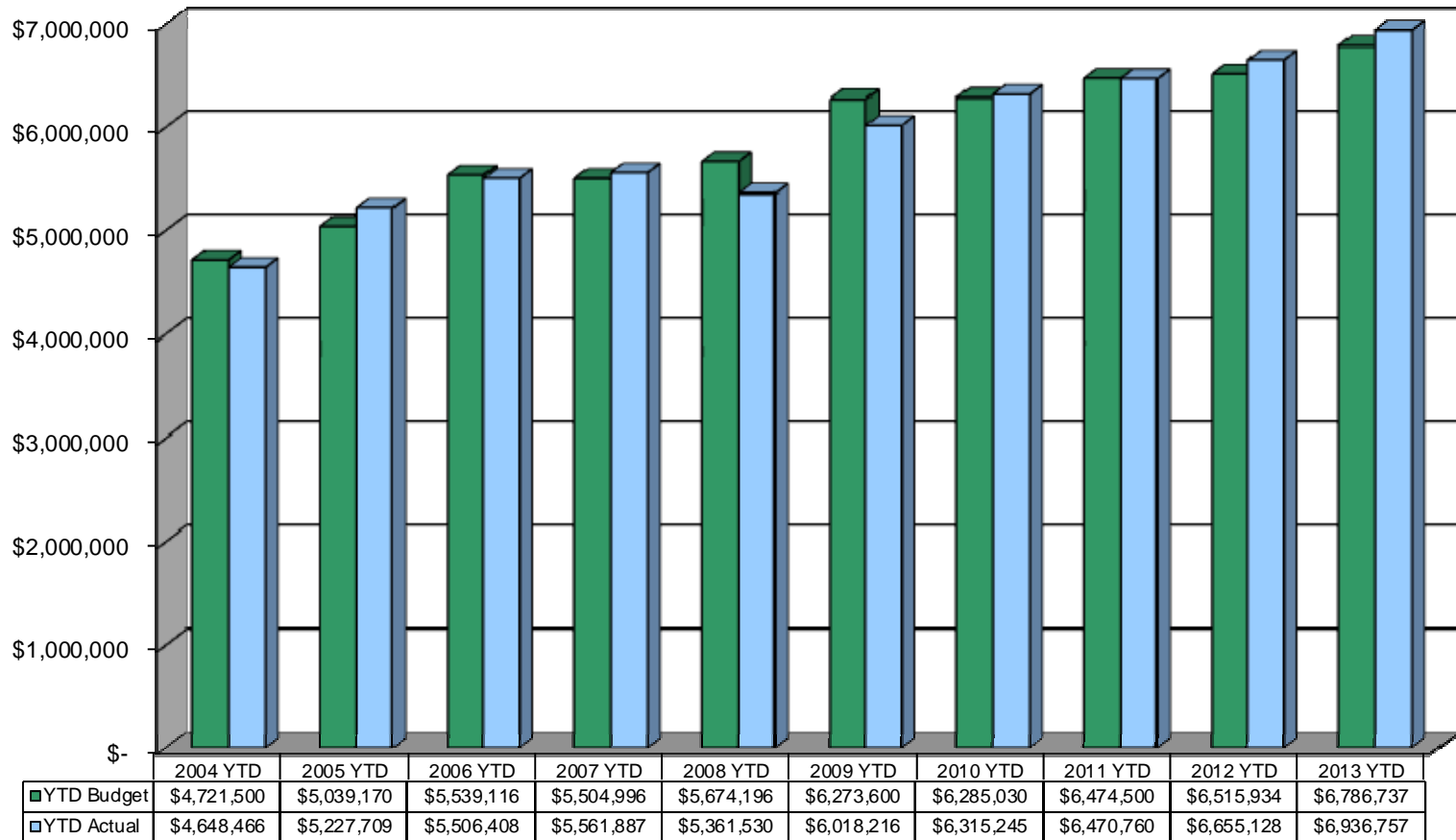
Comment: The first quarter of 2013 compared to the first quarter of 2012 indicates an increase in the amount of utility bills processed due to a modest increase in the customer base.

Number of Water & Sewer Utility Bills Processed



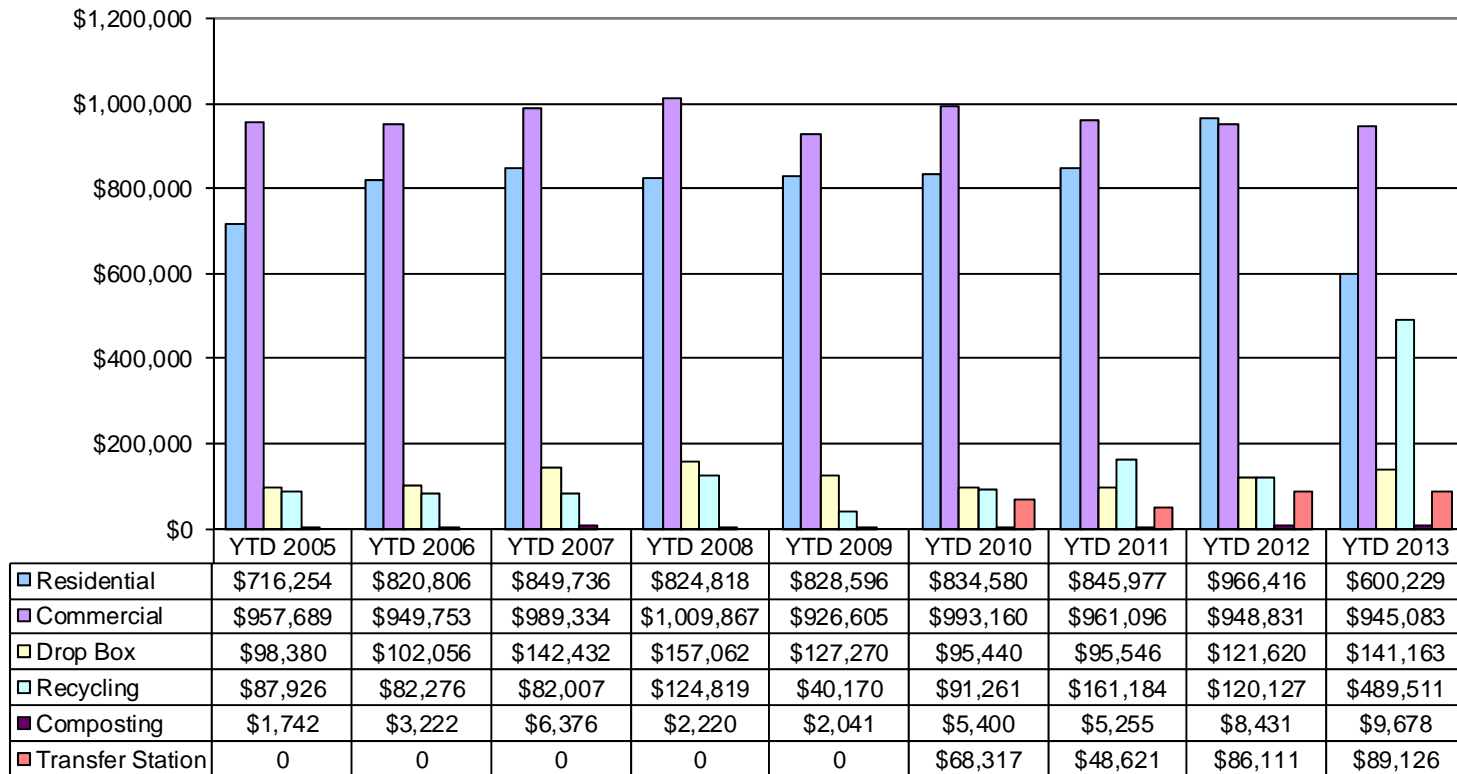
Comment: Revenue increases for the first quarter of 2013 are the result of the rate increases that were put into effect January 1, 2013.

Water & Sewer Billed Revenue Collected Budget Compared to Actual



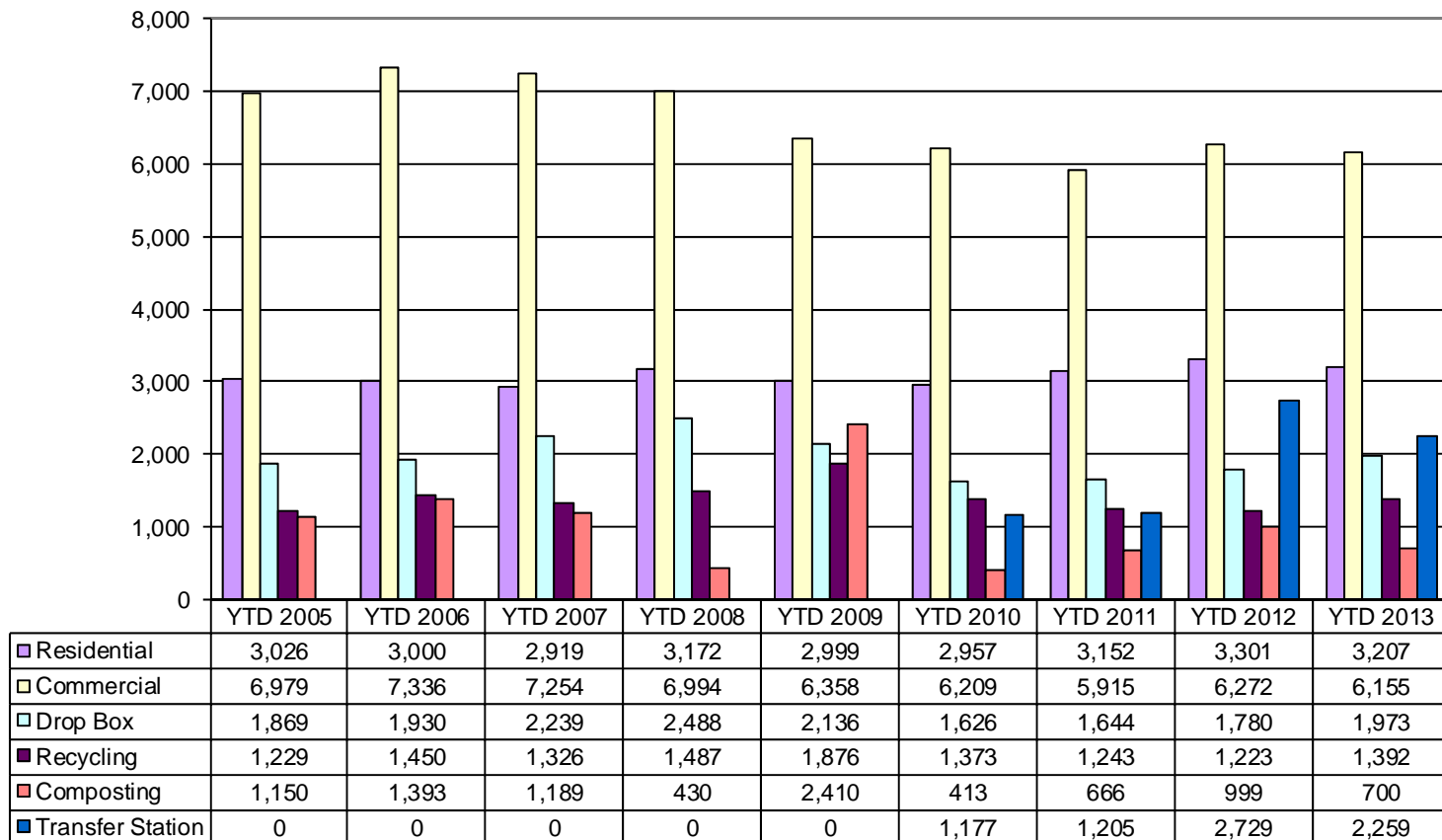
Comment: Recycling revenue now includes an allocation per household for services provided. This amount was previously shown in residential revenue. Cardboard revenue shows both commodity sales plus service fees from collection. Transfer Station rates were increased to the public in December 2012 due to an increase in the Waste Management contract for disposal class 1 municipal waste. Revenues for the first quarter needs to be verified with the final March income statement and are subject to change.

Solid Waste Program Revenues YTD First Quarter (In Dollars)



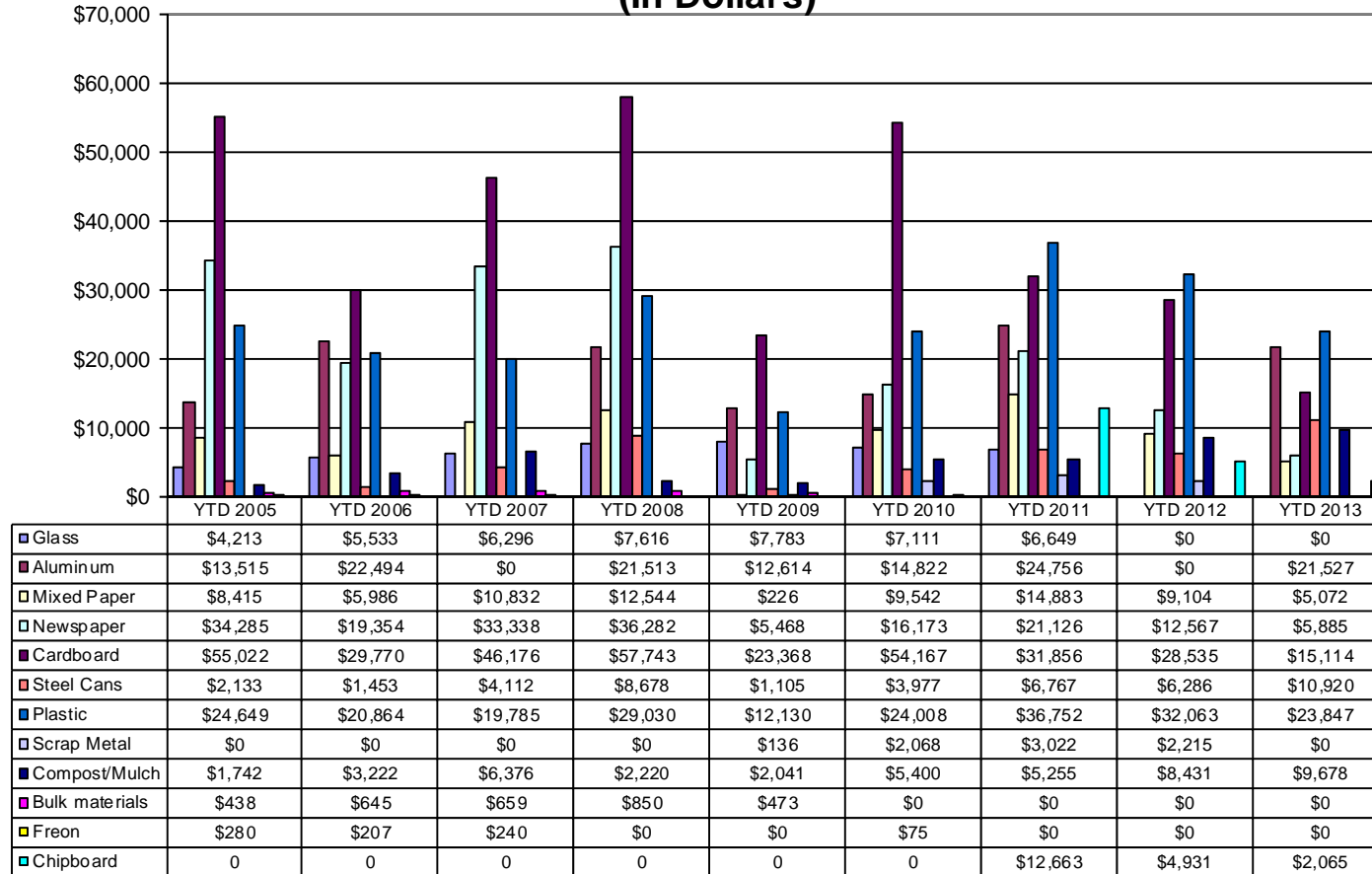
Comment: Recycling tonnage is reflective of materials sold through the first quarter. Drop box volumes rising due to more market share and improving economy. Transfer station numbers are higher due to increased use of the site by private haulers.

First Quarter Solid Waste Tonnage Collected by Program



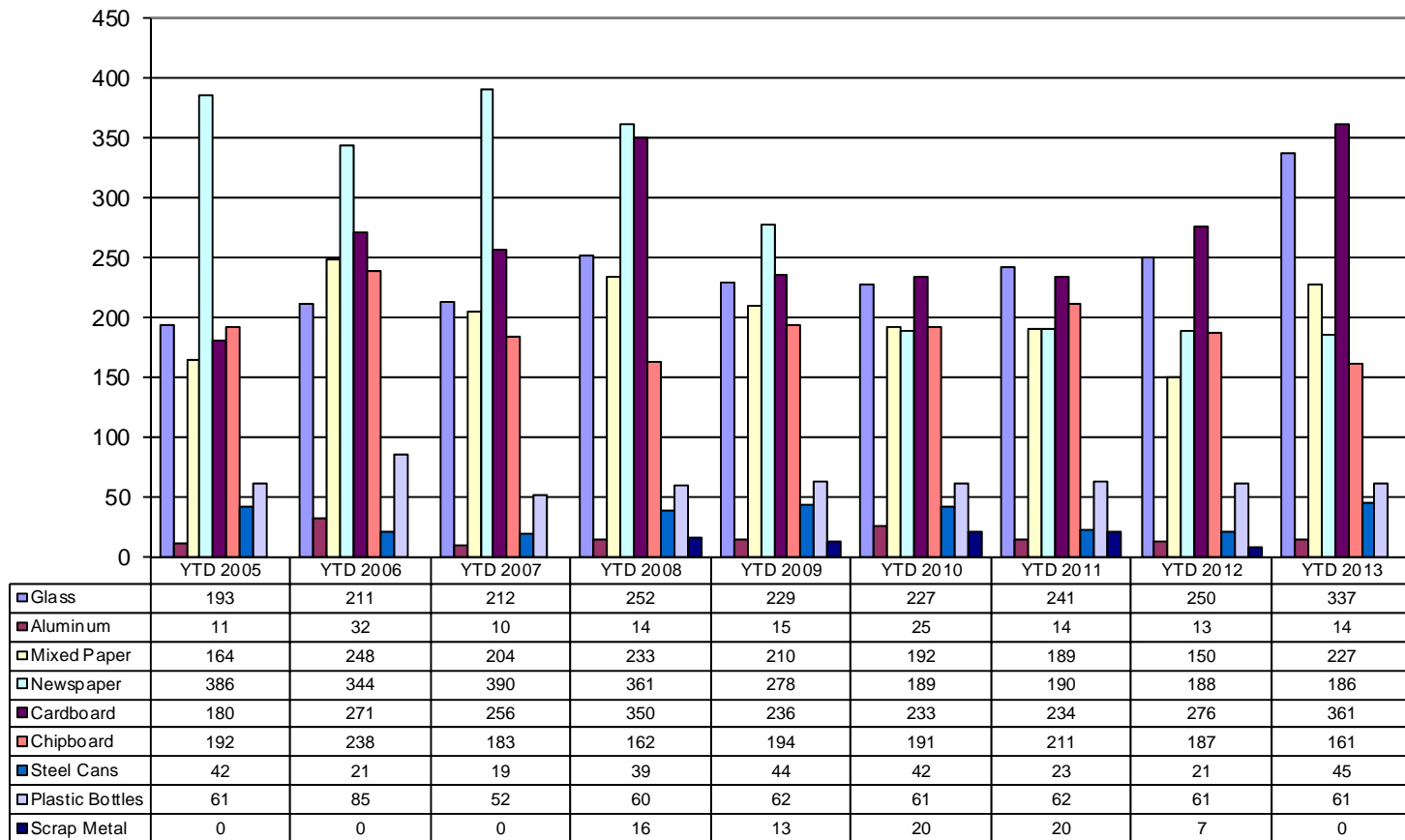
Comment: Fiber markets are still weak on pricing. High mill inventory and reduced demand dictate the market. Glass is now being sent to Ripple Glass and does not generate revenue or incur transportation expense. Commodity prices for materials are volatile and change monthly, sometimes weekly. First quarter revenue needs to be verified with the final March Income Statement and information is subject to change.

First Quarter Solid Waste Recycling Revenue by Product (In Dollars)



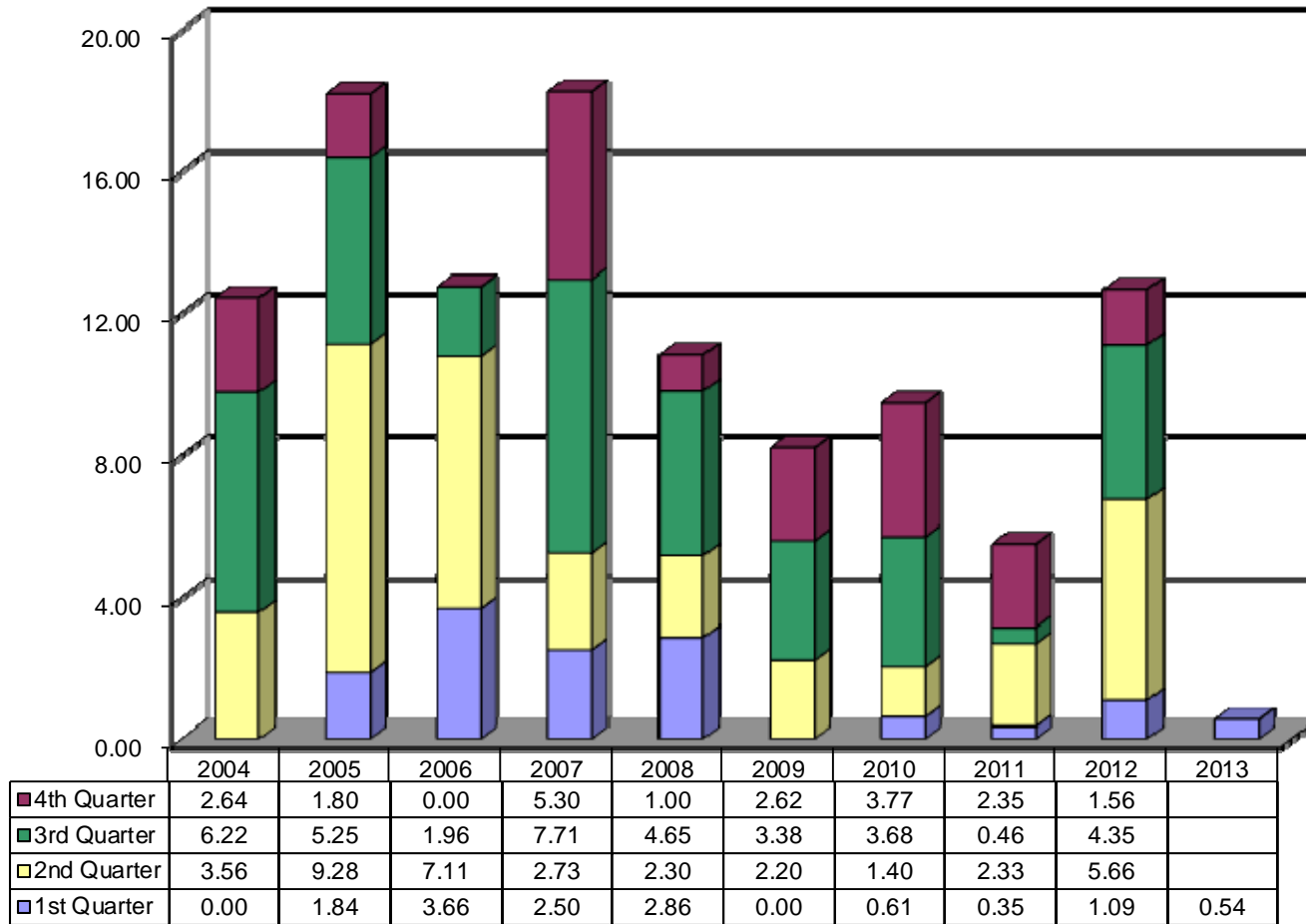
Comment: Mixed paper numbers are much higher and comparable to pre economic collapse generation. Newspaper volumes still very low compared to historical averages reflecting changing consumer habits. Glass is higher due to new commercial glass program. Fiber related commodities account for 67% of all materials collected.

Solid Waste Recycling Tonnage Sold by Product First Quarter



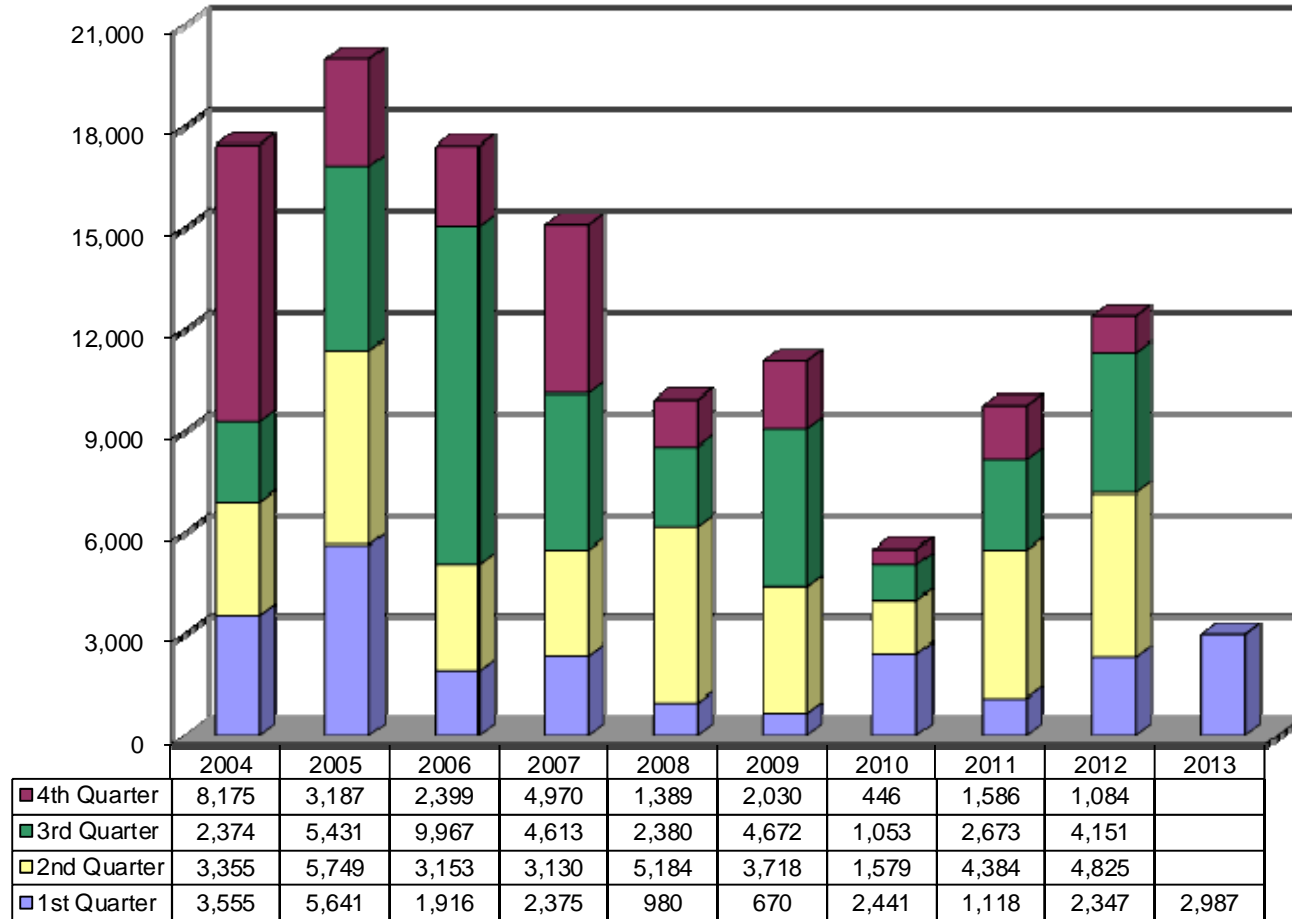
Comment: The asphalt crew sealed approximately seven miles of streets in preparation for microsurfacing which is scheduled to begin later in the year.

Asphalt Overlay - Miles Completed



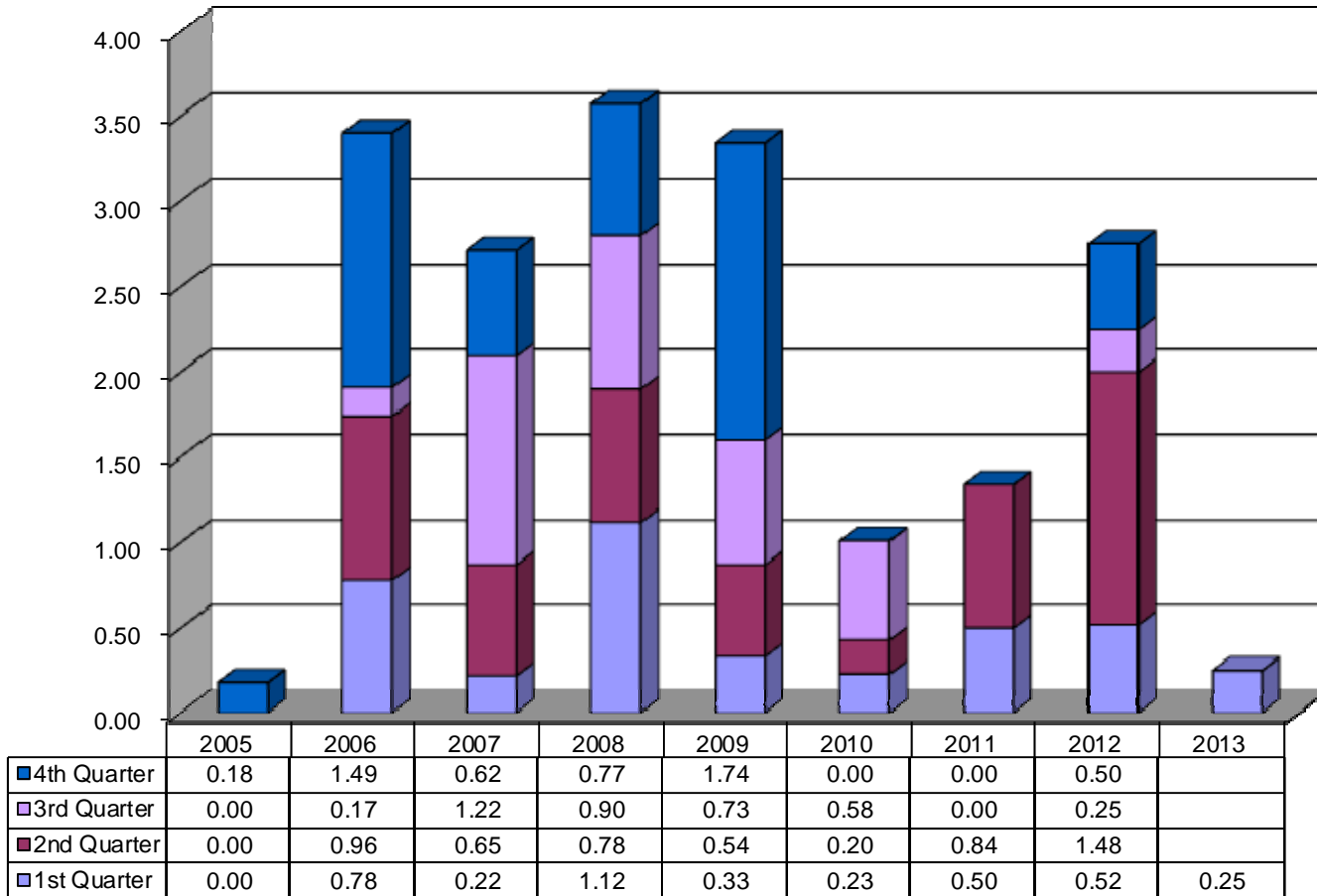
Comment: Sidewalks completed include Ash Street, Sycamore Street, Walnut Avenue, and Azalea Terrace.

Sidewalk Construction - Linear Feet Completed



Comment: Construction of a one (1) mile section along the south side of Lake Fayetteville is complete.

Trails Constructed or in Progress



Transportation Bond Street Improvements (LTD)
March 31, 2013

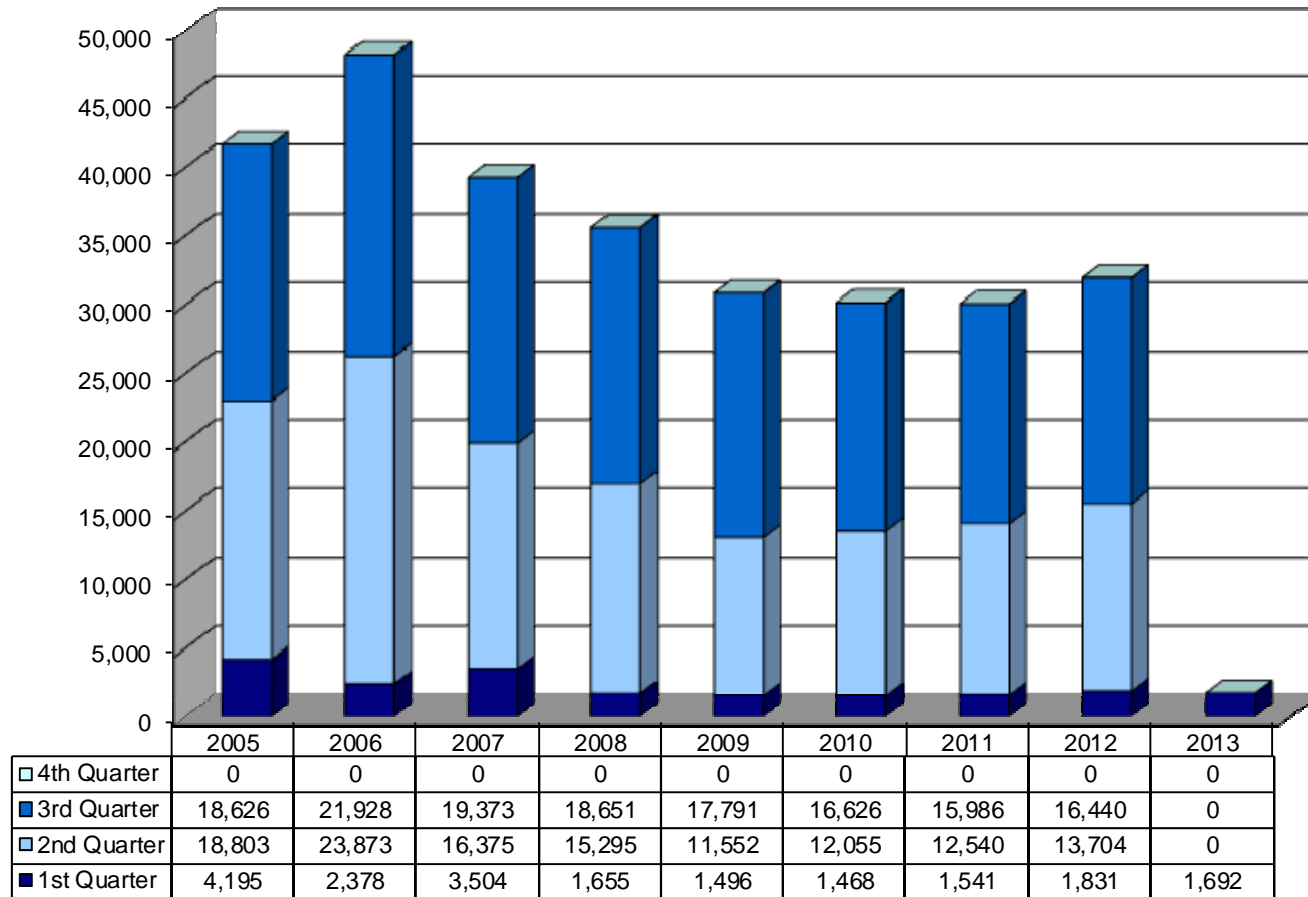
* Phase I: Oct 2006 - Sept 2009

* Phase II: Oct 2009 - Jan 2014

Sub Projects	LTD BUDGET							Encumbrs	Remaining Budget
	Sales Tax	*Phase I Trans Bonds	*Phase II Trans Bonds	Water/ Sewer	Total Budget	Expenses			
Active Projects:									
1-Transportation Bond Street Improvements	-	34,257	-	-	34,257	8,394	-	25,863	
1101-Lafayette & Maple Bridges	-	9,423	-	-	9,423	1,852	-	7,571	
1200-Cato Springs Rd.(S.School to Razorback)	2,039,845	56,351	464,574	-	2,560,770	95,071	2,167,397	298,302	
1300-Garland (Shiloh to Howard Nickell)	-	88,750	-	-	88,750	-	88,749	1	
1500-Mount Comfort (Rupple to Alpine)	-	91	-	-	91	-	-	91	
1600-Mount Comfort Road Improvements	-	21,679	-	-	21,679	-	21,679	-	
1700-Fayetteville Expressway EconomicCorridor	677,567	38,608	775,074	-	1,491,249	65,926	740,533	684,790	
1710-Roundabout Construction	760,125	70,574	-	-	830,699	174,499	659,877	(3,677)	
1720-Fulbright Exp/Hwy 71 Flyover	5,043,063	-	1,725,766	-	6,768,829	202,208	6,201,012	365,609	
2000-Crossover (Mission to City Limits)	-	-	379,467	-	379,467	-	-	379,467	
2250-Garland (North to Melmar) W/S Relocate	5,355	-	-	153,103	158,458	(25,734)	58,751	125,441	
2300-Highway 16 (Armstrong to Stonebridge)	-	-	18,191	-	18,191	-	-	18,191	
2350-Huntsville W/S Relocations	-	14,824	475,176	208,706	698,706	375,217	319,422	4,067	
2400-Rupple Road (MLK to Persimmon)	-	38,953	-	-	38,953	11,903	-	27,050	
2500-Van Asche (Garland to Gregg)	-	36,075	-	-	36,075	24,146	6,607	5,322	
Grand Total	8,525,955	409,585	3,838,248	361,809	13,135,597	933,480	10,264,028	1,938,089	

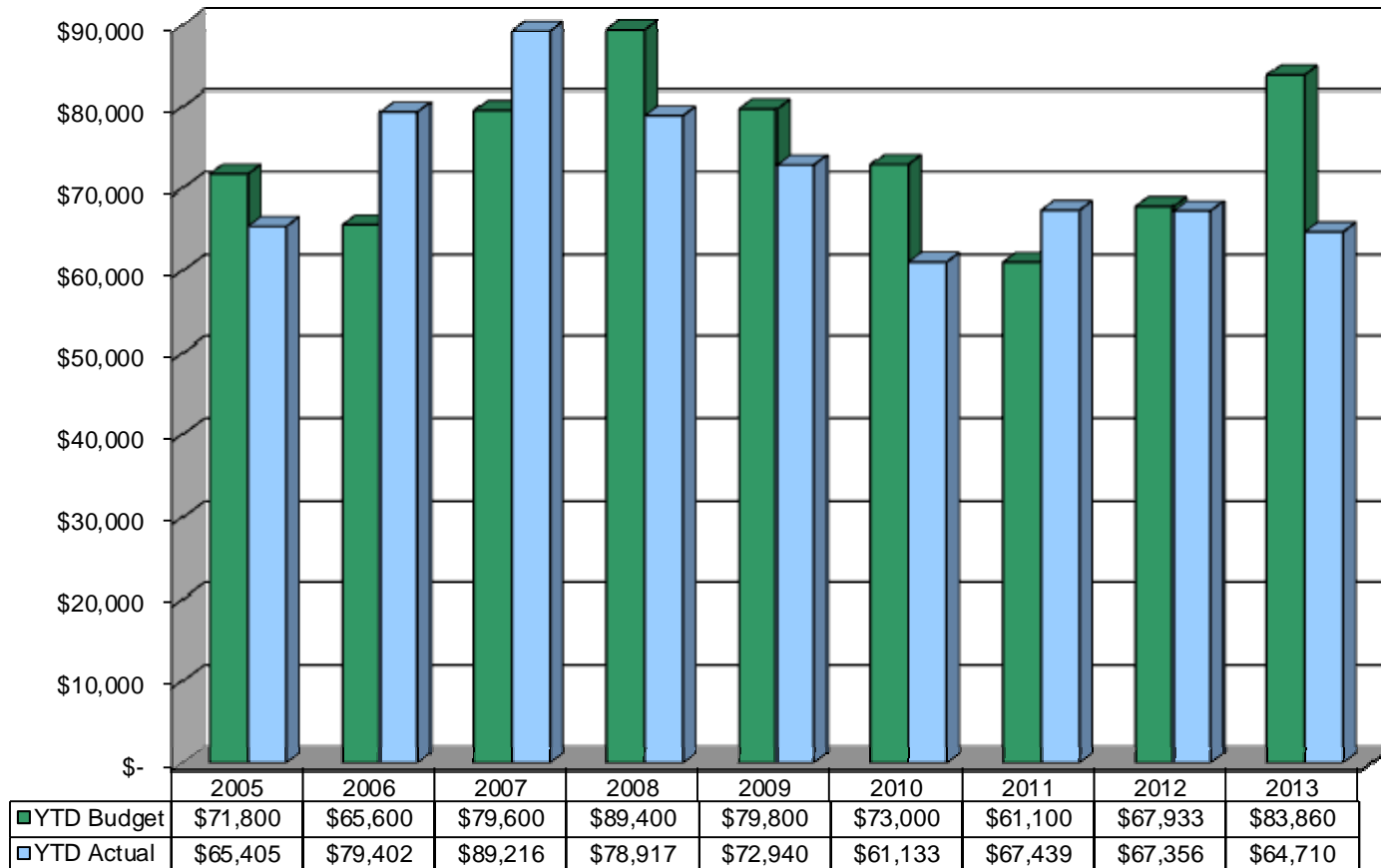
Comment: Recreation program revenues are lower than expected for first quarter of 2013, with the majority of the shortfall due to formation of a competitive softball league by the FHS booster club. This resulted in an estimated 140 fewer participants for the softball program.

Number of Parks & Recreation Program Participants



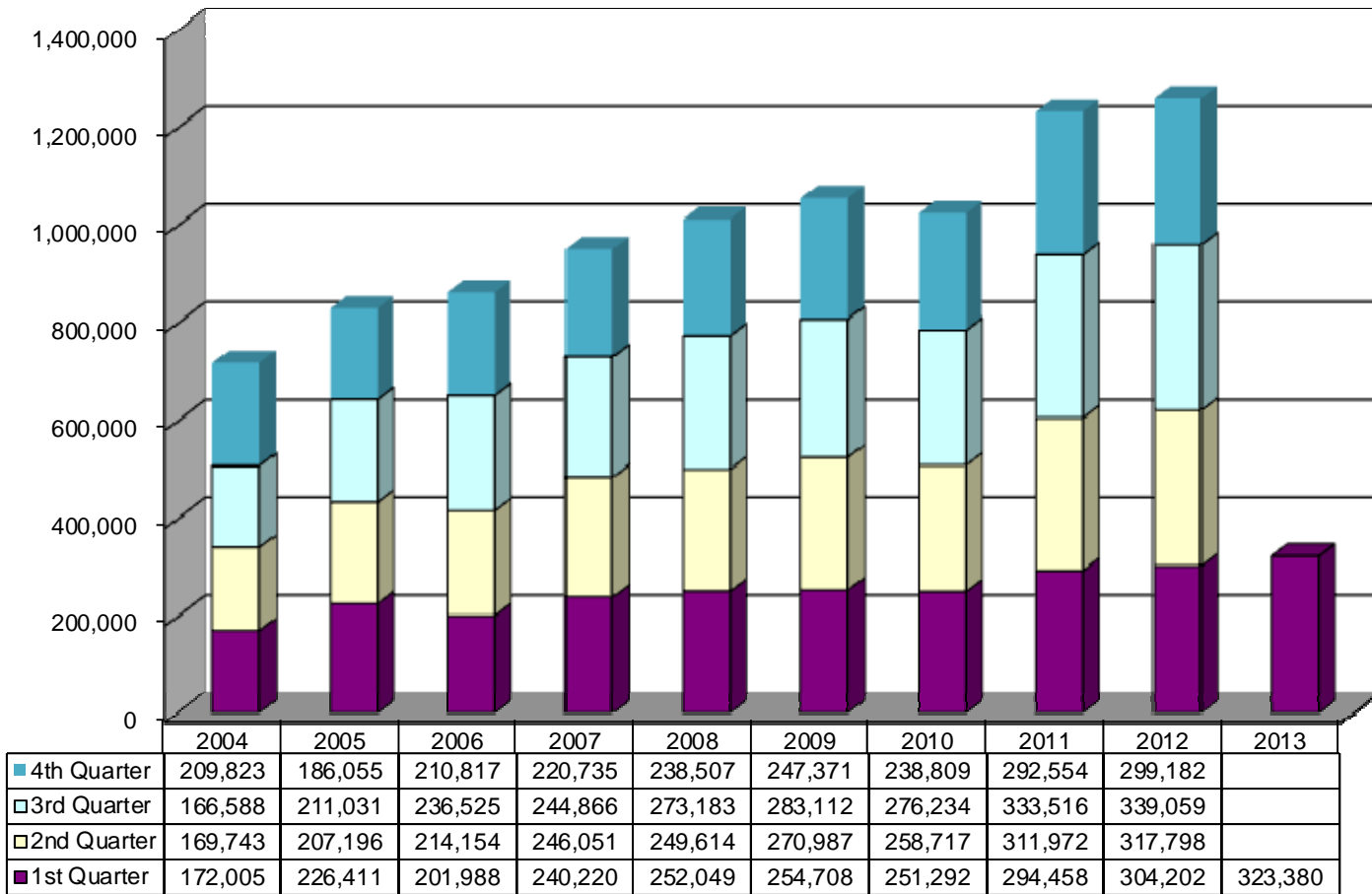
Comment: Recreation program revenues are lower than expected for the first quarter of 2013, with the majority of the shortfall due to formation of a competitive softball league by the FHS booster club. This resulted in over \$11,000 of estimated lost registration fees and team sponsorships for the softball program.

Parks & Recreation Program Revenue Year-to-Date



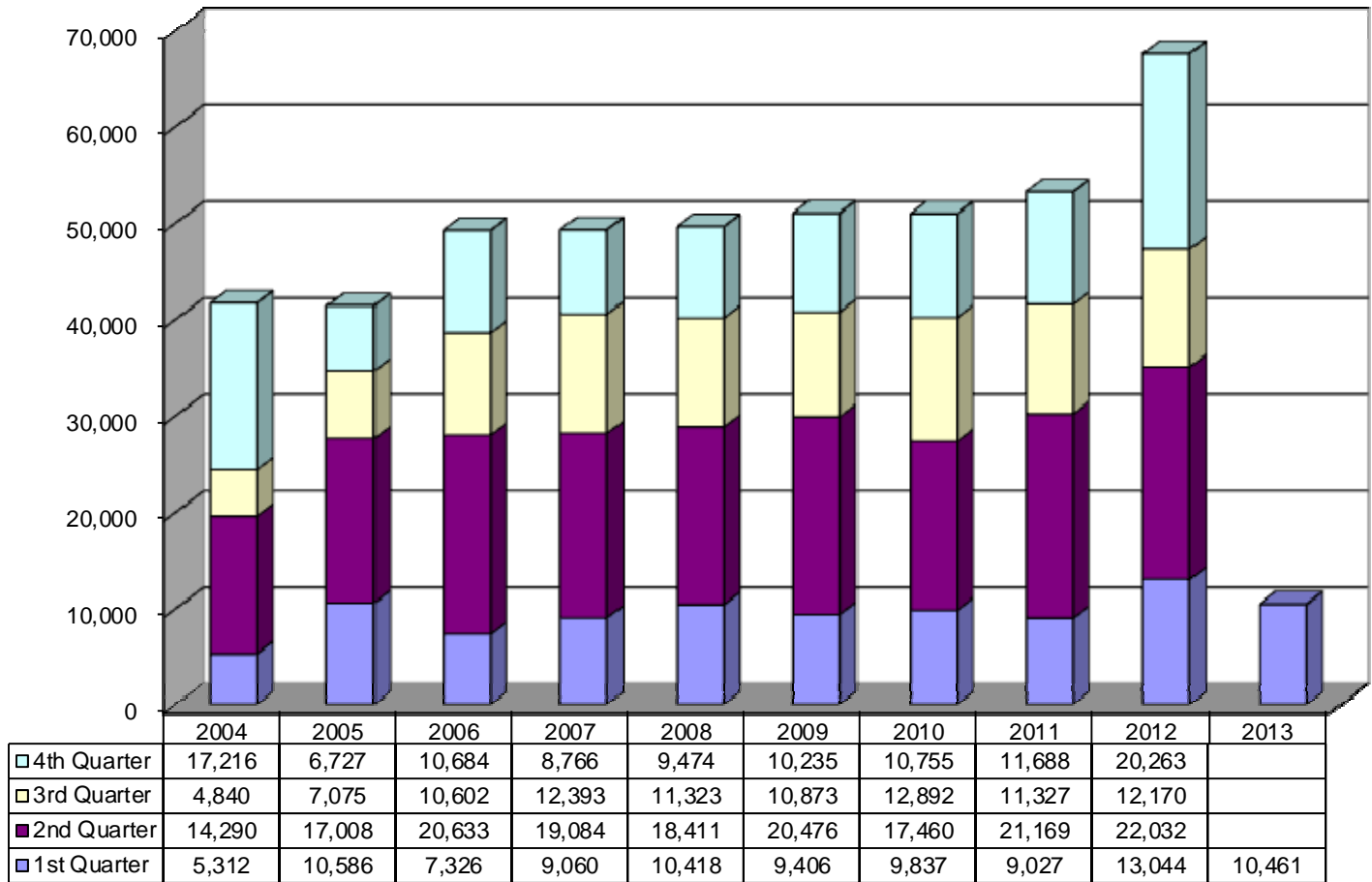
Comment: Total library check outs are up 6.3% and digital check-outs are up 61.7% over the same period last year.

Library Check Outs



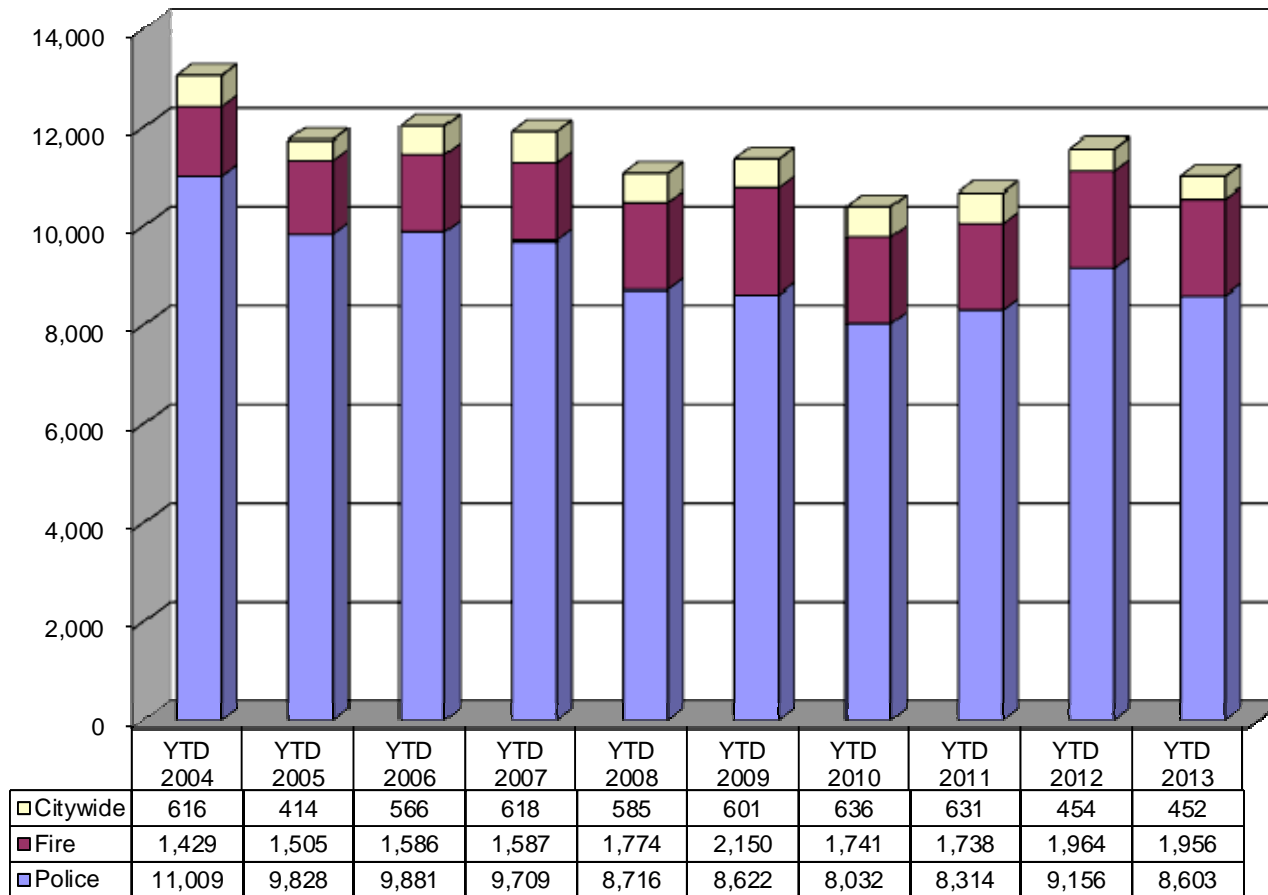
Comment: First quarter attendance is down 19.8% from 2012. Last year's programming included a Newbery Award winning author and extensive Sit, Stay, Read! Programming.

Library Program Attendees



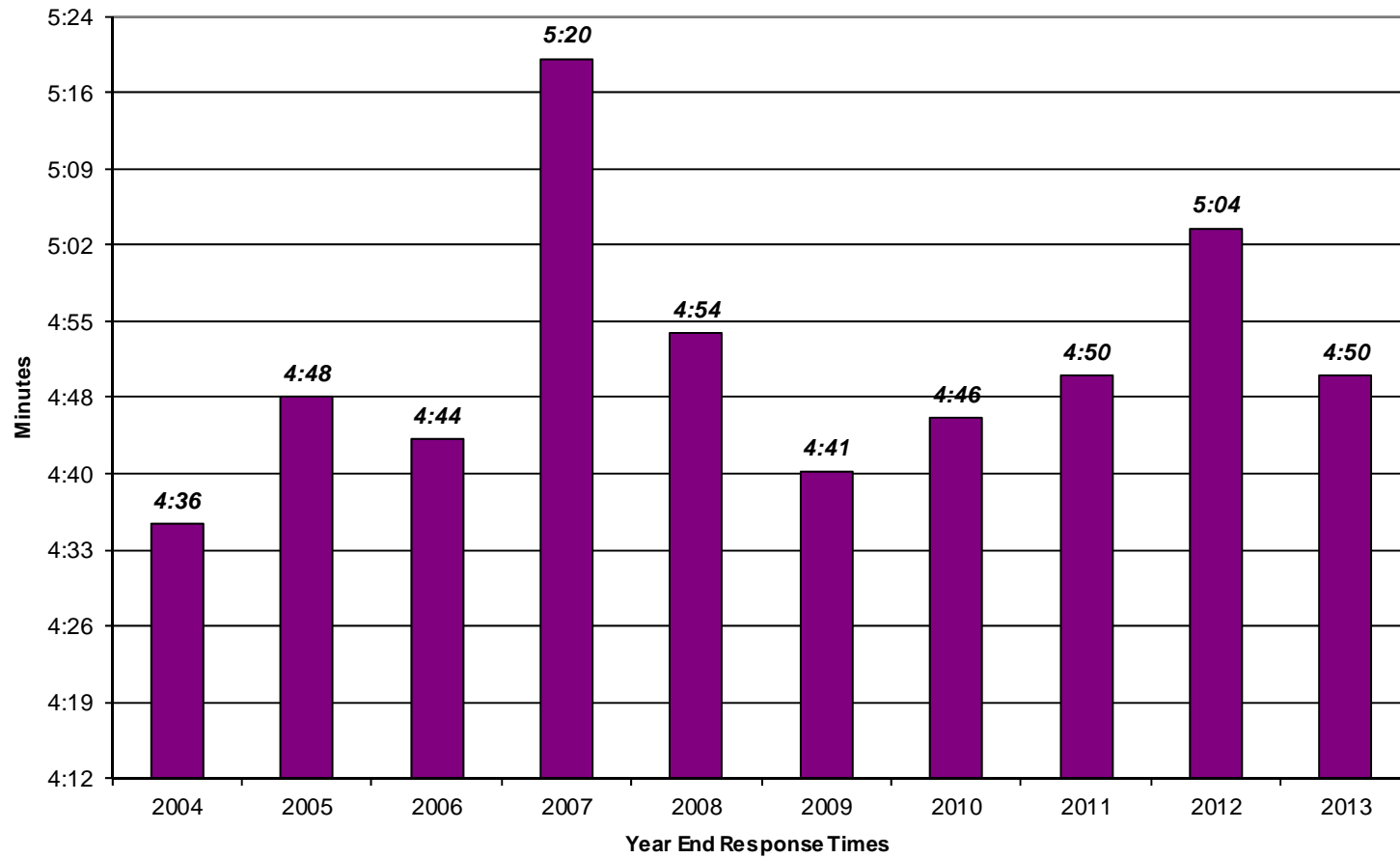
Comment: Police Priority 2 calls increased by 2% this quarter.

Central Dispatch Calls for Service



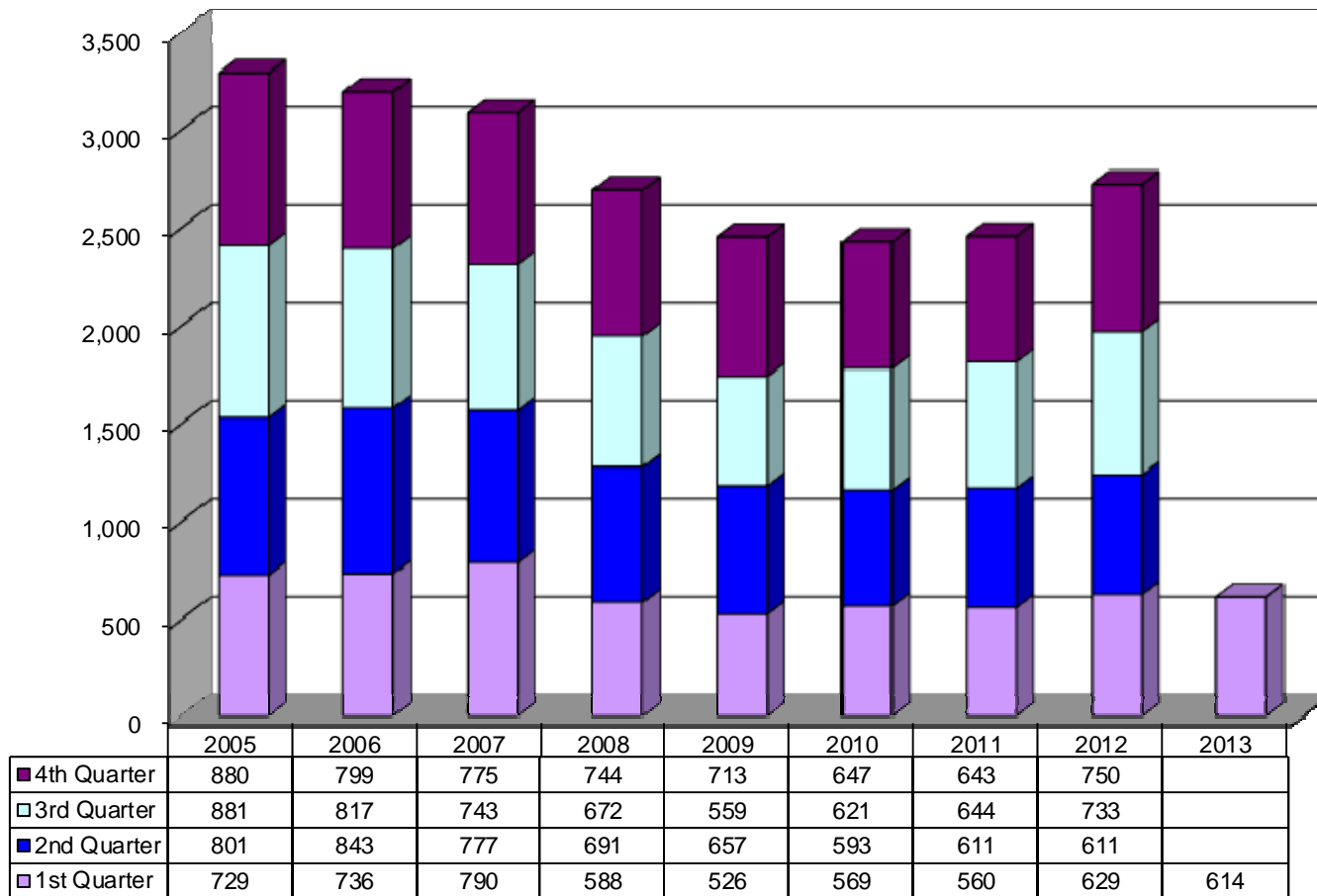
Comment: Response time to priority one calls decreased fourteen seconds compared to 2012.

Police Emergency Response



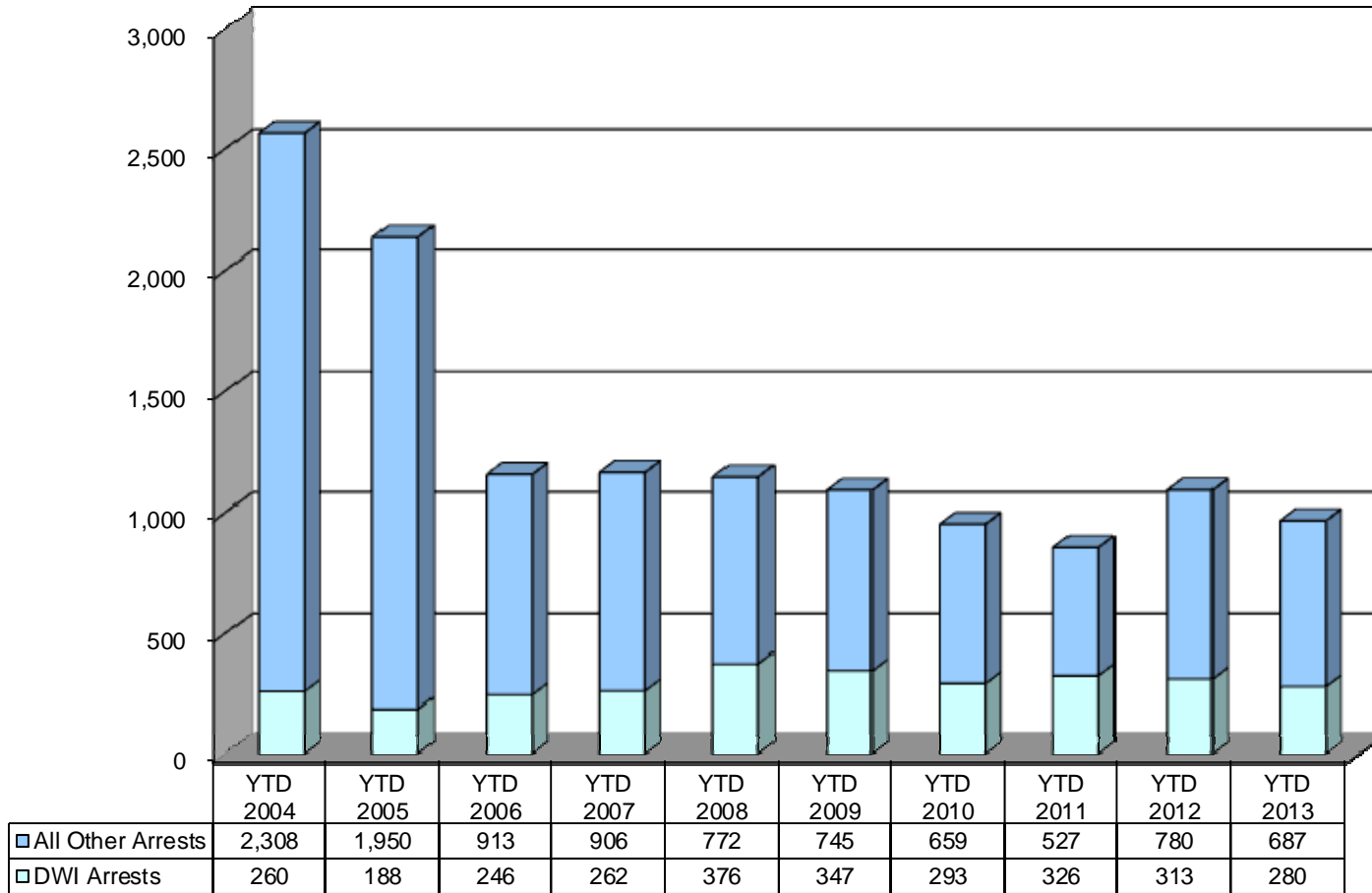
Comment: Accidents were down by 2.38% for year-to-date in 2013. There are many factors affecting these numbers, including but not limited to, traffic enforcement, weather, amount of traffic, and road construction.

Traffic Accidents Worked by Police



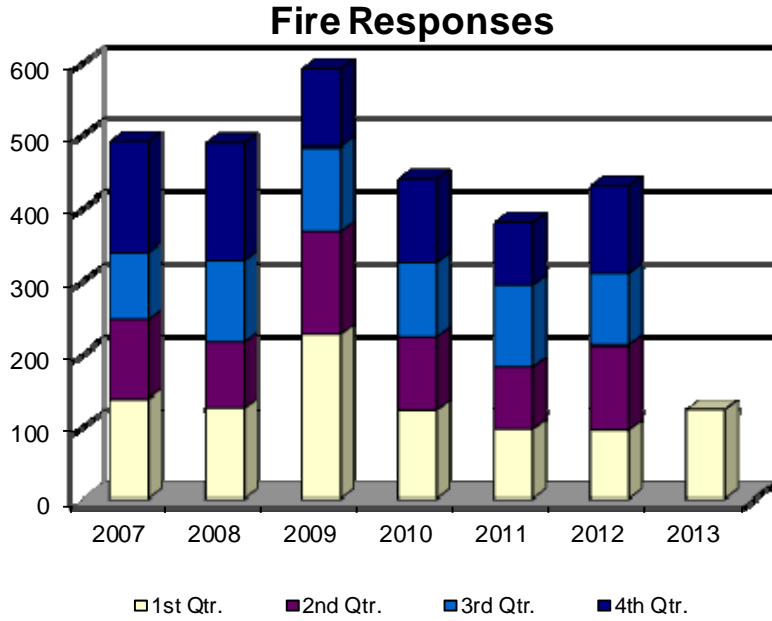
Comment: DWI arrests are down 10.54% and all other arrests are down 11.92% for year-to-date 2013. This decrease can be attributed in part to the 15% decrease in Priority 1 Calls for Service.

Police Custodial Arrests

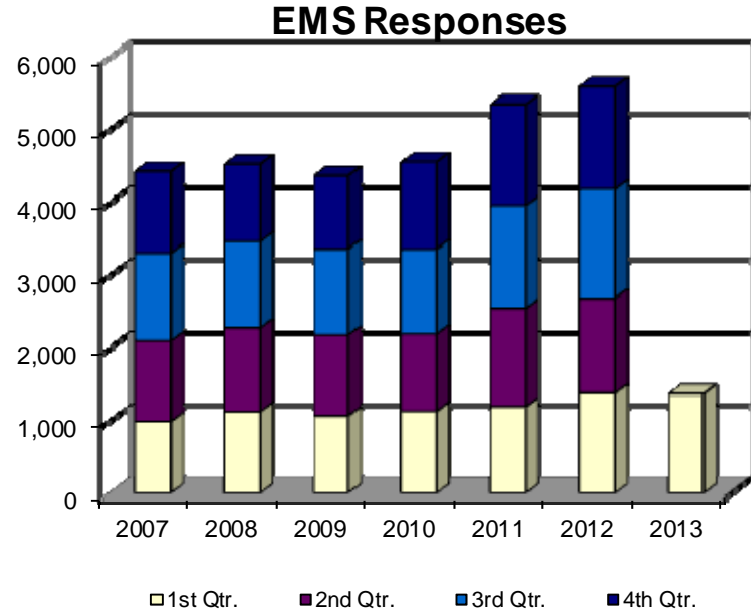


Comment: Fire responses are back up to 2010 levels. EMS response remains relatively even with the record numbers of 2012.

Fire Department Annual Calls for Service



Fire Responses				
Year	1st Qtr.	2nd Qtr.	3rd Qtr.	4th Qtr.
2007	138	109	92	151
2008	126	89	113	160
2009	226	141	116	108
2010	123	99	103	114
2011	96	86	111	87
2012	95	116	99	119
2013	124			

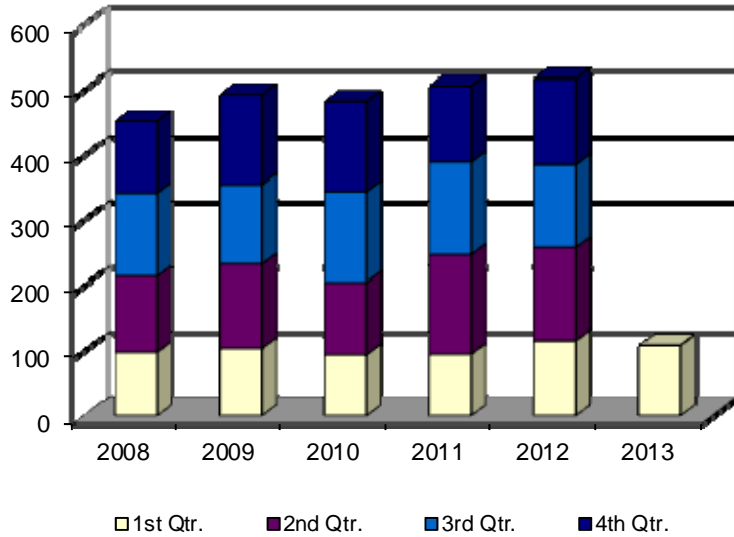


EMS Responses				
Year	1st Qtr.	2nd Qtr.	3rd Qtr.	4th Qtr.
2007	986	1,103	1,214	1,125
2008	1,124	1,148	1,188	1,069
2009	1,065	1,108	1,188	1,006
2010	1,130	1,056	1,173	1,203
2011	1,195	1,350	1,415	1,386
2012	1,375	1,309	1,495	1,410
2013	1,367			

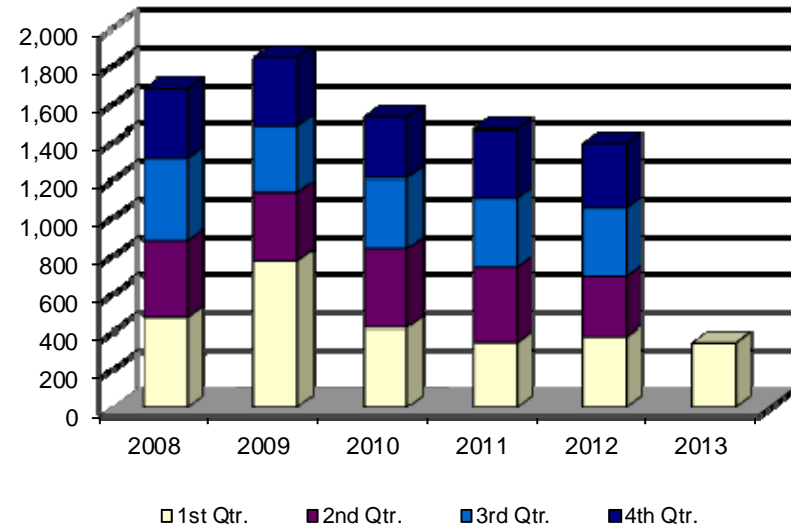
Comment: The number of rescue responses remain high, although not at the 2012 level. Other responses are also down from 2012 levels.

Fire Department Annual Calls for Service

Rescue Responses



Other Responses



Rescue Responses

Year	1st Qtr.	2nd Qtr.	3rd Qtr.	4th Qtr.
2008	98	116	128	109
2009	104	129	122	138
2010	94	111	139	138
2011	95	153	141	117
2012	116	143	126	132
2013	109			

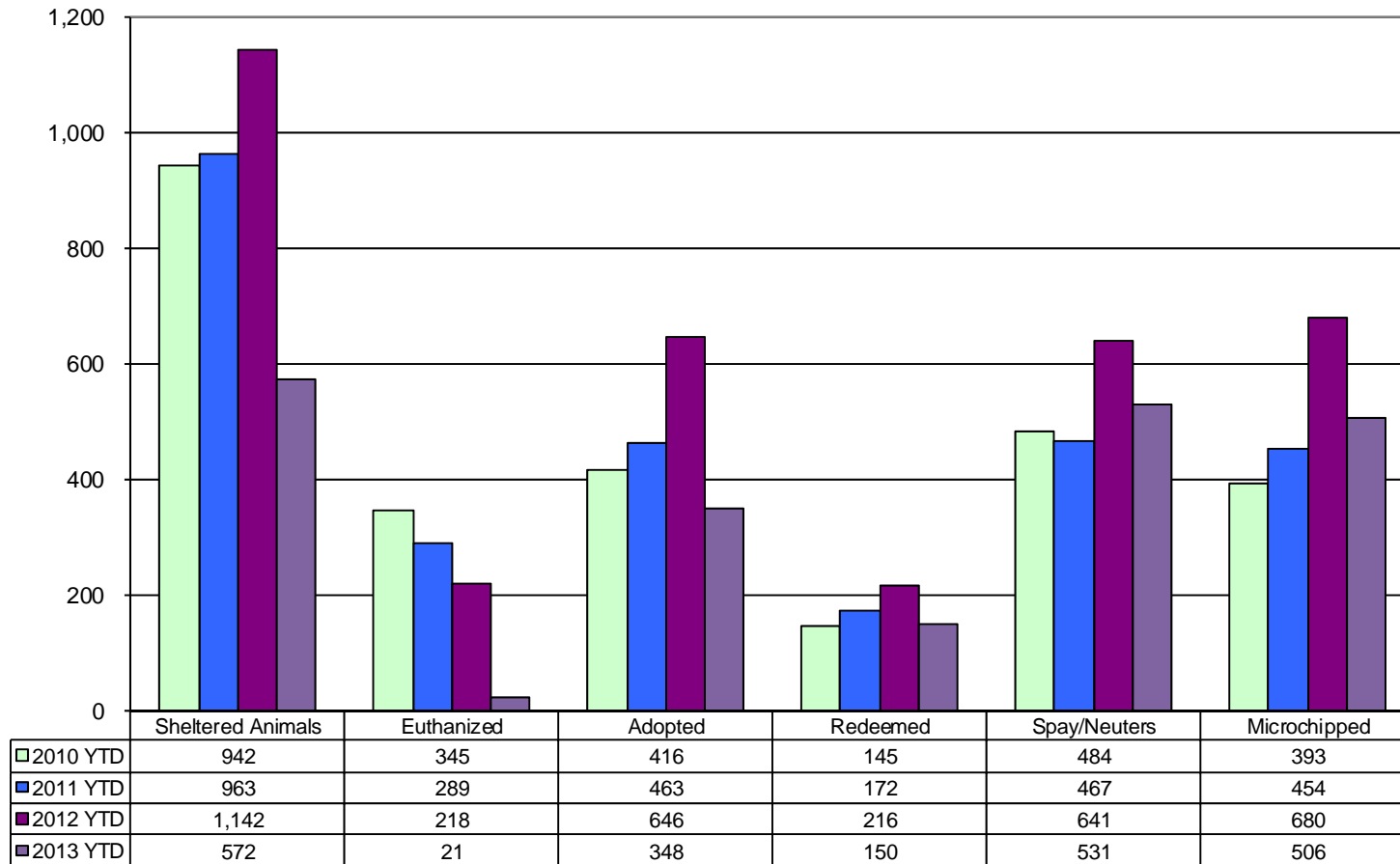
Other Responses*

Year	1st Qtr.	2nd Qtr.	3rd Qtr.	4th Qtr.
2008	472	408	430	370
2009	770	363	343	366
2010	420	418	369	321
2011	343	393	367	361
2012	374	311	366	340
2013	341			

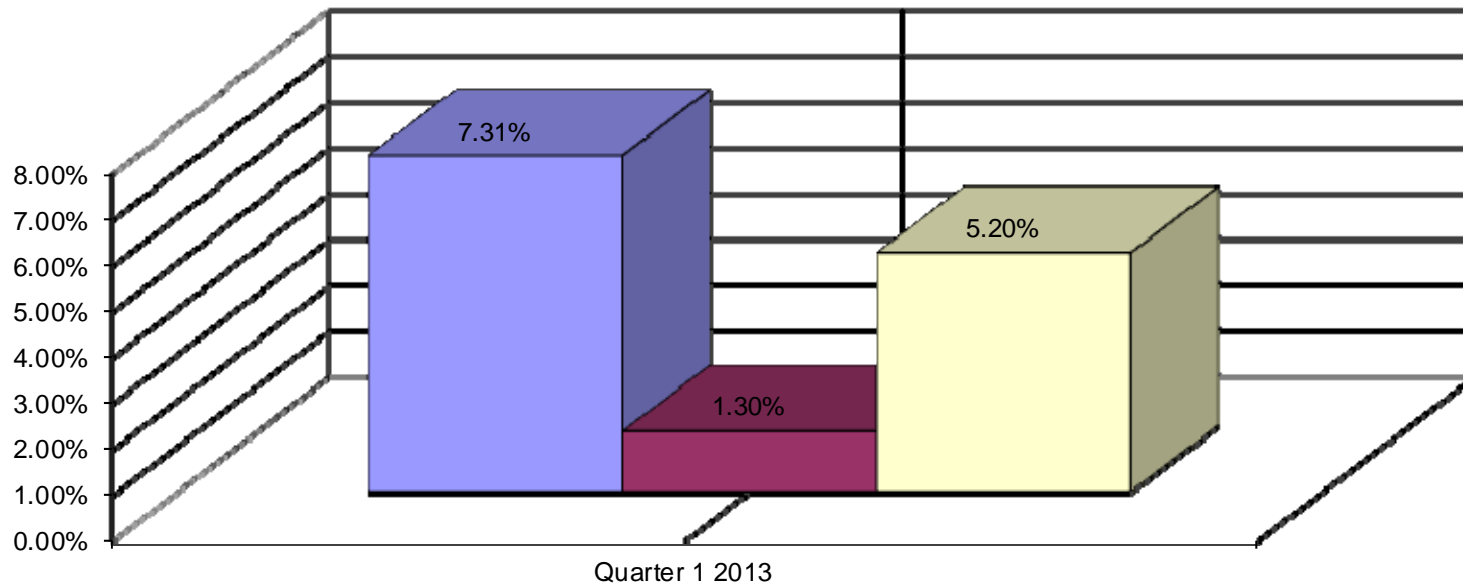
*Other responses consist of services calls, unknown substances, smoke in the area, smoke checks, vehicle accidents with no injury or entrapment, burning complaints, non-reportable haz-mats, or to assist a person.

Comment: This is a breakdown of the animals that enter the shelter system and their ultimate disposition status.

Animal Services Population Details Year-To-Date



Comment: Voluntary turnover of regular, full time employees at the City remains low.

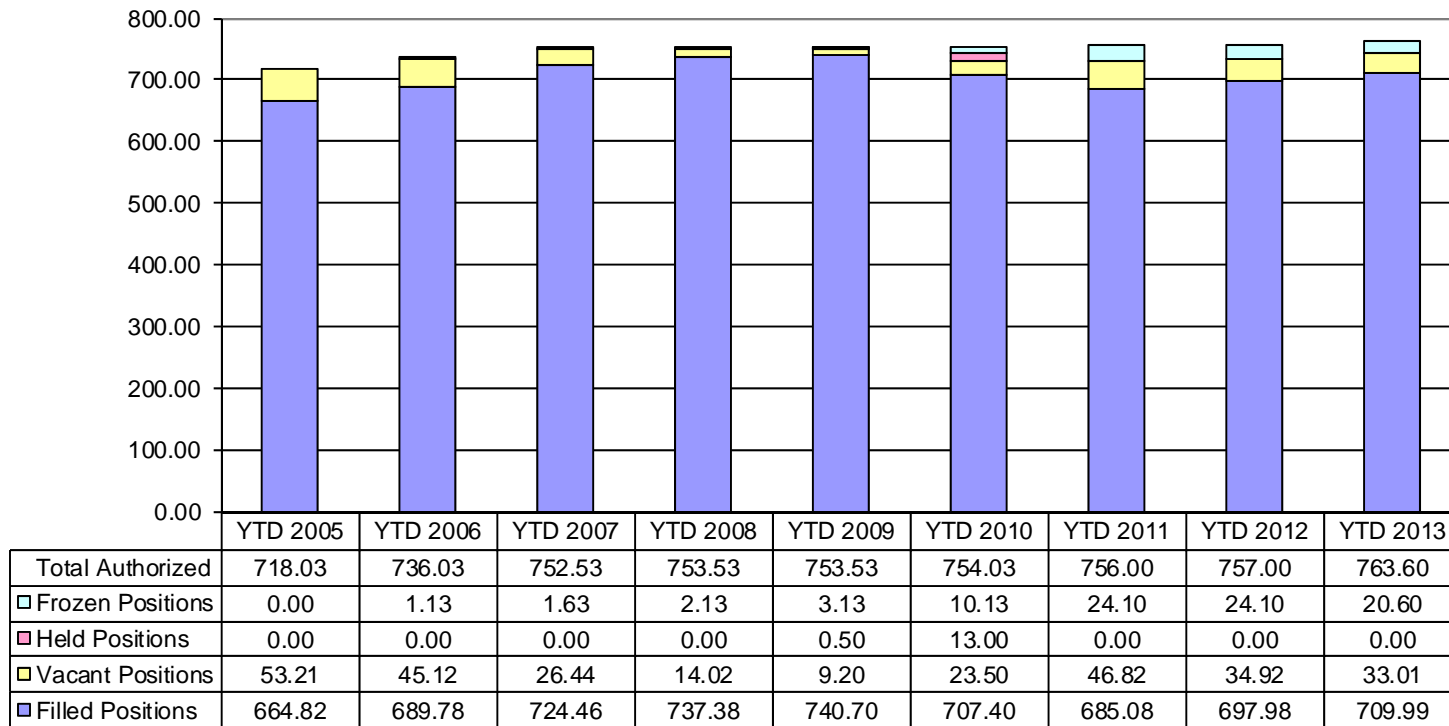


■ PAST: 12 month Lookback Average Turnover ■ PRESENT: 2013 Quarter 1 Turnover □ FUTURE: 12 month Projected Turnover

Projected Future numbers, by definition, assume constant numbers. They do not take into account random headcount fluctuations that oftentimes occur. the projected numbers may therefore appear inflated.

Comment: 20.6 FTE's continue to be frozen. The number of current vacancies are about the same as last year.

Number of Authorized Employee Positions Compared to Positions Filled (Expressed in FTE's)



Due to 29.00 FTE's being added in the 2005 Adopted Budget, the vacant positions number would be higher than normal because of the hiring timeframe.

Budget Amendment Report - First Quarter 2013

Heading Definitions:

FUND: Funding Source

DESCRIPTION: Budget Amendment Number and Description

ADOPTED BUDGET: Original Adopted Expense Budget

RE-BUDGETS: Re-appropriations from the previous fiscal year.

REVENUES: Budget Amendments that are funded from a source of funds other than Fund Balance.

FUND BALANCE: Budget Amendments coming from Fund Balance.

AMENDED BUDGET: Amended Expense Budget

Summary by Funding Source

FUND	ADOPTED BUDGET	RE-BUDGETS	REVENUES	FUND BALANCE	AMENDED BUDGET
1010 General	36,057,000	1,043,833	78,626	1,036,850	38,216,309
2100 Street	4,708,000	97,188	-	129,000	4,934,188
2130 Parking	1,162,000	20,654	-	723,338	1,905,992
2180 Community Development Block Grant	541,000	696,826	1,260	1,371	1,240,457
2240 Energy Block Grant	-	6,560	-	-	6,560
2250 Parks Development	3,074,000	4,245,808	-	30,000	7,349,808
2300 Impact Fee	1,060,000	2,972,368	-	-	4,032,368
2930 Drug Law Enforcement	568,000	91,098	115,608	1,300	776,006
3370 TIF Bond	100,000	-	-	-	100,000
3380 Parking Deck Bond	-	-	316,338	-	316,338
3440 Sales Tax Bond	17,871,000	-	-	-	17,871,000
4270 Replacement & Disaster Recovery	42,000	407,070	-	-	449,070
4470 Sales Tax Capital Improvements	8,253,000	16,076,349	124,600	-	24,453,949
4480 Wastewater System Improvements Project	1,520,000	-	-	-	1,520,000
4520 Sales Tax Construction Bond	7,000	4,247,833	4,296	-	4,259,129
4560 Parking Deck Project	-	-	6,200,000	-	6,200,000
5400 Water & Sewer	34,920,000	11,244,411	-	49,000	46,213,411
5500 Solid Waste	11,774,000	1,564,038	25,000	83,000	13,446,038
5550 Airport	955,000	422,920	1,815,016	(15,964)	3,176,972
5600 Town Center	697,000	-	-	-	697,000
6800 Police Pension	1,629,000	-	-	-	1,629,000
6810 Fire Pension	1,468,000	-	-	-	1,468,000
9700 Shop	8,486,000	3,456,084	101,100	223,800	12,266,984
Grand Total	134,892,000	46,593,040	8,781,844	2,261,695	192,528,579

Budget Amendment Report - First Quarter 2013 (Detail)

FUND	ADOPTED BUDGET	RE-BUDGETS	REVENUES	FUND BALANCE	AMENDED BUDGET
1010 General					
00 - ADOPTED BUDGET	36,057,000	-	-	-	36,057,000
01 - RE-APPROPRIATIONS	-	1,043,833	-	-	1,043,833
13-034 - ASPCA Grant/Donations	-	-	18,626	-	18,626
13-068 - Employee Compensation	-	-	-	1,000,000	1,000,000
13-072 - 13 St Crime Enf/Pros	-	-	60,000	-	60,000
13-076 - Planning Commission Pd	-	-	-	36,850	36,850
1010 General Total	36,057,000	1,043,833	78,626	1,036,850	38,216,309
2100 Street					
00 - ADOPTED BUDGET	4,708,000	-	-	-	4,708,000
01 - RE-APPROPRIATIONS	-	97,188	-	-	97,188
13-068 - Employee Compensation	-	-	-	129,000	129,000
2100 Street Total	4,708,000	97,188	-	129,000	4,934,188
2130 Parking					
00 - ADOPTED BUDGET	1,162,000	-	-	-	1,162,000
01 - RE-APPROPRIATIONS	-	20,654	-	-	20,654
13-001 - Parking Deck Project	-	-	-	400,000	400,000
13-005 - Park Deck Debt Service	-	-	-	316,338	316,338
13-068 - Employee Compensation	-	-	-	7,000	7,000
2130 Parking Total	1,162,000	20,654	-	723,338	1,905,992

Budget Amendment Report - First Quarter 2013 (Detail)

FUND	ADOPTED BUDGET	RE-BUDGETS	REVENUES	FUND BALANCE	AMENDED BUDGET
2180 Community Development Block Grant					
00 - ADOPTED BUDGET	541,000	-	-	-	541,000
01 - RE-APPROPRIATIONS	-	696,826	-	-	696,826
13-048 - Comm Outreach/Ranger	-	-	1,260	1,371	2,631
2180 Community Development Block Grant Total	541,000	696,826	1,260	1,371	1,240,457
2240 Energy Block Grant					
01 - RE-APPROPRIATIONS	-	6,560	-	-	6,560
2240 Energy Block Grant Total	-	6,560	-	-	6,560
2250 Parks Development					
00 - ADOPTED BUDGET	3,074,000	-	-	-	3,074,000
01 - RE-APPROPRIATIONS	-	4,245,808	-	-	4,245,808
13-068 - Employee Compensation	-	-	-	30,000	30,000
2250 Parks Development Total	3,074,000	4,245,808	-	30,000	7,349,808
2300 Impact Fee					
00 - ADOPTED BUDGET	1,060,000	-	-	-	1,060,000
01 - RE-APPROPRIATIONS	-	2,972,368	-	-	2,972,368
2300 Impact Fee Total	1,060,000	2,972,368	-	-	4,032,368
2930 Drug Law Enforcement					
00 - ADOPTED BUDGET	568,000	-	-	-	568,000
01 - RE-APPROPRIATIONS	-	91,098	-	-	91,098
13-033 - HIDTA	-	-	115,608	-	115,608
13-068 - Employee Compensation	-	-	-	1,300	1,300
2930 Drug Law Enforcement Total	568,000	91,098	115,608	1,300	776,006
3370 TIF Bond					
00 - ADOPTED BUDGET	100,000	-	-	-	100,000
3370 TIF Bond Total	100,000	-	-	-	100,000

Budget Amendment Report - First Quarter 2013 (Detail)

FUND	ADOPTED BUDGET	RE-BUDGETS	REVENUES	FUND BALANCE	AMENDED BUDGET
3380 Parking Deck Bond					
13-005 - Park Deck Debt Service	-	-	316,338	-	316,338
3380 Parking Deck Bond Total	-	-	316,338	-	316,338
3440 Sales Tax Bond					
00 - ADOPTED BUDGET	17,871,000	-	-	-	17,871,000
3440 Sales Tax Bond Total	17,871,000	-	-	-	17,871,000
4270 Replacement & Disaster Recovery					
00 - ADOPTED BUDGET	42,000	-	-	-	42,000
01 - RE-APPROPRIATIONS	-	407,070	-	-	407,070
4270 Replacement & Disaster Recovery Total	42,000	407,070	-	-	449,070
4470 Sales Tax Capital Improvements					
00 - ADOPTED BUDGET	8,253,000	-	-	-	8,253,000
01 - RE-APPROPRIATIONS	-	16,076,349	-	-	16,076,349
13-074 - Mountain/College Side	-	-	60,600	-	60,600
13-077 - Sunbridge Villa Ct/Shr	-	-	64,000	-	64,000
4470 Sales Tax Capital Improvements Total	8,253,000	16,076,349	124,600	-	24,453,949
4480 Wastewater System Improvements Project					
00 - ADOPTED BUDGET	1,520,000	-	-	-	1,520,000
4480 Wastewater System Improvements Project Total	1,520,000	-	-	-	1,520,000

Budget Amendment Report - First Quarter 2013 (Detail)

FUND	ADOPTED BUDGET	RE-BUDGETS	REVENUES	FUND BALANCE	AMENDED BUDGET
4520 Sales Tax Construction Bond					
00 - ADOPTED BUDGET	7,000	-	-	-	7,000
01 - RE-APPROPRIATIONS	-	4,247,833	-	-	4,247,833
13-069 - Unappropriated Money	-	-	4,296	-	4,296
4520 Sales Tax Construction Bond Total	7,000	4,247,833	4,296	-	4,259,129
4560 Parking Deck Project					
13-001 - Parking Deck Project	-	-	6,200,000	-	6,200,000
4560 Parking Deck Project Total	-	-	6,200,000	-	6,200,000
5400 Water & Sewer					
00 - ADOPTED BUDGET	34,920,000	-	-	-	34,920,000
01 - RE-APPROPRIATIONS	-	11,244,411	-	-	11,244,411
13-068 - Employee Compensation	-	-	-	49,000	49,000
5400 Water & Sewer Total	34,920,000	11,244,411	-	49,000	46,213,411
5500 Solid Waste					
00 - ADOPTED BUDGET	11,774,000	-	-	-	11,774,000
01 - RE-APPROPRIATIONS	-	1,564,038	-	-	1,564,038
13-035 - E-Waste Grant	-	-	25,000	-	25,000
13-068 - Employee Compensation	-	-	-	83,000	83,000
5500 Solid Waste Total	11,774,000	1,564,038	25,000	83,000	13,446,038
5550 Airport					
00 - ADOPTED BUDGET	955,000	-	-	-	955,000
01 - RE-APPROPRIATIONS	-	422,920	-	-	422,920
13-036 - FBO Program	-	-	1,815,016	(28,564)	1,786,452
13-068 - Employee Compensation	-	-	-	12,600	12,600
5550 Airport Total	955,000	422,920	1,815,016	(15,964)	3,176,972

Budget Amendment Report - First Quarter 2013 (Detail)

FUND	ADOPTED BUDGET	RE-BUDGETS	REVENUES	FUND BALANCE	AMENDED BUDGET
5600 Town Center					
00 - ADOPTED BUDGET	697,000	-	-	-	697,000
5600 Town Center Total	697,000	-	-	-	697,000
6800 Police Pension					
00 - ADOPTED BUDGET	1,629,000	-	-	-	1,629,000
6800 Police Pension Total	1,629,000	-	-	-	1,629,000
6810 Fire Pension					
00 - ADOPTED BUDGET	1,468,000	-	-	-	1,468,000
6810 Fire Pension Total	1,468,000	-	-	-	1,468,000
9700 Shop					
00 - ADOPTED BUDGET	8,486,000	-	-	-	8,486,000
01 - RE-APPROPRIATIONS	-	3,456,084	-	-	3,456,084
13-010 - Unit 2161-HazMat Resp	-	-	73,600	-	73,600
13-011 - Purchase 3 Pickups	-	-	-	10,000	10,000
13-012 - Sludge Hauling Trailer	-	-	-	5,500	5,500
13-013 - Unit 5003 Round Baler	-	-	-	2,400	2,400
13-046 - Backhoe Replacements	-	-	-	130,400	130,400
13-047 - Unit 592 - Park Mower	-	-	-	13,900	13,900
13-068 - Employee Compensation	-	-	-	18,100	18,100
13-073 - Exp IT Unit 2168	-	-	27,500	-	27,500
13-075 - Message Board #9067	-	-	-	14,500	14,500
13-087 - Upgrade Unit 1127U	-	-	-	29,000	29,000
9700 Shop Total	8,486,000	3,456,084	101,100	223,800	12,266,984
Grand Total	134,892,000	46,593,040	8,781,844	2,261,695	192,528,579