

City of Fayetteville, Arkansas Second Quarter 2017 Management Report:

Elected Officials:

| | | | | |
|-----------------------------|----------------|---------------|--------------|----------------|
| Mayor | Lioneld Jordan | | | |
| City Attorney | Kit Williams | | | |
| City Clerk | Sondra Smith | | | |
| City Council Members | Adella Gray | Mark Kinion | John La Tour | Alan Long |
| | Sarah Marsh | Matthew Petty | Sarah Bunch | Justin Tennant |
| District Court Judge | William Storey | | | |

Executive Staff:

| | |
|-----------------|---|
| David Dayringer | Fire Chief |
| Don Marr | Chief of Staff |
| Greg Tabor | Police Chief |
| David Johnson | Executive Director, Fayetteville Public Library |

Senior Department Directors:

| | |
|------------------|-------------------------------------|
| Paul A. Becker | Chief Financial Officer |
| Connie Edmonston | Parks & Recreation Director |
| Terry Gulley | Transportation Services Director |
| Susan Norton | Communications & Marketing Director |
| Tim Nyander | Utilities Director |
| Vacant | Development Services Director |

Department Directors:

| | |
|--------------------|--------------------------------------|
| Peter Nierengarten | Sustainability & Resilience Director |
|--------------------|--------------------------------------|

Division Heads:

| | |
|----------------|---------------------------------------|
| Wade Abernathy | Facilities Maintenance Supervisor |
| Doug Bankston | Director of Media Services |
| Jesse Beeks | Fleet Operations Superintendent |
| Chris Brown | City Engineer |
| Justin Clay | Parking Manager |
| Jeff Coles | Recycling & Trash Collection Director |
| Steven Dotson | Internal Auditor |
| Yolanda Fields | Community Resources Director |
| Andrew Garner | City Planning Director |

Division Heads: (continued)

Marsha Hertweck
Keith Macedo
Cheryl Partain
Brenda Reed
Andrea Rennie
Mark Rogers
Kevin Springer
Dena Stockalper
Kathy Stocker
Brian Thomas
Mark Whitaker

Accounting Director
Information Technology Director
Utilities Financial Services Manager
Human Resources Director
Purchasing Manager
Water & Sewer Operations Manager
Budget Director
District Court Administrator
Dispatch Manager
City Prosecutor
Building Safety Director

CITY OF FAYETTEVILLE, ARKANSAS QUARTERLY MANAGEMENT REPORT

Second Quarter 2017

MAYOR

Lioneld Jordan

CITY COUNCIL

Adella Gray
Mark Kinion
Justin Tennant
John La Tour

Ward 1, Position 1
Ward 2, Position 1
Ward 3, Position 1
Ward 4, Position 1

Sarah Marsh
Matthew Petty
Sarah Bunch
Alan Long

Ward 1, Position 2
Ward 2, Position 2
Ward 3, Position 2
Ward 4, Position 2

ELECTED OFFICIALS

Kit Williams - City Attorney
Sondra Smith - City Clerk/Treasurer
William Storey - District Court Judge

SENIOR DEPARTMENT DIRECTORS / EXECUTIVE STAFF

Paul A. Becker - Chief Financial Officer
Connie Edmonston - Parks & Recreation Director
Tim Nyander - Utilities Director
Vacant - Development Services Director
Greg Tabor - Police Chief

David Dayringer - Fire Chief
Terry Gulley - Transportation Services Director
Don Marr - Chief of Staff
Susan Norton - Communications & Marketing Director

2017 SECOND QUARTER -- TABLE OF CONTENTS

| | | |
|-------|---|-------|
| I. | SPECIAL EVENT STATISTICS | 1 |
| II. | FINANCE | |
| | City Sales Tax | 2 |
| | City's Portion of the County Sales Tax | 3 |
| | Franchise Fees | 4 |
| | Parks Development HMR Tax | 5 |
| | State Turnback – General and Street Funds | 6-7 |
| | Impact Fees | 8 |
| | District Court Activity | 9-10 |
| III. | BUILDING RELATED ACTIVITIES | |
| | Building Permits | 11 |
| | Building Permit Fees Collected | 12 |
| | Code Compliance Service Requests | 13 |
| | Dwelling Units Approved | 14 |
| | Non Residential Square Footage Approved | 15 |
| IV. | ENTERPRISE ACTIVITIES | |
| | Airport..... | 16-17 |
| | Water & Sewer | 18-23 |
| | Recycling & Trash Collection | 24-27 |
| V. | TRANSPORTATION & RECREATION | |
| | Street Operations | 28-29 |
| | Trails | 30 |
| | Transportation Bond Program | 31 |
| | Parks & Recreation | 32-33 |
| | Library | 34-35 |
| VI. | PUBLIC SAFETY | |
| | Police | 36-39 |
| | Fire | 40-41 |
| | Animal Services | 42 |
| VII. | INTERNAL ACTIVITIES | |
| | Human Resources | 43-44 |
| VIII. | BUDGET ADMENDMENTS | |
| | Summary by Funding Source..... | 45 |
| | Detail by Fund | 46-49 |

Special Events which affect the City:

The level of economic activity in the City has continued to grow in the second quarter of 2017. Sales taxes are up a combined total of 4.36% compared to last year. Building permit applications have also decreased as expected but are \$200,000 over the amount budgeted at the end of the second quarter.

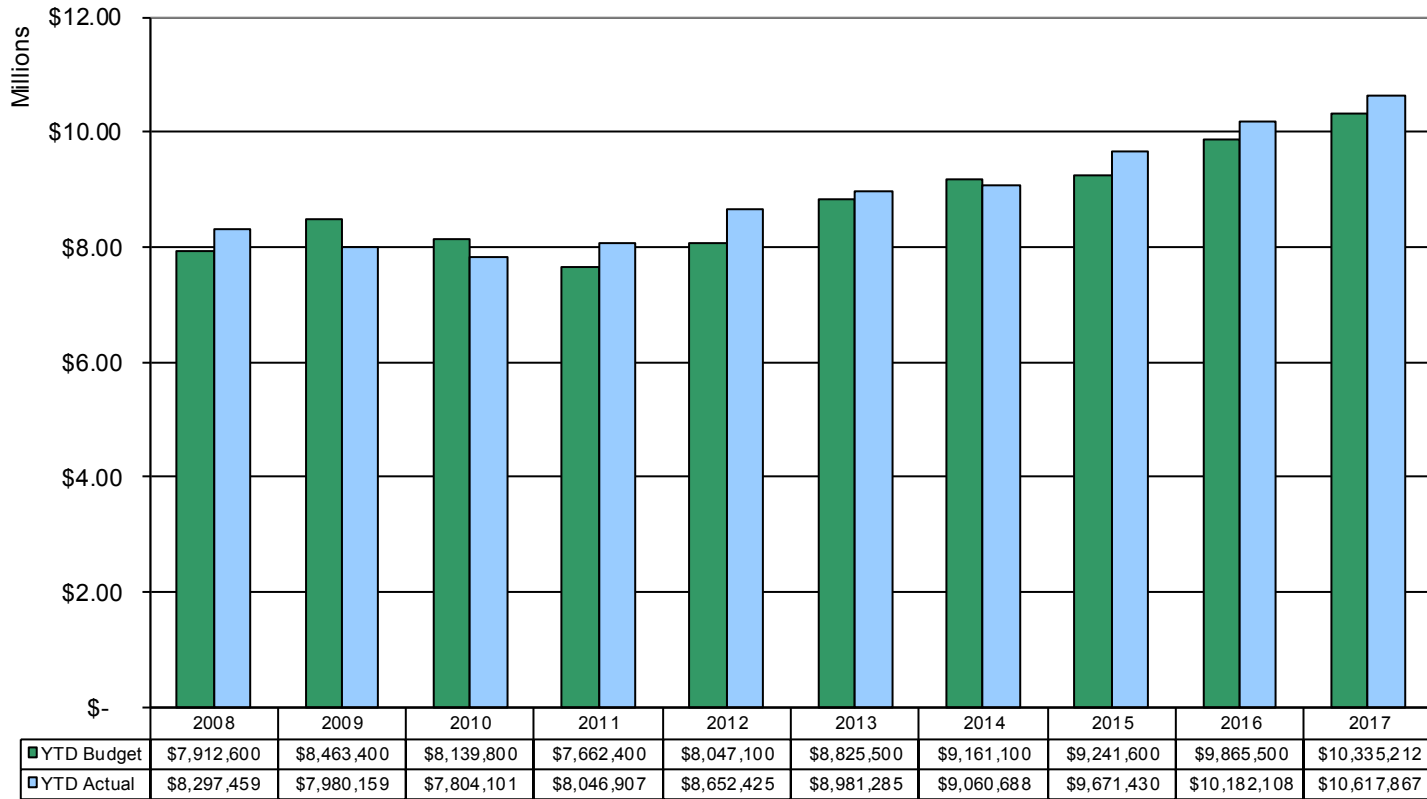
For project updates:

Transportation Bond Issue:

<http://ar-fayetteville.civicplus.com/1942/Transportation-Projects>

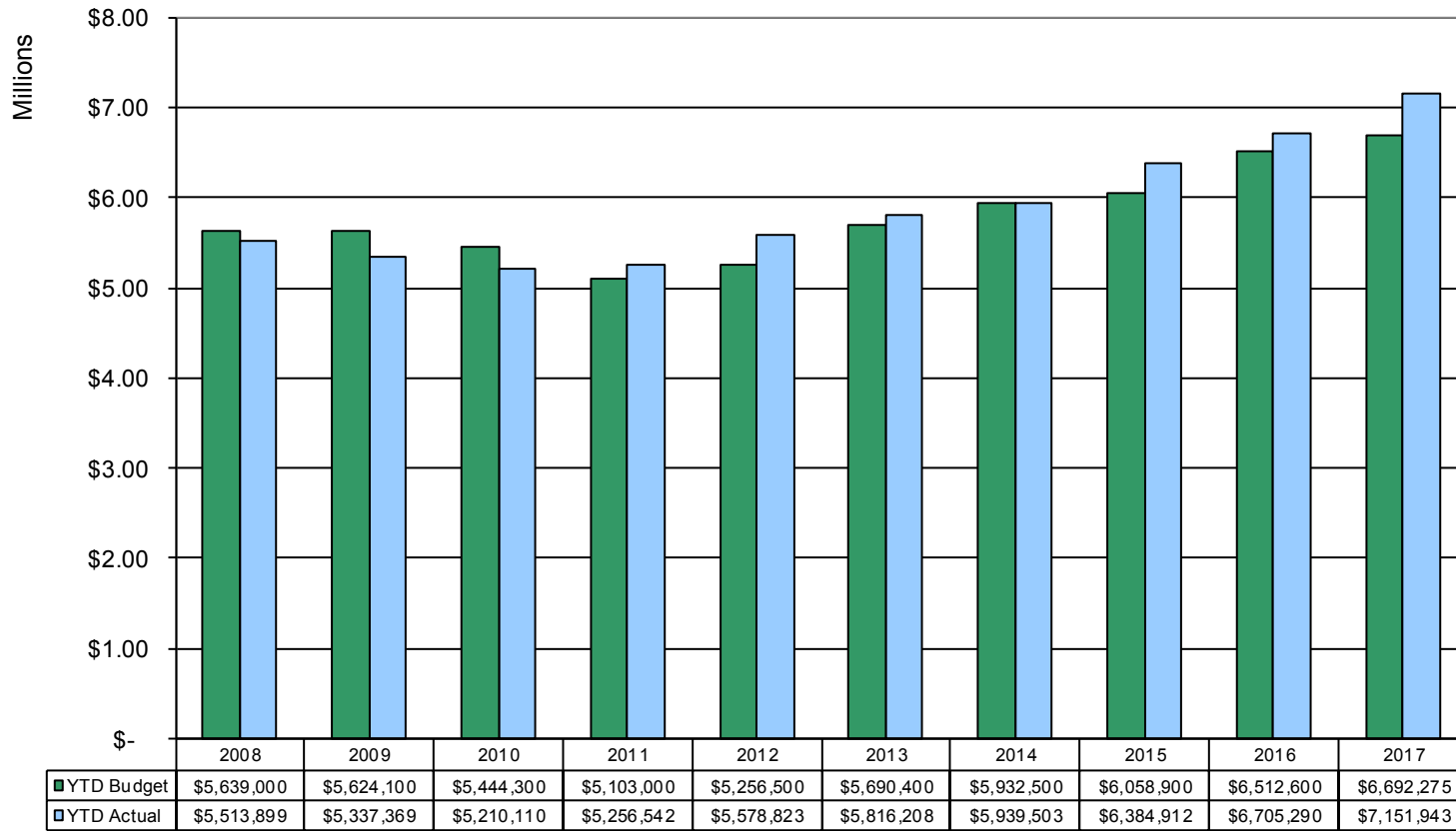
Comment: City sales tax collections are approximately 2.73% over budget at the end of the second quarter of 2017.

City Sales Tax Adopted Budgeted Revenues Compared to Actual Collections Year-to-Date



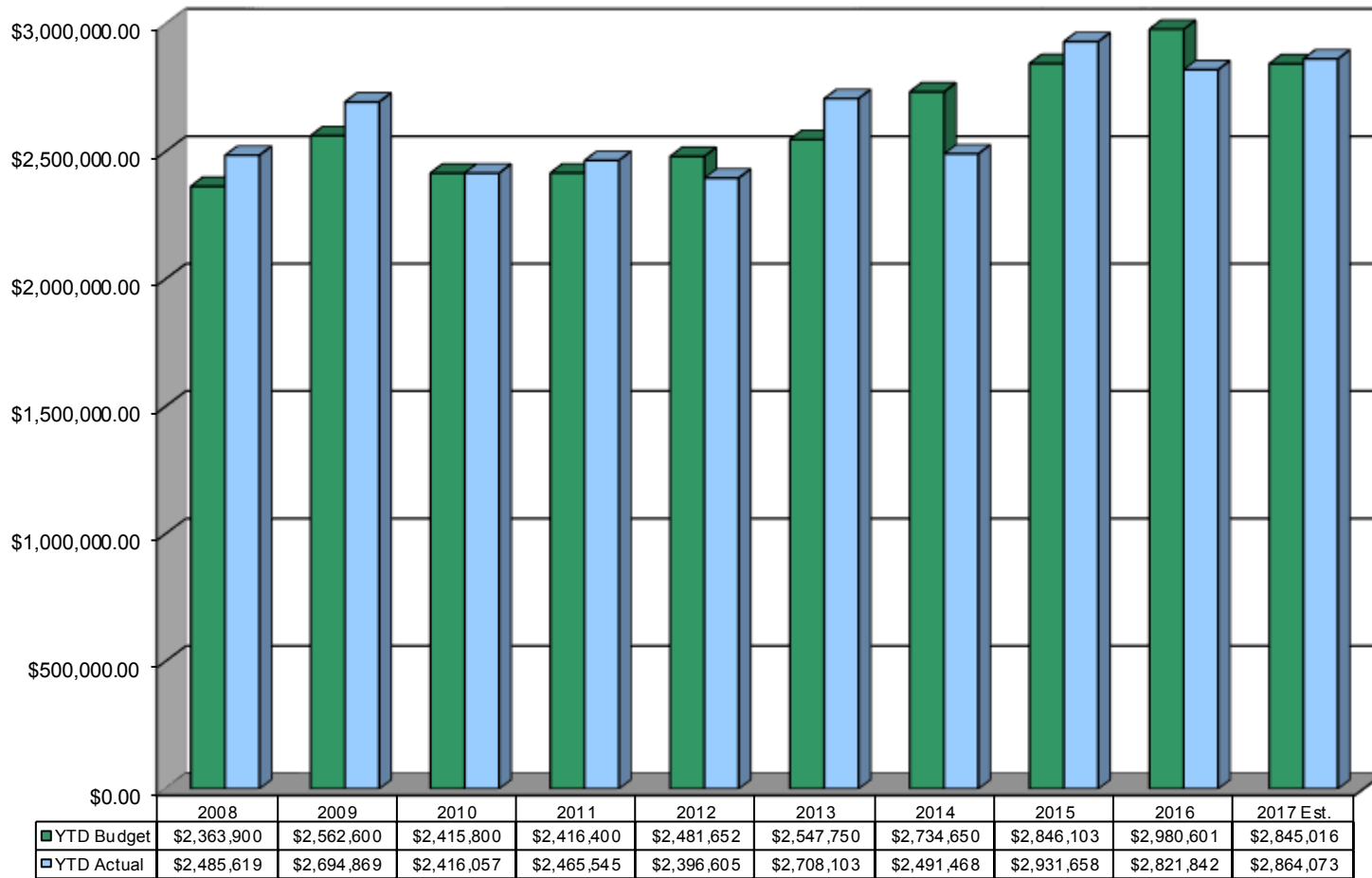
Comment: The City's portion of County sales taxes are up approximately 6.87% compared to budget at the end of the second quarter of 2017.

City's Portion of the County Sales Tax Adopted Budgeted Revenues Compared to Actual Collections Year-to-Date



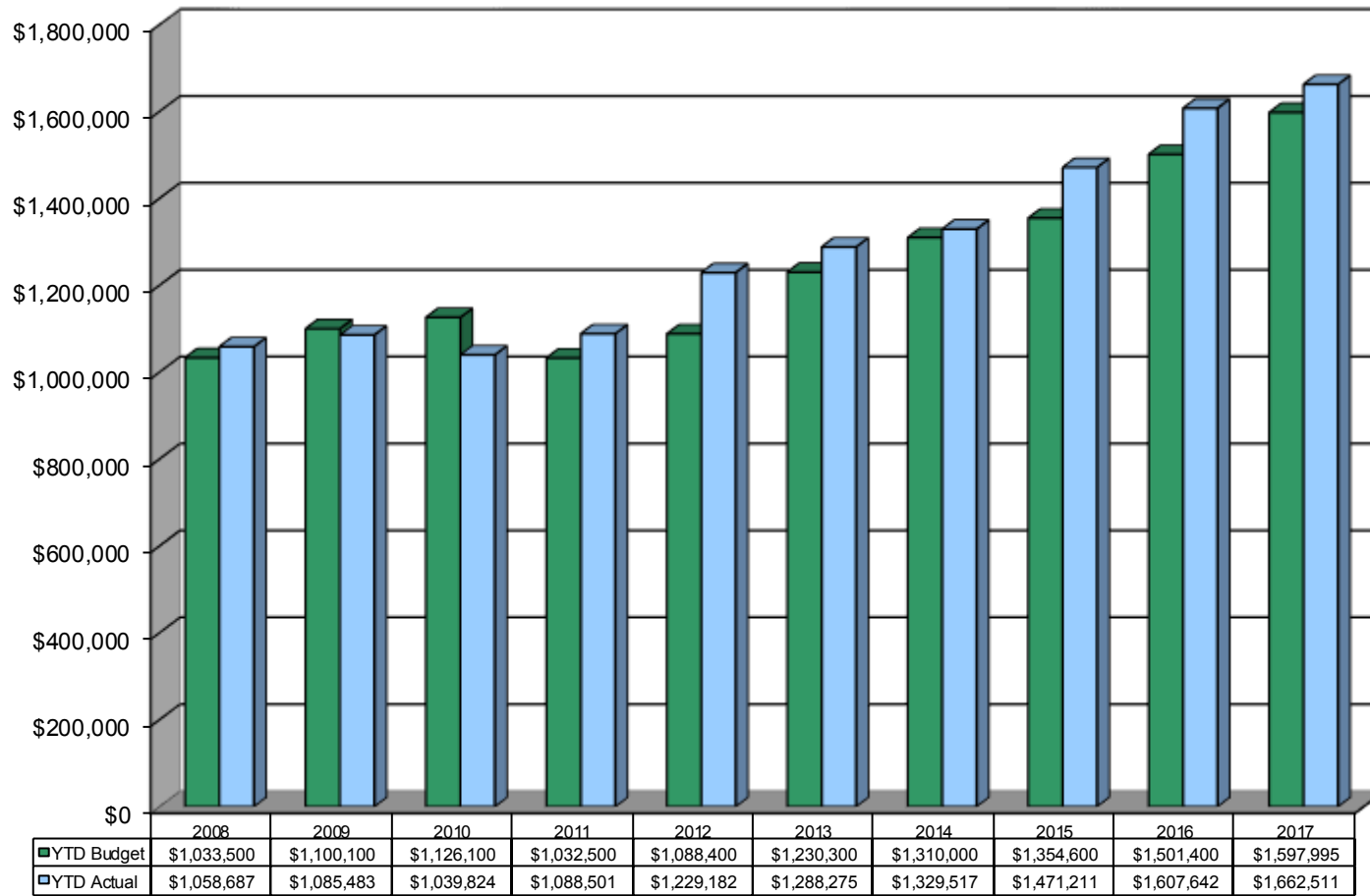
Comment: Franchise fee receipts are estimated at 0.7% over budget at the end of the second quarter of 2017.

Franchise Fees



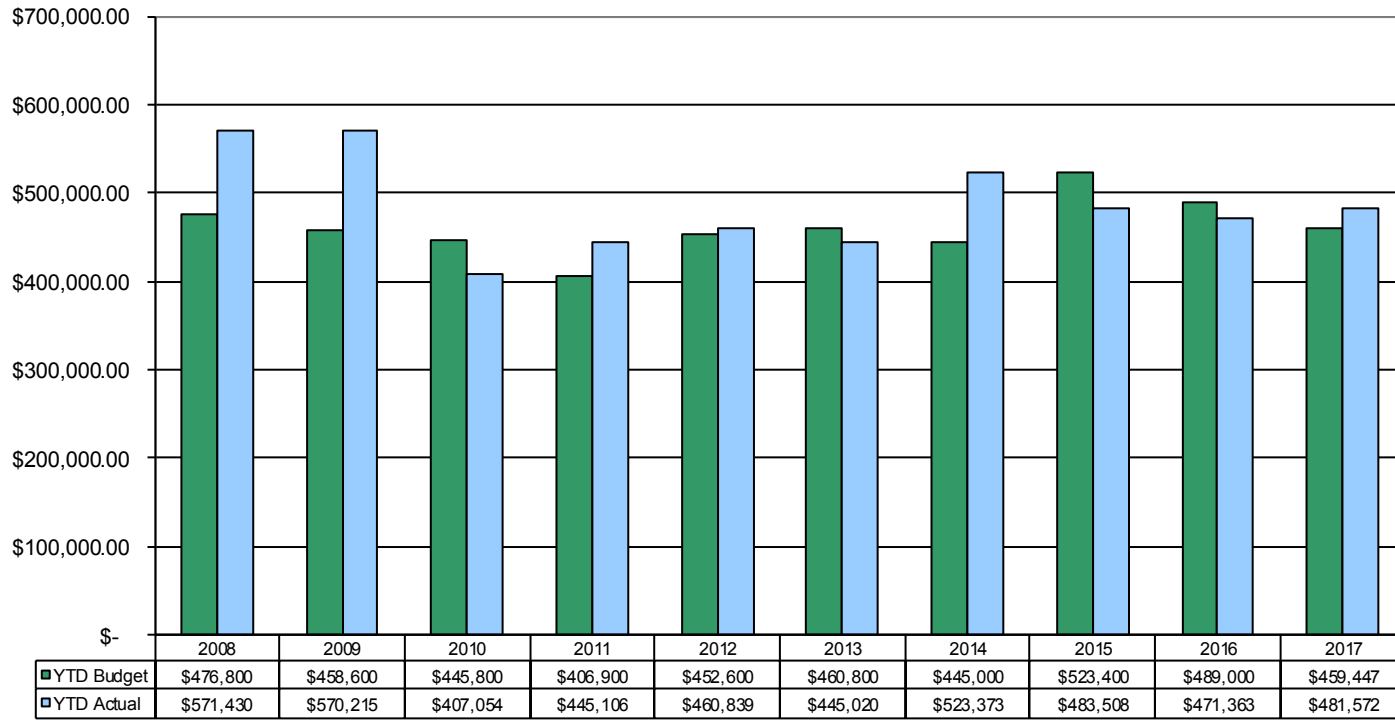
Comment: HMR Taxes were up 3.9% compared to budget at the end of the second quarter of 2017.

Parks Development HMR Tax



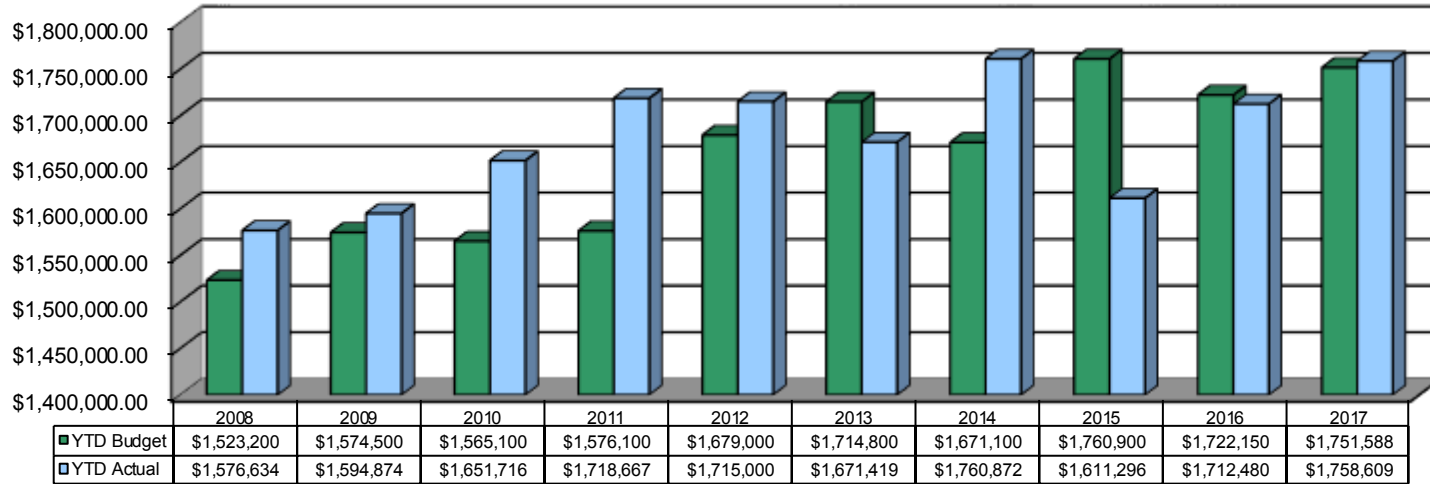
Comment: State Turnback was 4.82% greater than budget at the end of the second quarter of 2017.

State Turnback - General Fund

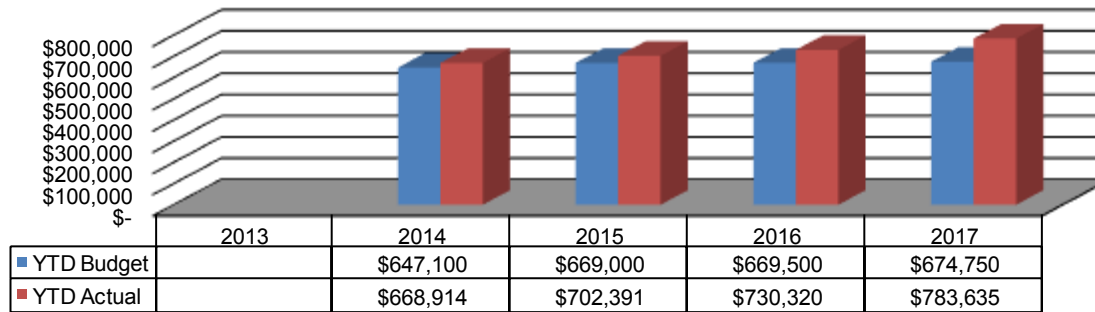


Comment: State Street Turnback is slightly more than budget. The State 1/2 cent Turnback for streets is 16.1% higher than budget at the end of the second quarter. However that growth is expected to slow in the third quarter.

State Turnback - Street Fund

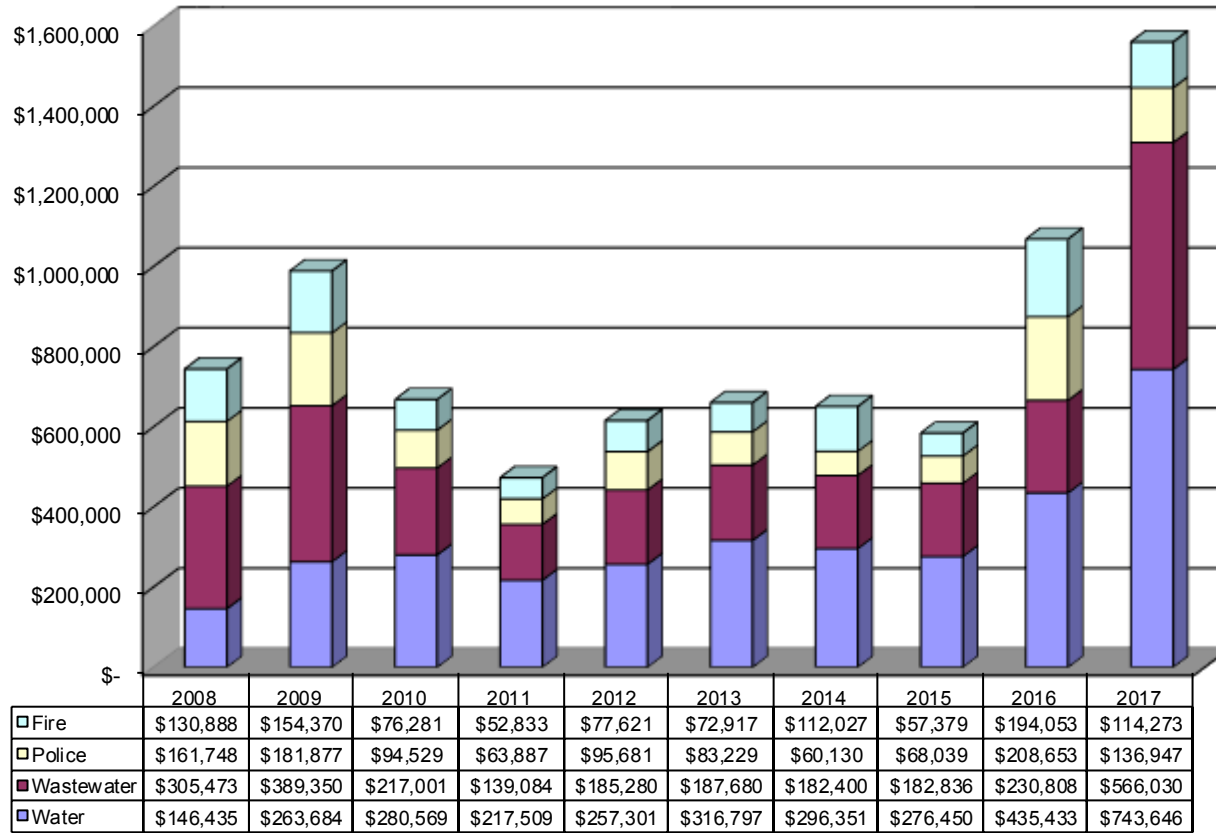


Half Cent State Turnback - Street Fund



Comment: Impact fees have increased dramatically at 46.0% over last year's actual collections at the end of the second quarter of 2017. This is primarily driven by increased water and sewer fee collections.

Impact Fee Revenues Year to Date



Comment:

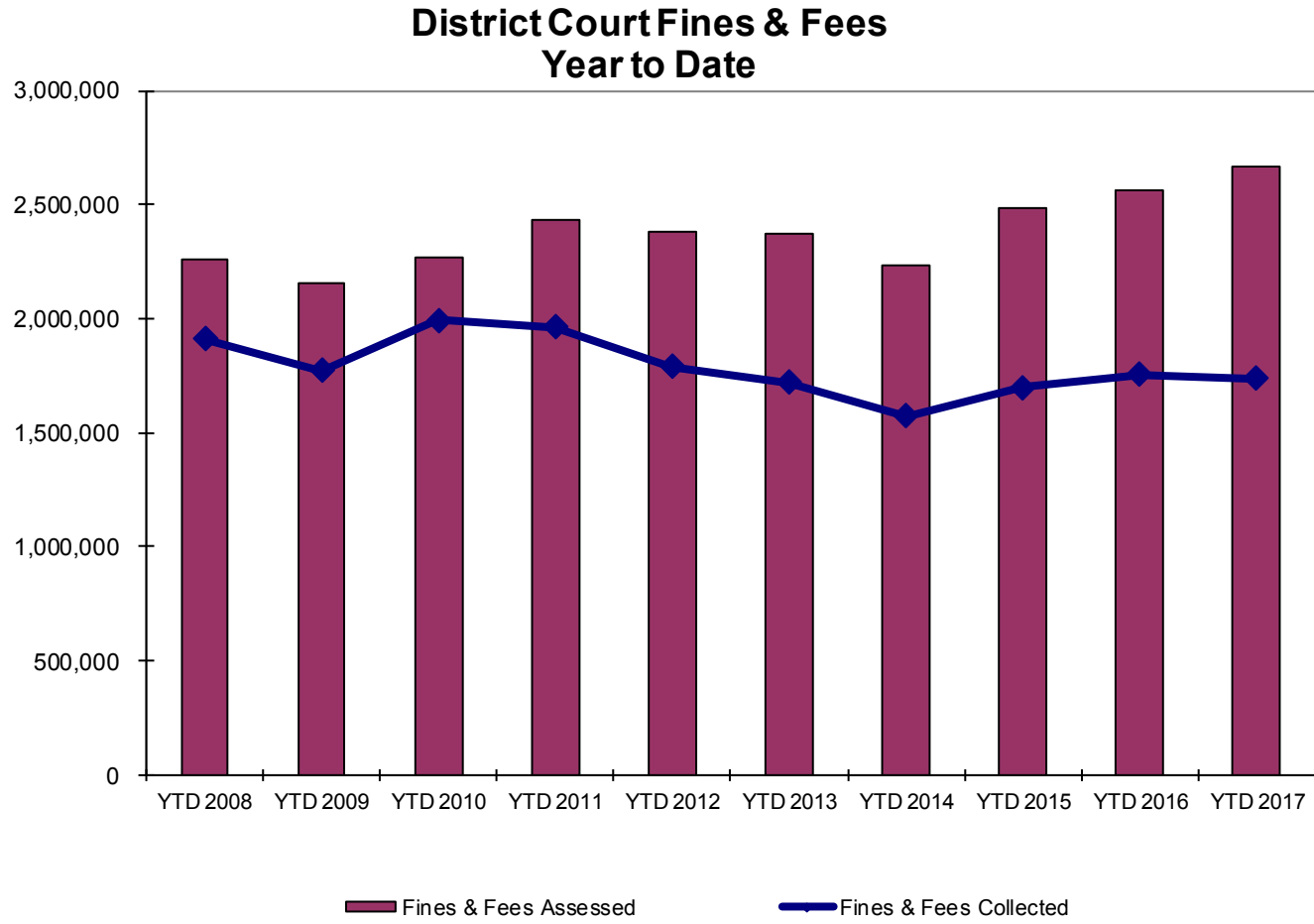
District Court Cases

| | 2012 Year-to-Date | 2013 Year-to-Date | 2014 Year-to-Date | 2015 Year-to-Date | 2016 Year-to-Date | 2017 Year-to-Date |
|--|----------------------|----------------------|----------------------|----------------------|----------------------|----------------------|
| Criminal | | | | | | |
| Cases Filed | 14,924 | 10,772 | 10,010 | 10,729 | 11,801 | 11,341 |
| Cases Adjudicated | 18,383 | 14,767 | 14,327 | 13,267 | 14,861 | 12,401 |
| Probation | | | | | | |
| Interviews Conducted | 381 | 198 | 342 | 256 | 458 | 543 |
| Persons / Hours of Public Service Assigned | 270 / 2,330 | 77 / 2,084 | 147 / 1,708 | 314 / 2,055 | 551 / 1,528 | 426 / 2,659 |
| Small Claims | | | | | | |
| Cases Filed | 1,173 | 851 | 1,021 | 903 | 913 | 731 |

District Court Fines & Fees

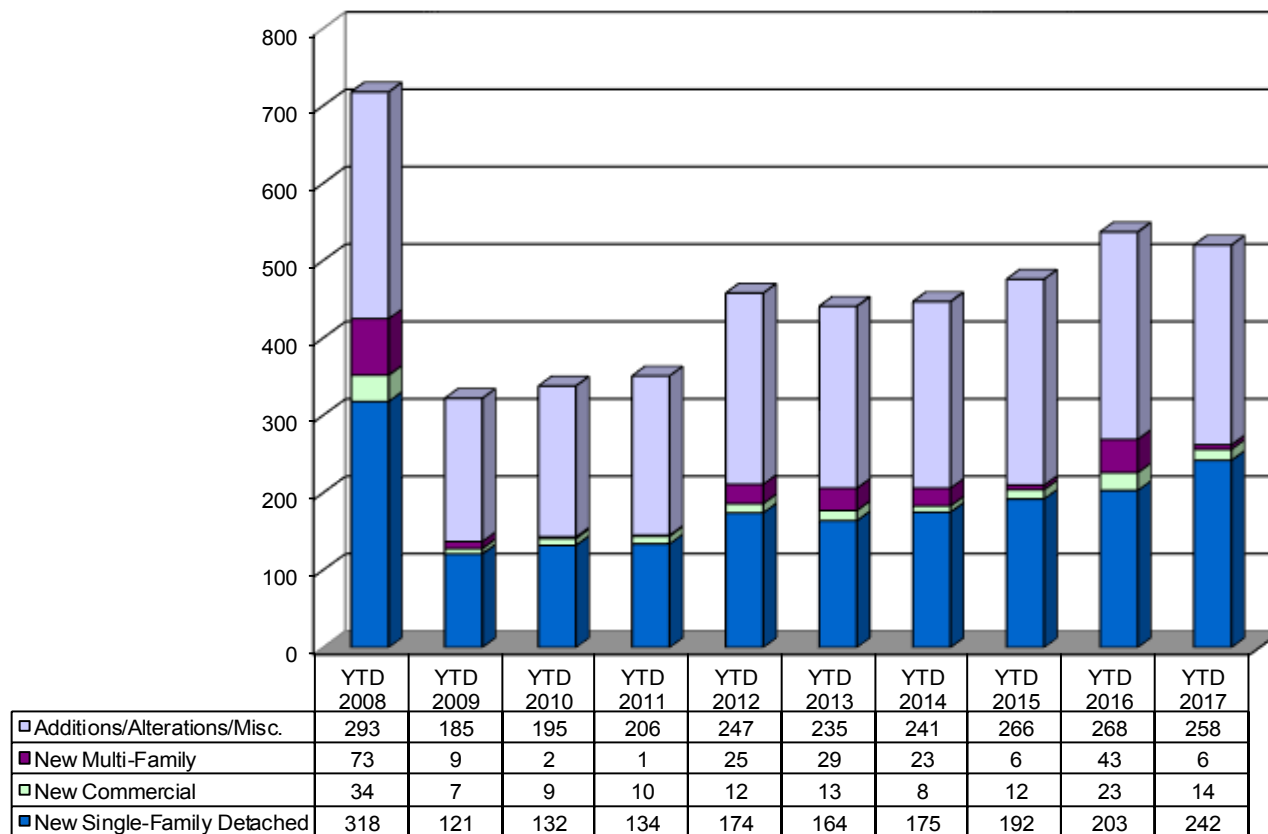
| | 2012 Year-to-Date | 2013 Year-to-Date | 2014 Year-to-Date | 2015 Year-to-Date | 2016 Year-to-Date | 2017 Year-to-Date |
|--------------------------|----------------------|----------------------|----------------------|----------------------|----------------------|----------------------|
| Fines & Fees Assessed | 2,380,609 | 2,369,826 | 2,236,876 | 2,487,741 | 2,564,003 | 2,663,335 |
| Fines & Fees Collected | 1,787,325 | 1,718,843 | 1,571,832 | 1,698,253 | 1,753,734 | 1,736,426 |
| Fines & Fees Uncollected | 593,284 | 650,983 | 665,044 | 789,488 | 810,269 | 926,909 |
| % of Fees Collected | 75% | 73% | 70% | 68% | 68% | 65% |

Comment:



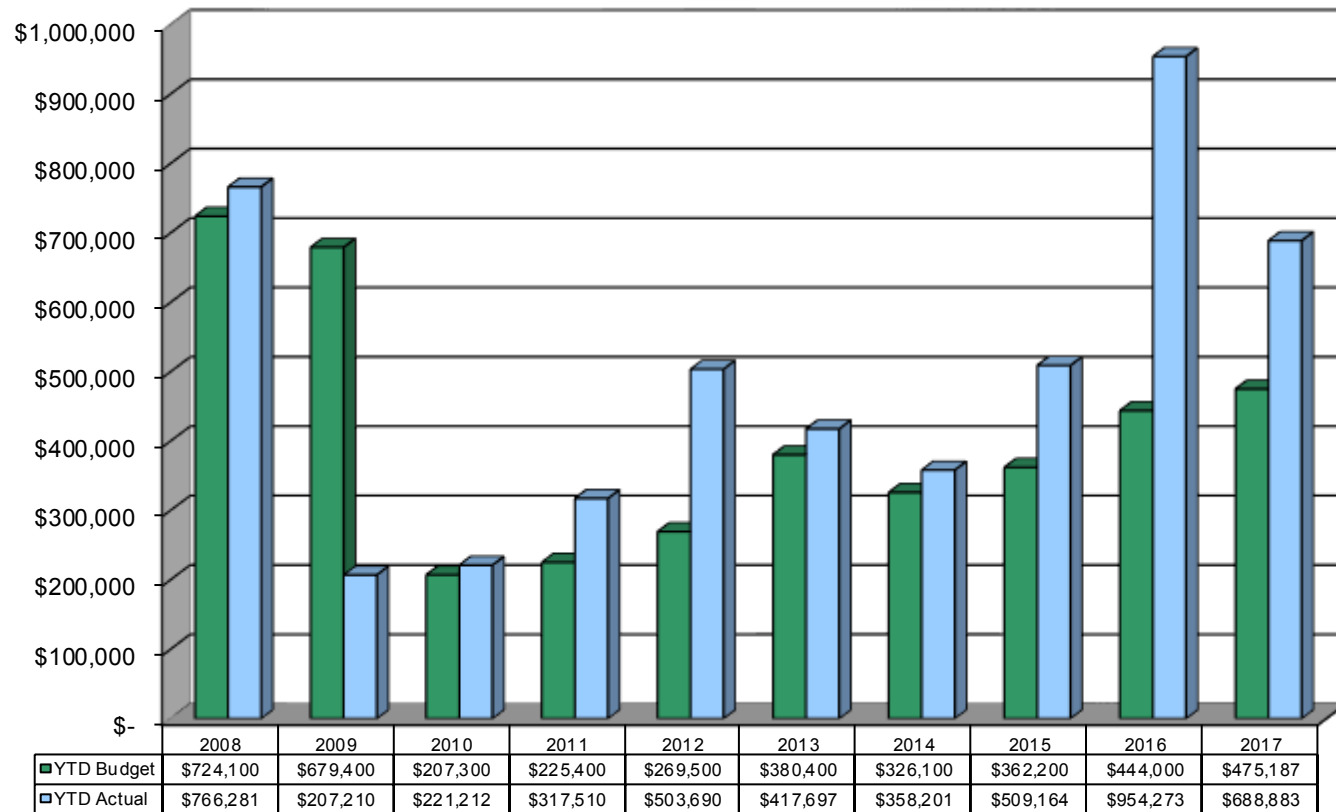
Comment: Permits issued for single family construction continue to show a large increase over the same period in 2016. Permits issued for new commercial projects have slowed through mid-year. Multi-family permits appear to be adjusting to quarterly averages; however, staff anticipates an increase in the next reporting series. Additions and alterations activity continues to track closely with previous years.

Total Building Permits Issued Year to Date



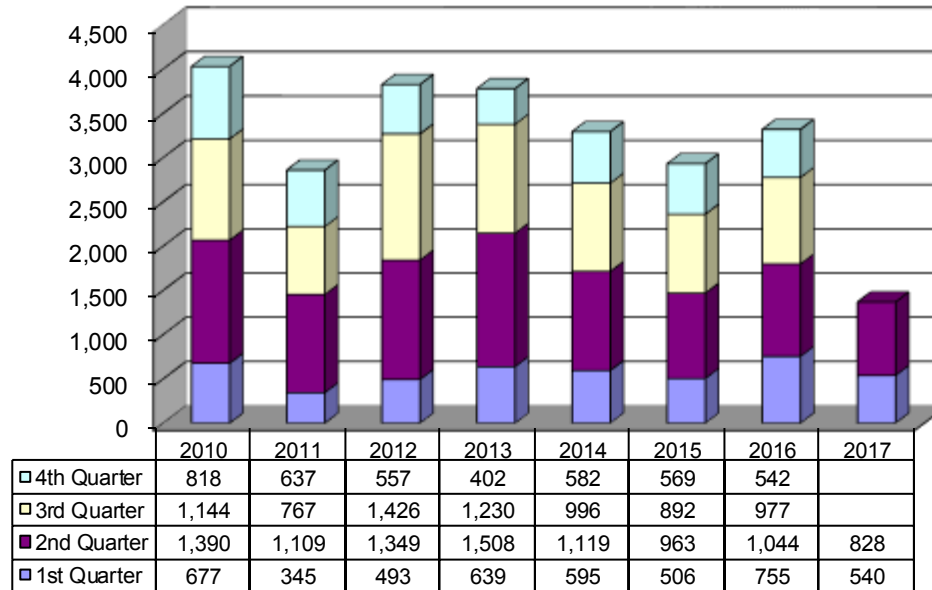
Comment: Building permit revenue has remained strong through the second quarter of 2017. Staff expects the trend to continue through the rest of the year.

Building Permit Fees Collected Year-to-Date



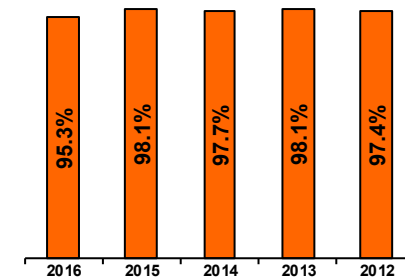
Comment: The top graph shows the amount of requests for service the Code Compliance Program works annually by quarter. The bottom graph reflects the violation abatement success rate for the past five years.

Code Compliance Service Requests



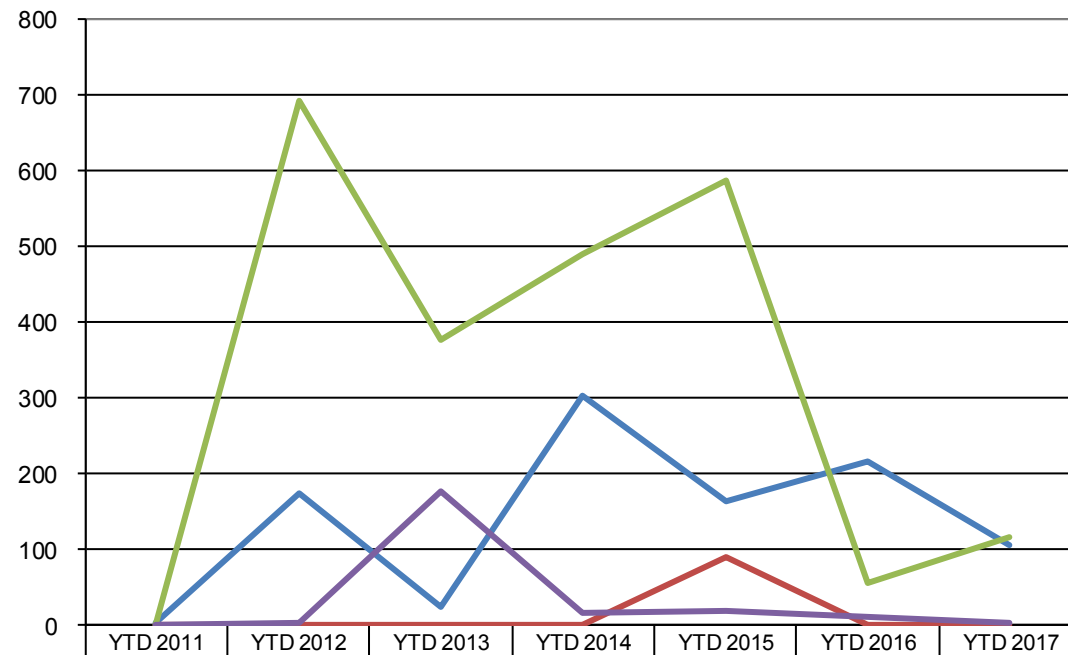
Success Rates for Code Compliance

| | Total Service Requests | Violations Found | Violations Abated | Success Rate |
|-------------|------------------------|------------------|-------------------|--------------|
| 2016 | 3,318 | 2,999 | 2,858 | 95.3% |
| 2015 | 2,930 | 2,668 | 2,617 | 98.1% |
| 2014 | 3,292 | 3,060 | 2,991 | 97.7% |
| 2013 | 3,779 | 3,492 | 3,424 | 98.1% |
| 2012 | 3,825 | 3,674 | 3,580 | 97.4% |



Comment: The single family dwelling units are primarily in a new subdivision in the southeast portion of the City near Deadhorse Mountain Road and a new subdivision on the west side of Ruppel Road, north and south of Wedington Drive.

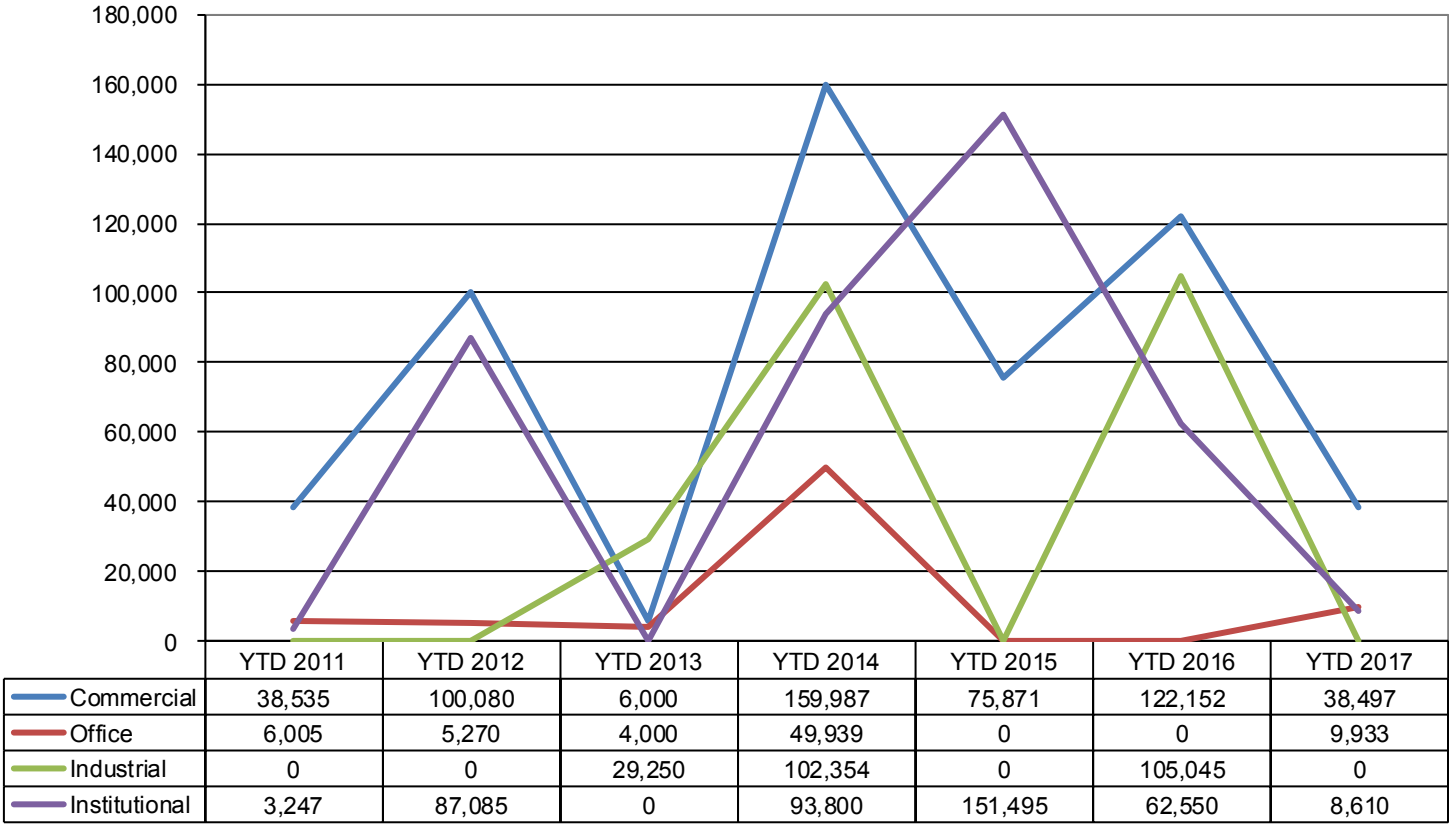
Dwelling Units by Type Approved by the Planning Commission or Development Services



| | | | | | | | |
|--------------------------------------|---|-----|-----|-----|-----|-----|-----|
| Single Family Homes | 4 | 174 | 23 | 304 | 163 | 217 | 107 |
| Townhomes | 0 | 0 | 0 | 0 | 91 | 0 | 0 |
| Multi-family/Condominium | 0 | 692 | 376 | 490 | 588 | 55 | 116 |
| Single Family Homes in Planning Area | 1 | 2 | 177 | 17 | 18 | 11 | 2 |

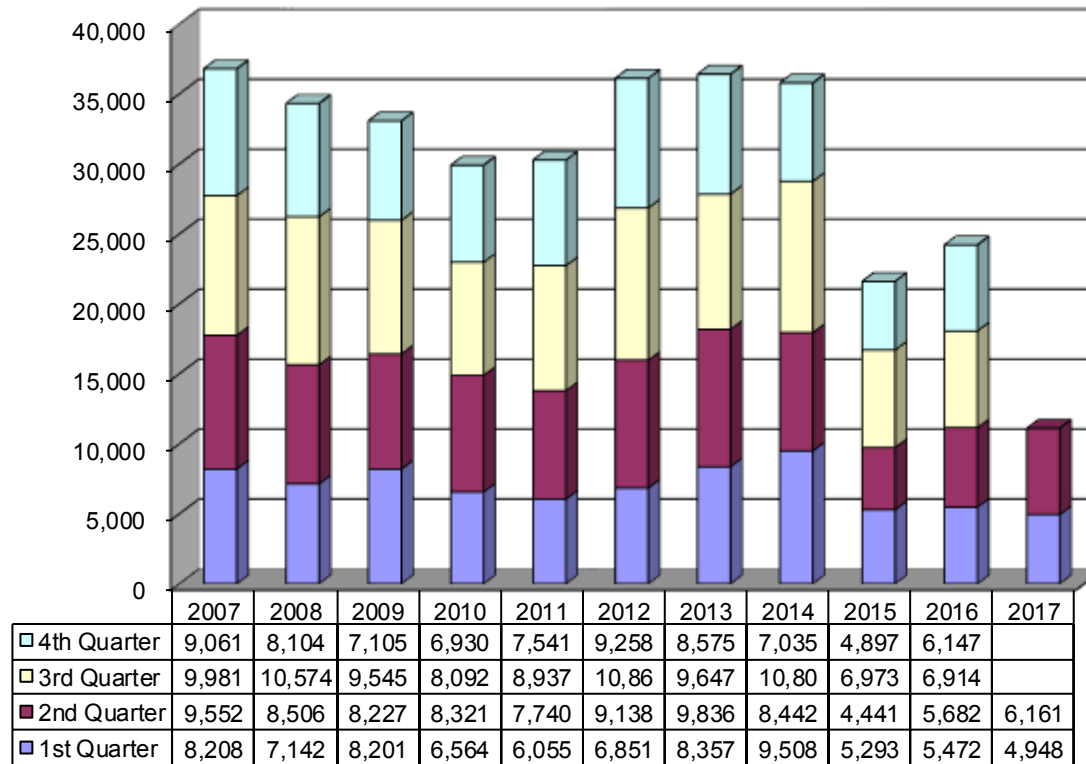
Comment: The non-residential space includes a variety of smaller businesses such as a new commercial/industrial area near Scull Creek Trail, a new Panera Bread on Martin Luther King, the Theatre Squared project downtown, and several smaller office buildings.

Non Residential Square Footage by Type Approved by the Planning Commission or Development Services



Comment: Airport operations are up from the second quarter of 2016. The operations should remain consistent with the skydiving operations beginning at the field, the return of students, and football season.

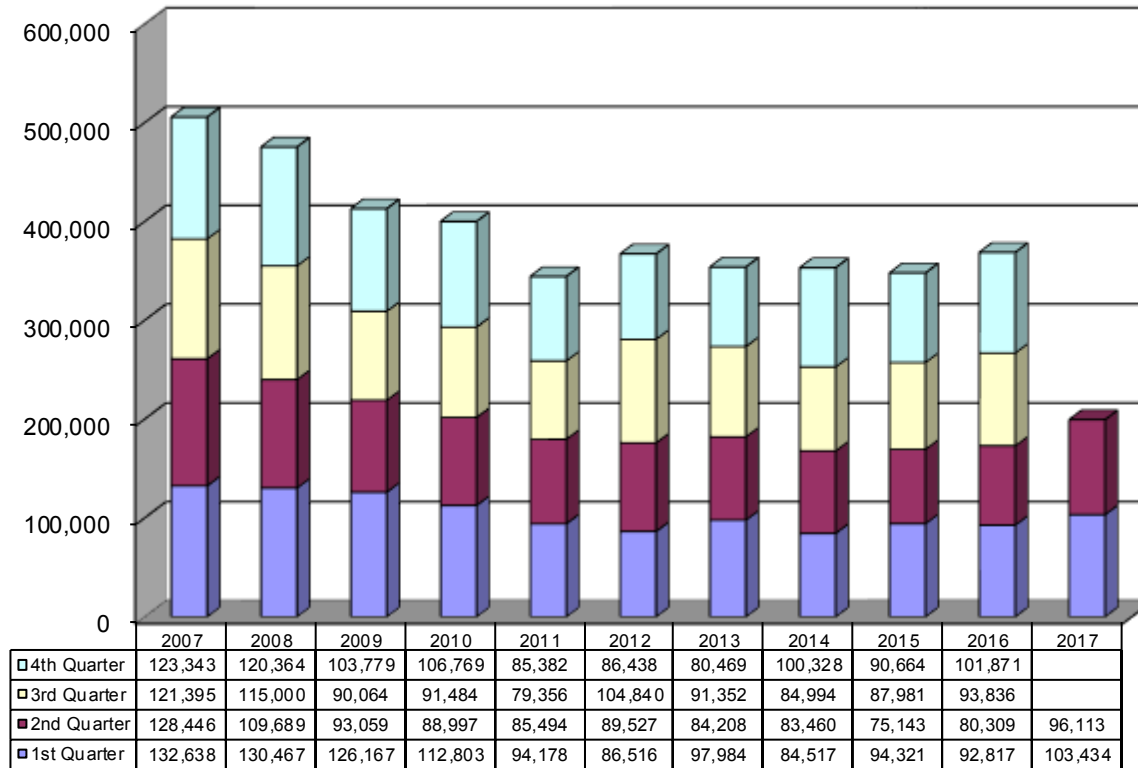
Airport Operations* (Number of Occurrences)



*A takeoff, landing, or transitioning through Drake Field airspace during tower operating hours.

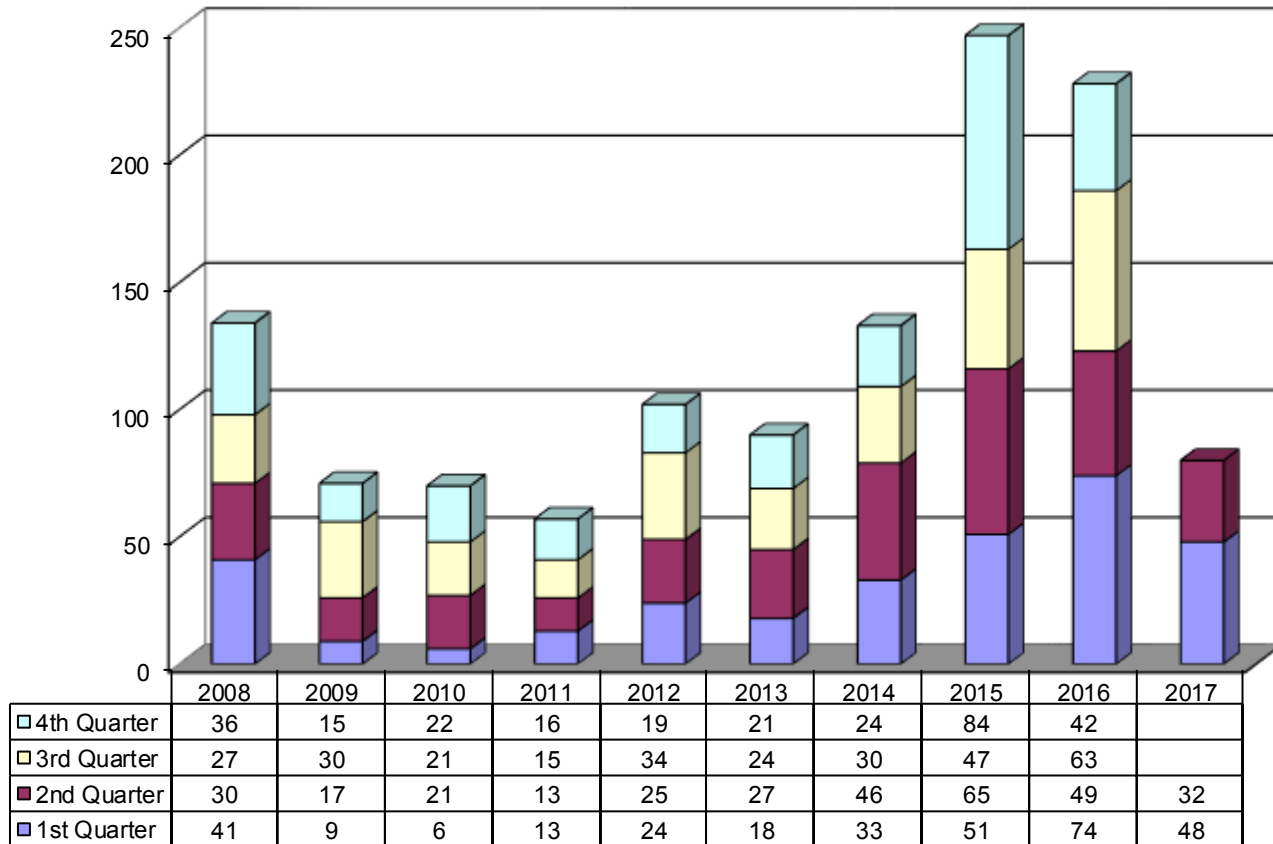
Comment: Fuel sales for the second quarter are up gallons over second quarter 2016, mostly due to charters and the implementation of the CAA membership. These numbers give confidence that the airport is on track to meet or exceed the goal of selling 350,000 gallons of fuel for the year.

Airport Fuel Sales (In Gallons)



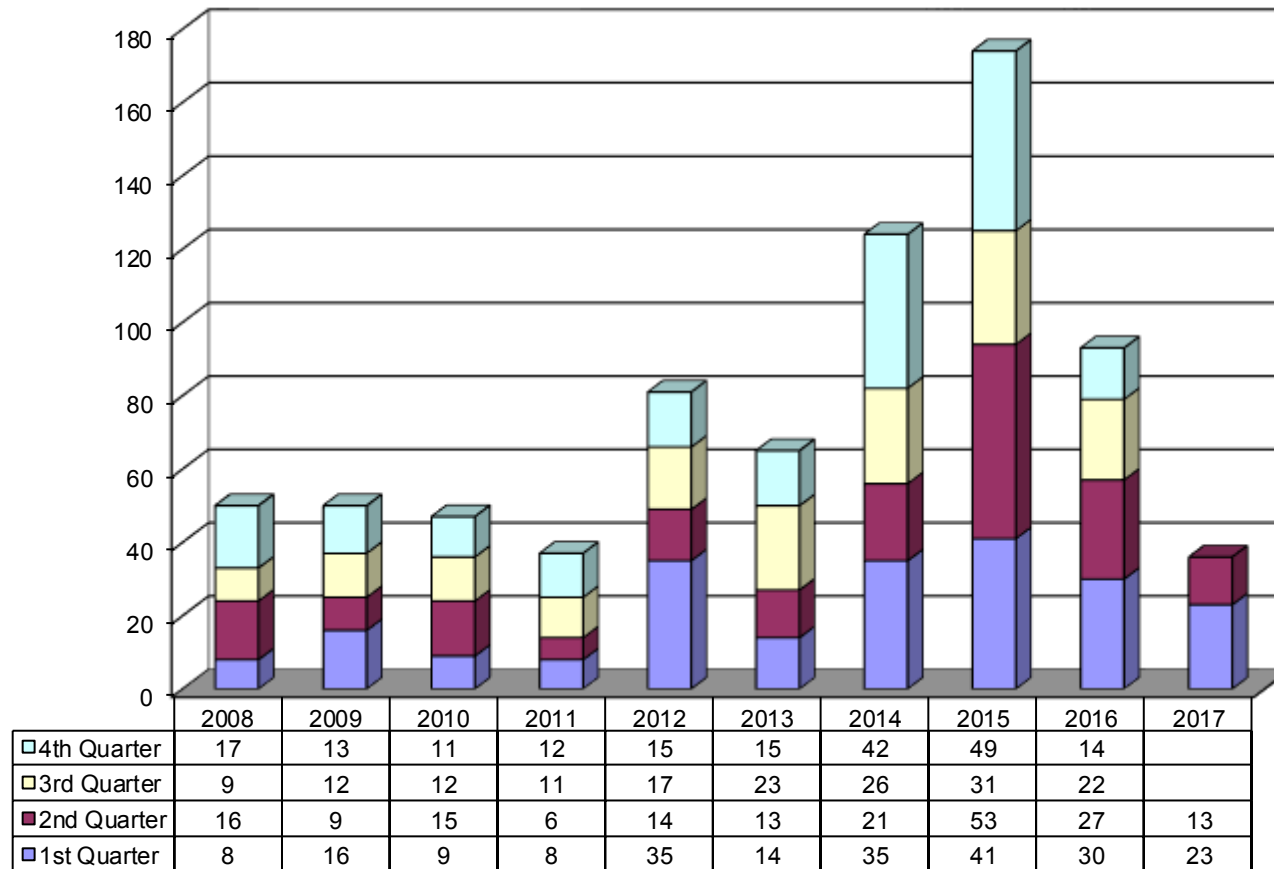
The first two quarters of 2017 shows strong growth, but less than the last two years.

Number of New Water Connections Made



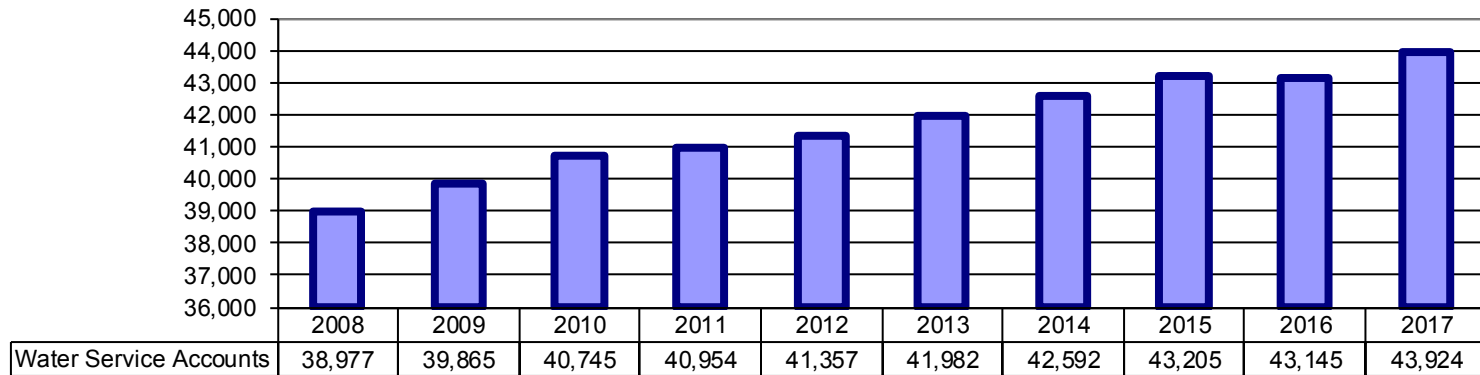
Comment: The first two quarters of 2017 show slowing growth, compared to the previous three years..

Number of New Sewer Connections Made

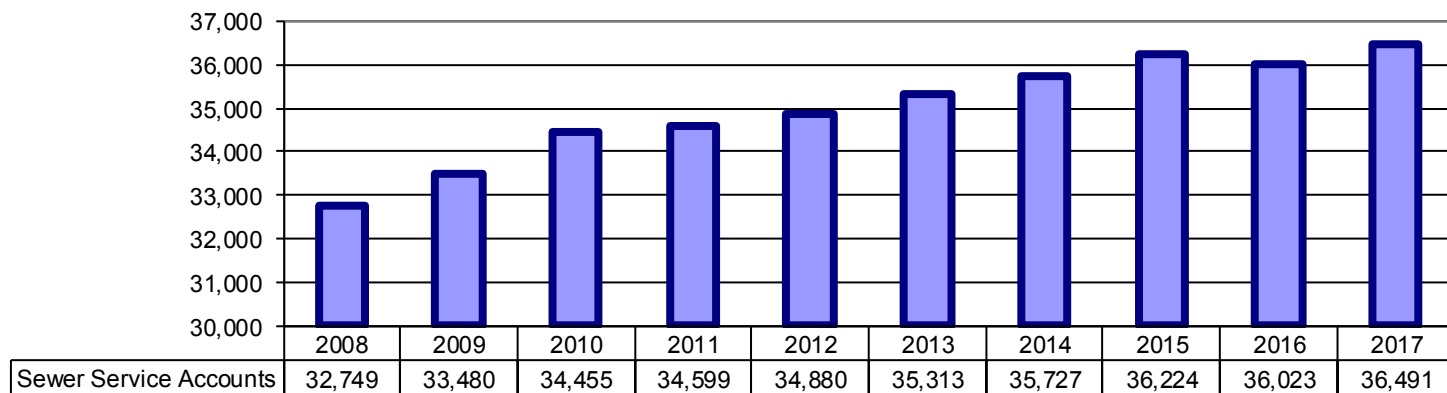


Comment: The number of Water and Sewer Accounts are now at an all time high.

Number of Water Service Accounts

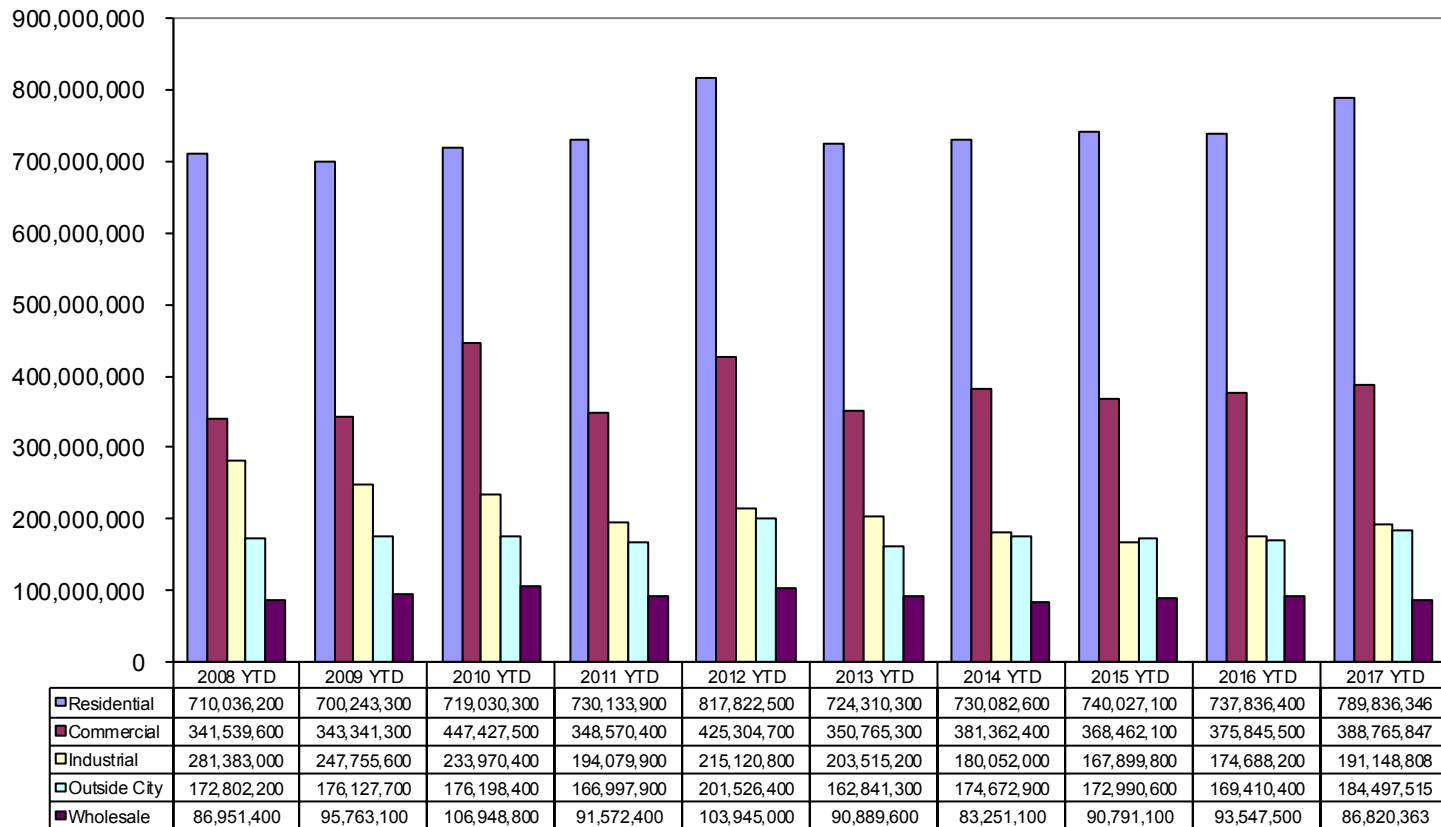


Number of Sewer Service Accounts



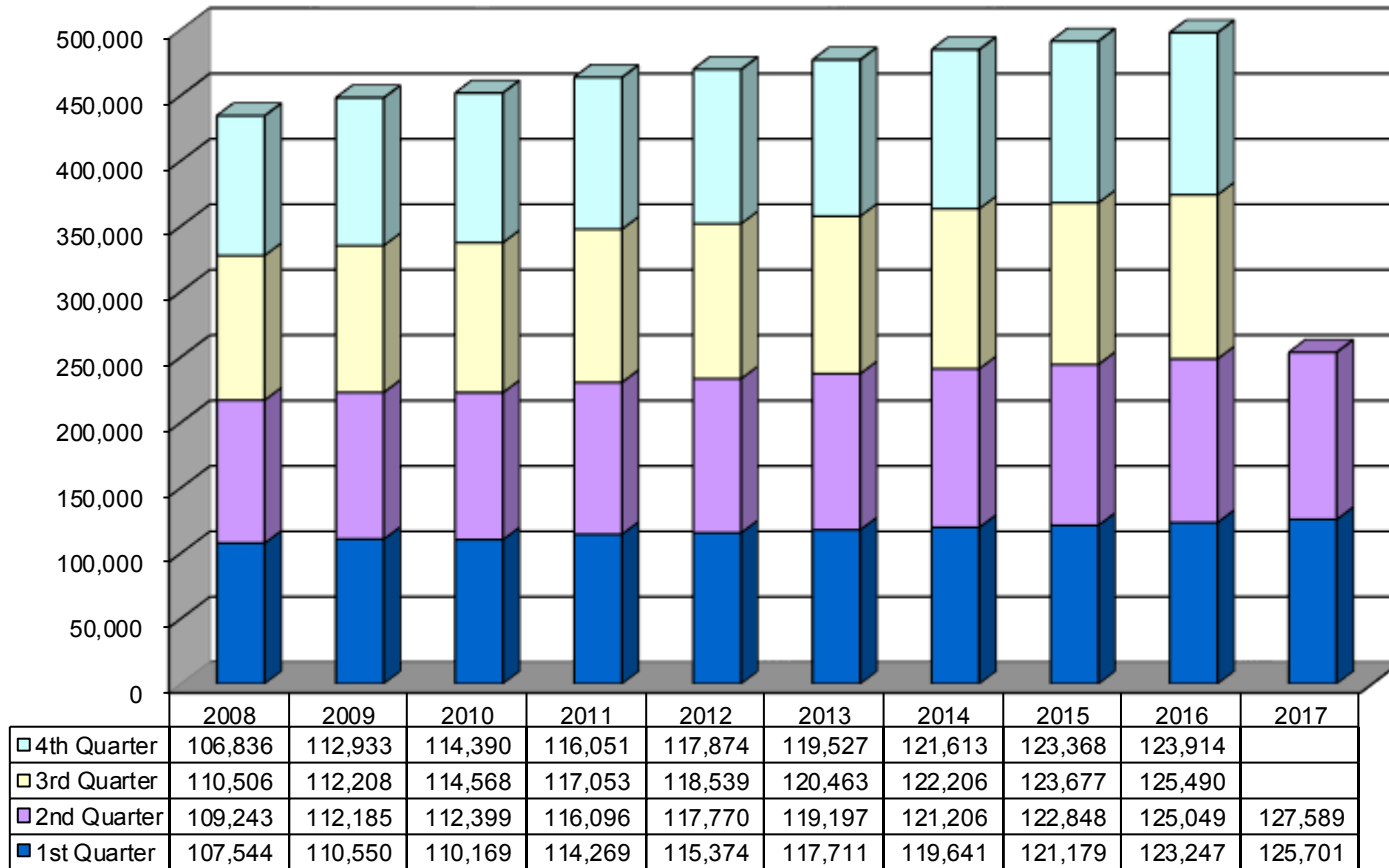
Comment: Water consumption for the second quarter of 2017 has a slight increase due to it being unseasonably warm for this time of year compared to first quarter 2016.

Water Consumption by Customer Type (In Gallons)



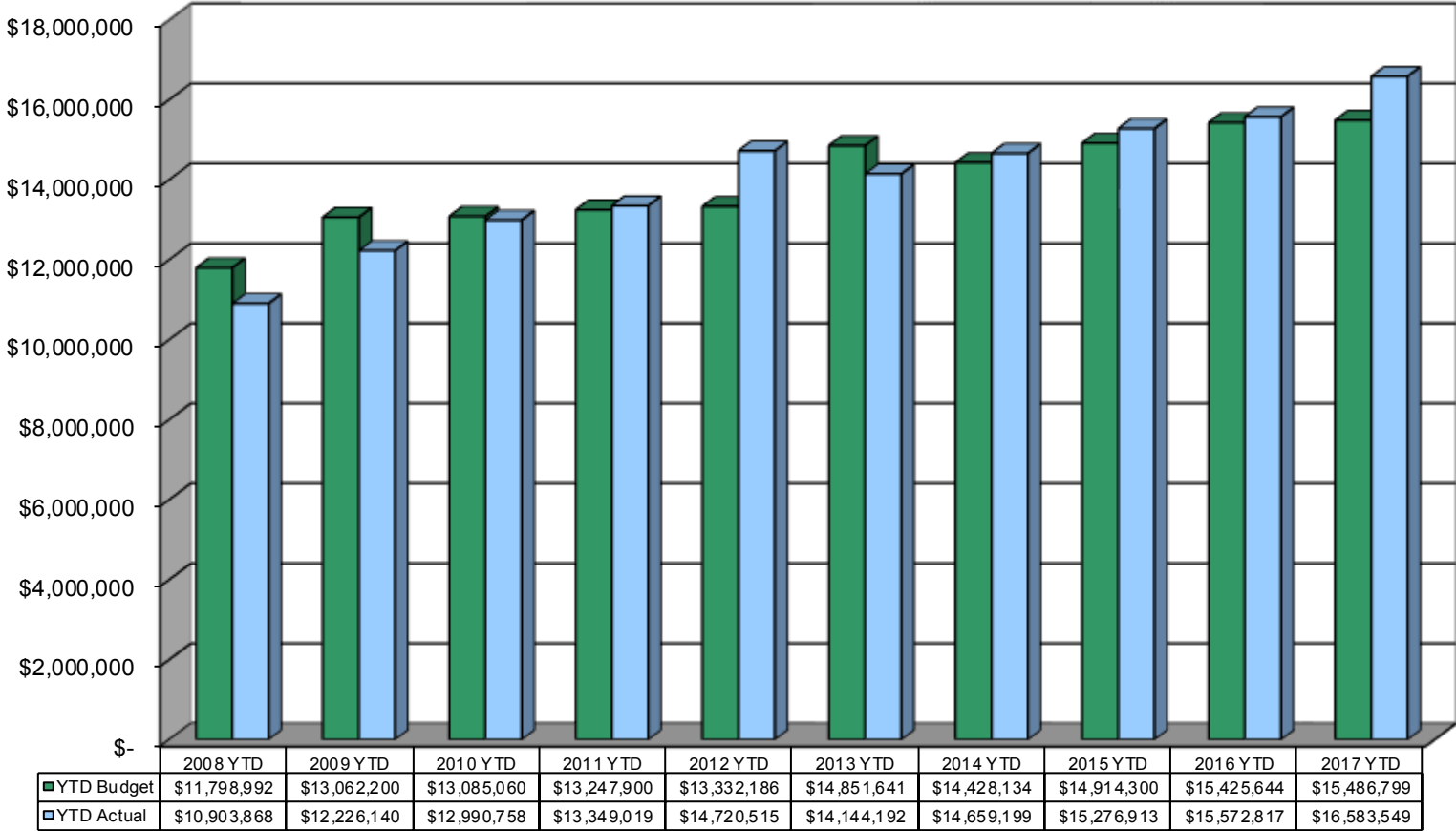
Comment: The second quarter of 2017 compared to the first quarter of 2016 indicates an increase in the amount of utility bills processed due to a small increase in the customer base.

Number of Water & Sewer Utility Bills Processed



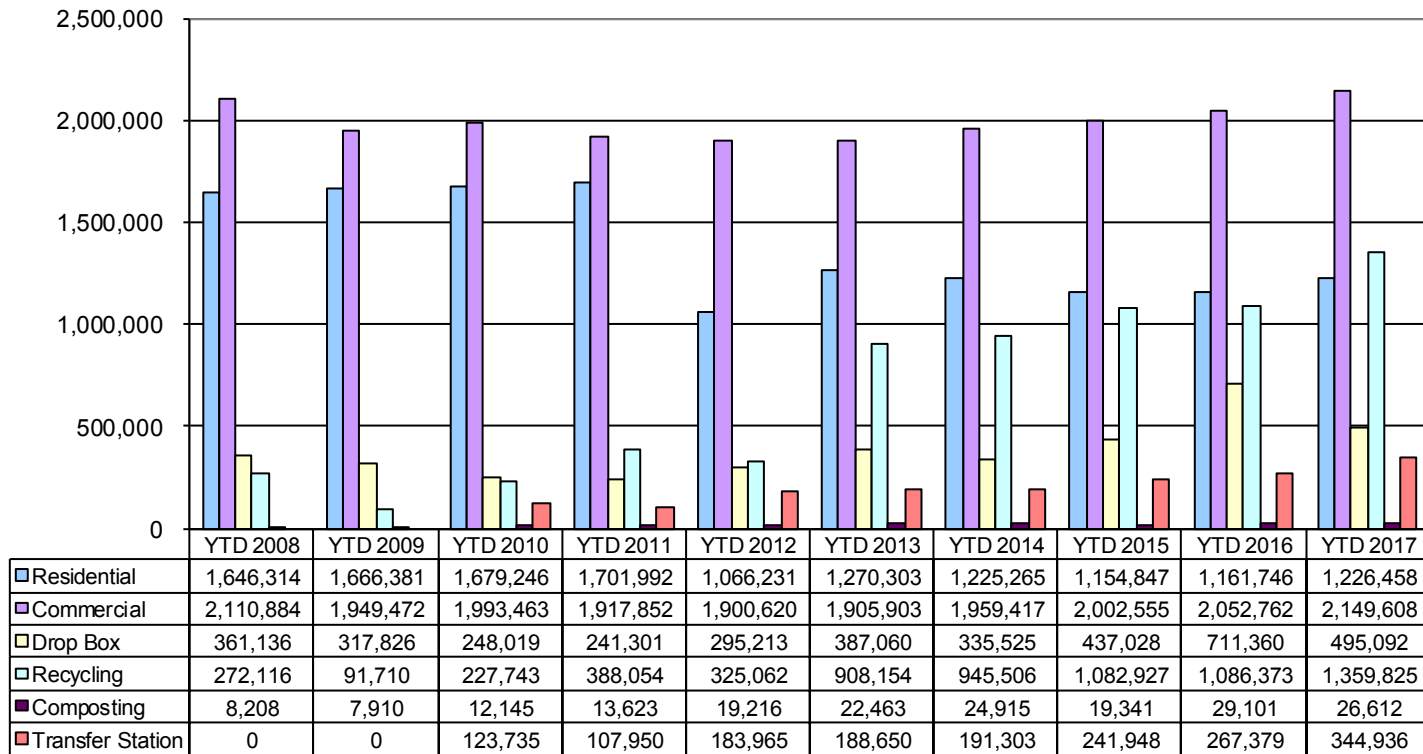
Comment: Revenue increased slightly in the first quarter due to a slight increase in customer base and an increase in utility rates—climate has been slightly warmer compared to the second quarter of the previous year.

Water & Sewer Billed Revenue Collected Budget Compared to Actual



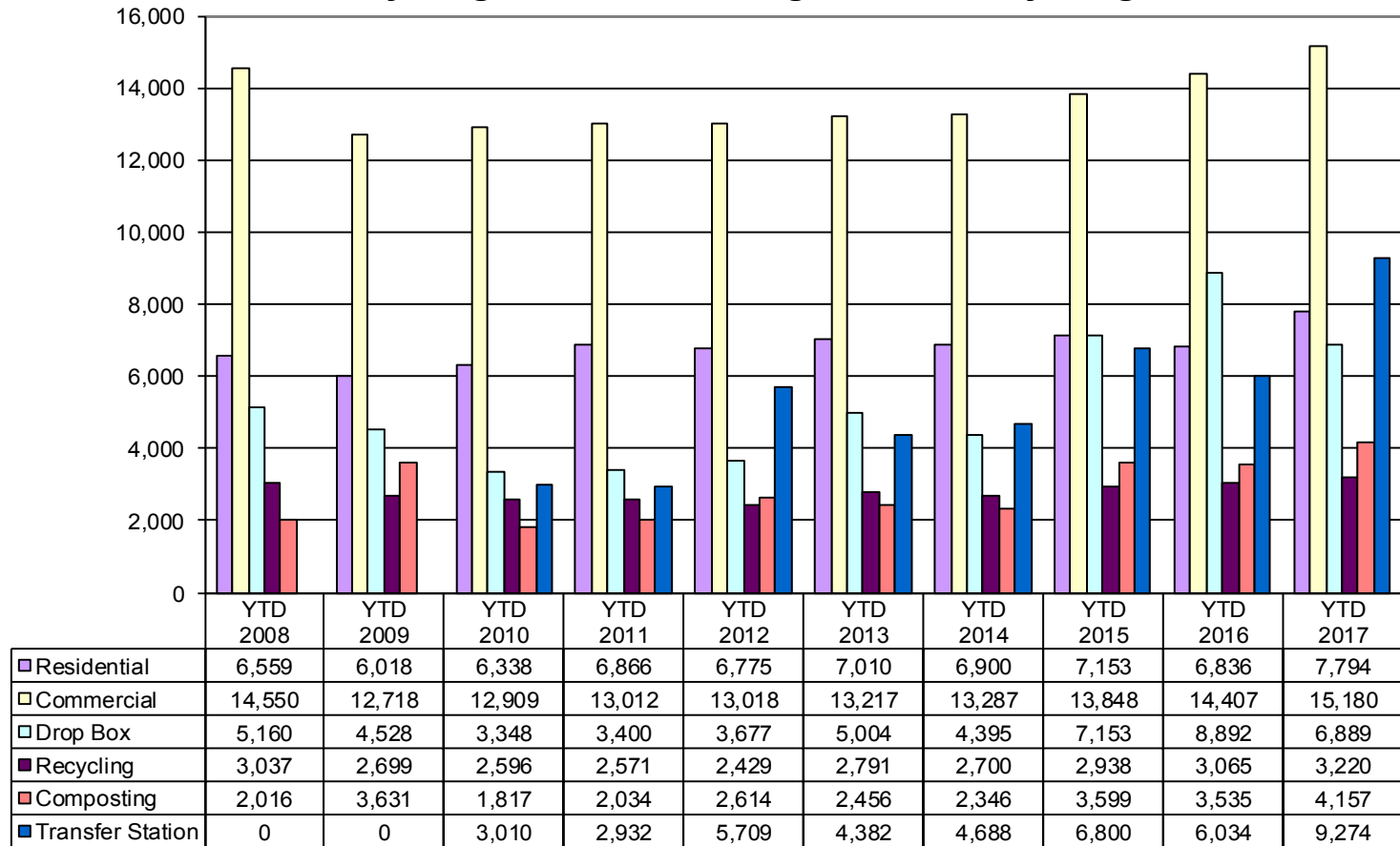
Comment: Recycling revenue includes an allocation per household for services provided. This amount was previously shown in residential revenue. Recycling revenue shown here includes both cardboard commodity sales and collection fees.
REVENUE NUMBERS FOR THE 2nd QUARTER OF 2017 HAVE NOT BEEN FINALIZED.

Recycling and Trash Program Revenues YTD 2nd Quarter (In Dollars)



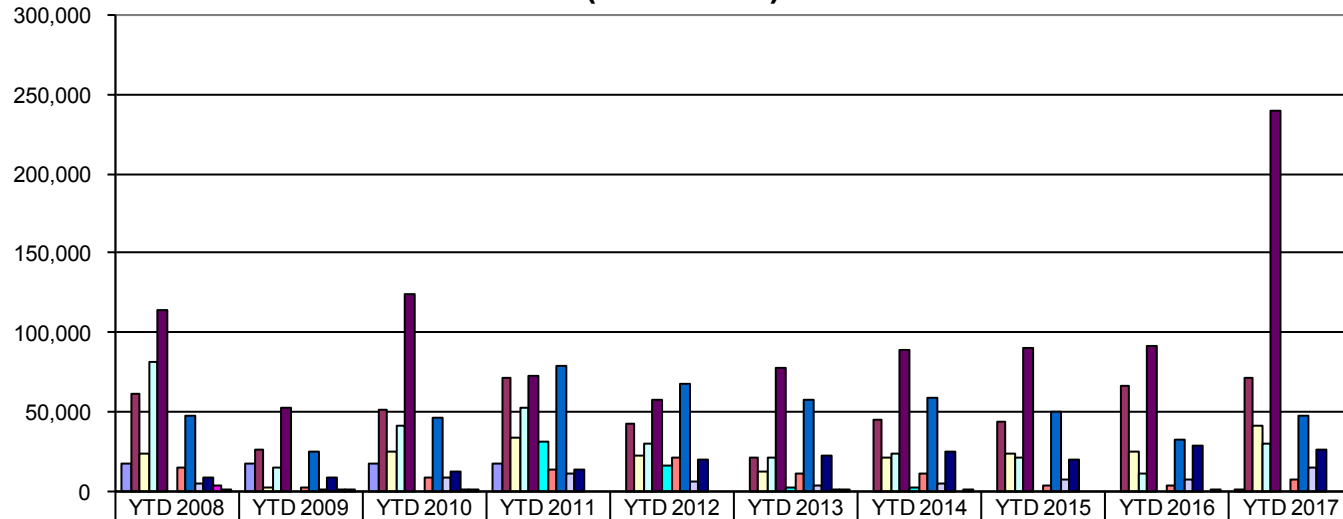
Comment: Recycling tonnage is reflective of materials sold through the second quarter. Waste tonnage is increasing in both residential and commercial collections and is attributable to a growing city. Drop Box program saw a decline with franchise holders likely taking more of the market share. Composting tonnage is subject to estimations for incoming materials. The Transfer Station is experiencing high volumes from outside haulers and the public.

Second Quarter Recycling and Trash Tonnage Collected by Program



Comment: Glass is sent to Ripple Glass and does not generate revenue or incur transportation expense. Ripple did rebate the City this year for the first time for a small amount. Cardboard revenue shown here is for commodity sales only and cardboard prices per ton reached near record highs in the first and second quarters due to high demand for boxes. Commodity prices for materials are volatile and change monthly, sometimes weekly. REVENUE NUMBERS FOR THE SECOND QUARTER OF 2017 HAVE NOT BEEN FINALIZED.

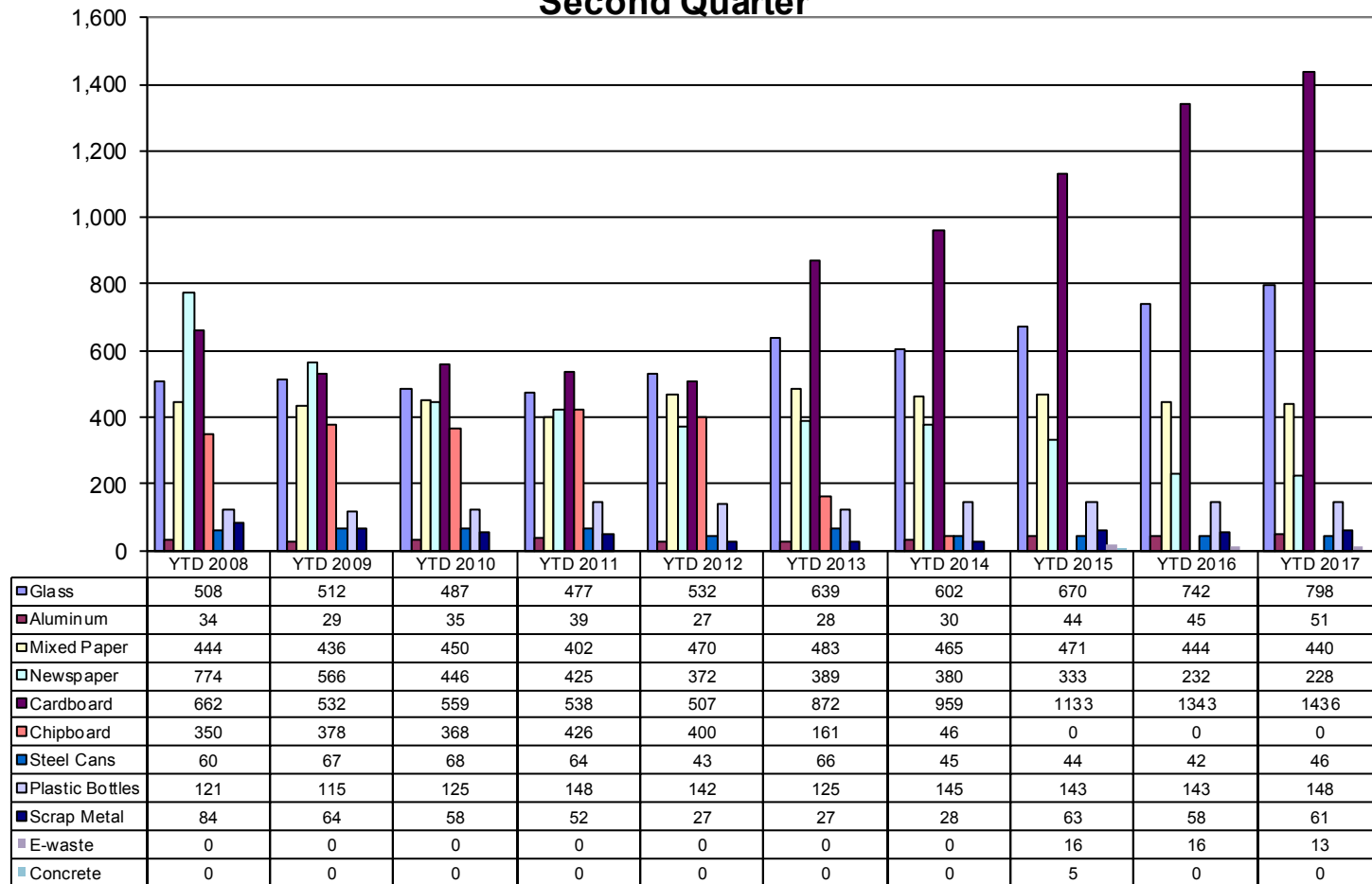
Recycling and Trash Revenue by Product Second Quarter (In Dollars)



| | YTD 2008 | YTD 2009 | YTD 2010 | YTD 2011 | YTD 2012 | YTD 2013 | YTD 2014 | YTD 2015 | YTD 2016 | YTD 2017 |
|------------------|----------|----------|----------|----------|----------|----------|----------|----------|----------|----------|
| ■ Glass | 17,804 | 17,611 | 16,851 | 16,962 | 0 | 0 | 0 | 0 | 0 | 760 |
| ■ Aluminum | 60,861 | 26,418 | 51,748 | 71,194 | 41,787 | 21,428 | 44,251 | 43,293 | 65,698 | 70,974 |
| ■ Mixed Paper | 22,864 | 2,254 | 25,185 | 33,668 | 22,791 | 12,682 | 20,548 | 23,332 | 24,422 | 40,986 |
| ■ Newspaper | 81,260 | 14,830 | 40,544 | 52,107 | 30,147 | 21,078 | 23,121 | 20,994 | 10,810 | 29,388 |
| ■ Cardboard | 113,776 | 52,721 | 124,718 | 73,002 | 57,555 | 78,050 | 88,671 | 89,886 | 91,281 | 239,993 |
| ■ Chipboard | 0 | 0 | 0 | 31,526 | 15,460 | 2,065 | 2,280 | 0 | 0 | 0 |
| ■ Steel Cans | 15,213 | 2,073 | 8,421 | 13,459 | 20,696 | 10,687 | 11,472 | 3,018 | 3,340 | 6,947 |
| ■ Plastic | 47,219 | 24,769 | 46,085 | 79,285 | 67,658 | 57,216 | 58,592 | 49,385 | 31,973 | 47,437 |
| ■ Scrap Metal | 5,143 | 920 | 8,831 | 11,243 | 5,548 | 3,726 | 4,591 | 7,309 | 6,967 | 14,284 |
| ■ Compost/Mulch | 8,208 | 7,910 | 12,145 | 13,623 | 19,216 | 22,463 | 24,915 | 19,341 | 29,101 | 26,612 |
| ■ Bulk materials | 3,413 | 491 | 12 | 0 | 0 | 53 | 0 | 0 | 0 | 0 |
| ■ Freon | 12 | 57 | 75 | 0 | 0 | 18 | 27 | 0 | 30 | 0 |

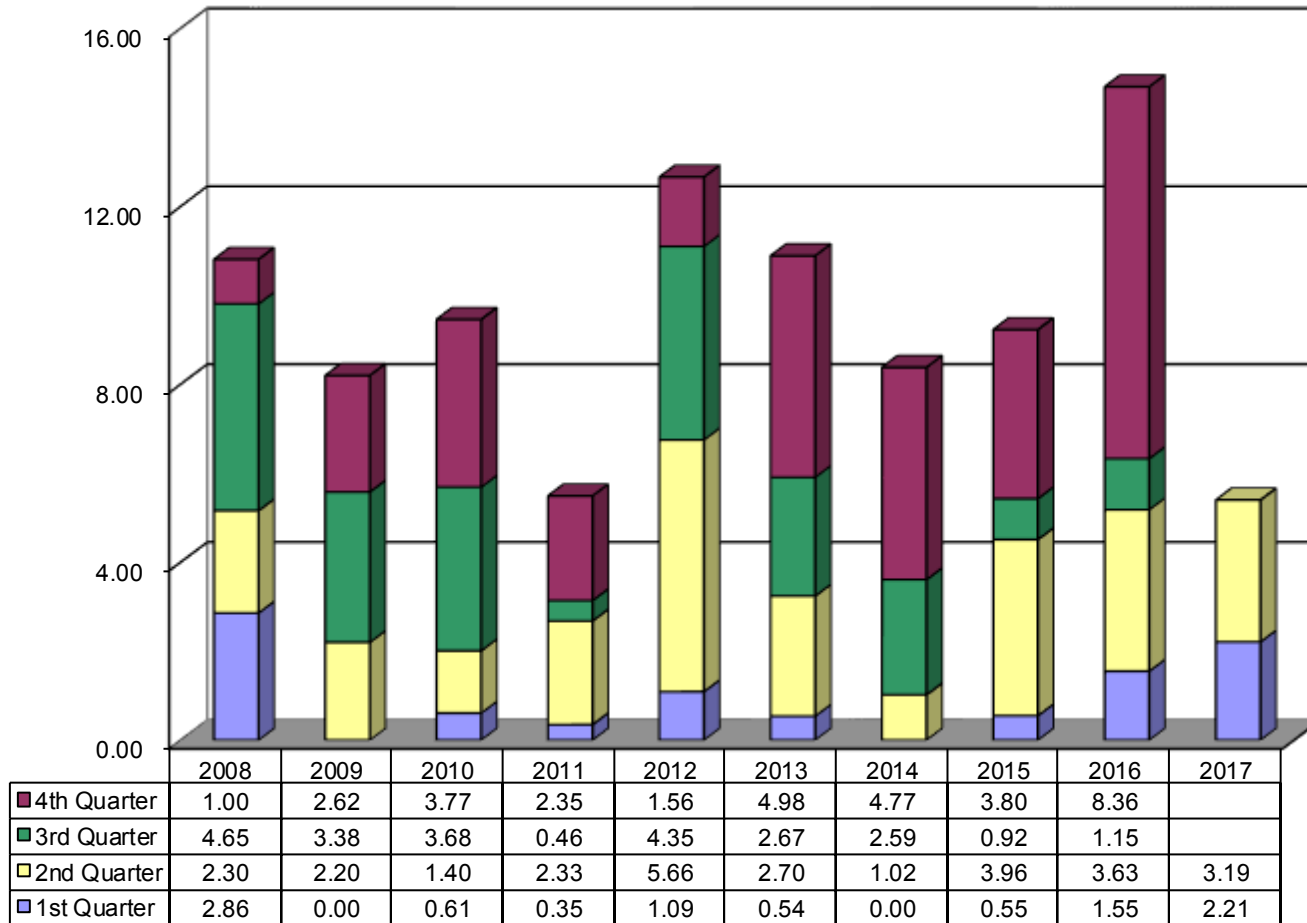
Comment: Commodity prices for fiber were very strong for cardboard and newspaper in the second quarter. Oil prices are still low compared to recent trends and reflects in plastic prices being soft. Newspaper volumes continue to drop due to changing consumer habits. Metal markets are still low and are predicted to stay constant in the near future.

Recycling and Trash Tonnage - Sold by Product Second Quarter



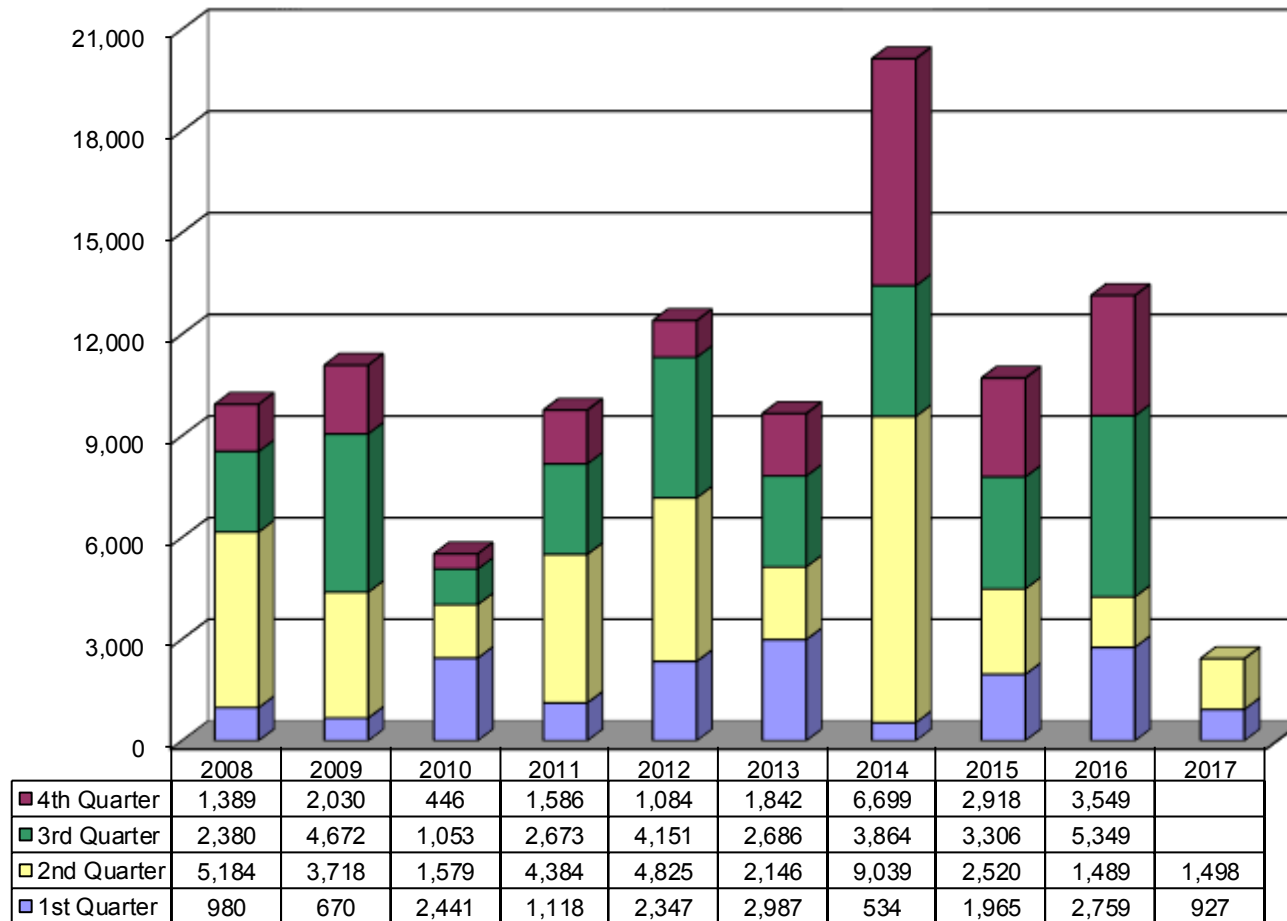
Comment: Joyce Boulevard, Cleveland Street, Leverett Avenue, and Stadium Drive from the annual work plan were paved during the second quarter.

Asphalt Overlay - Miles Completed



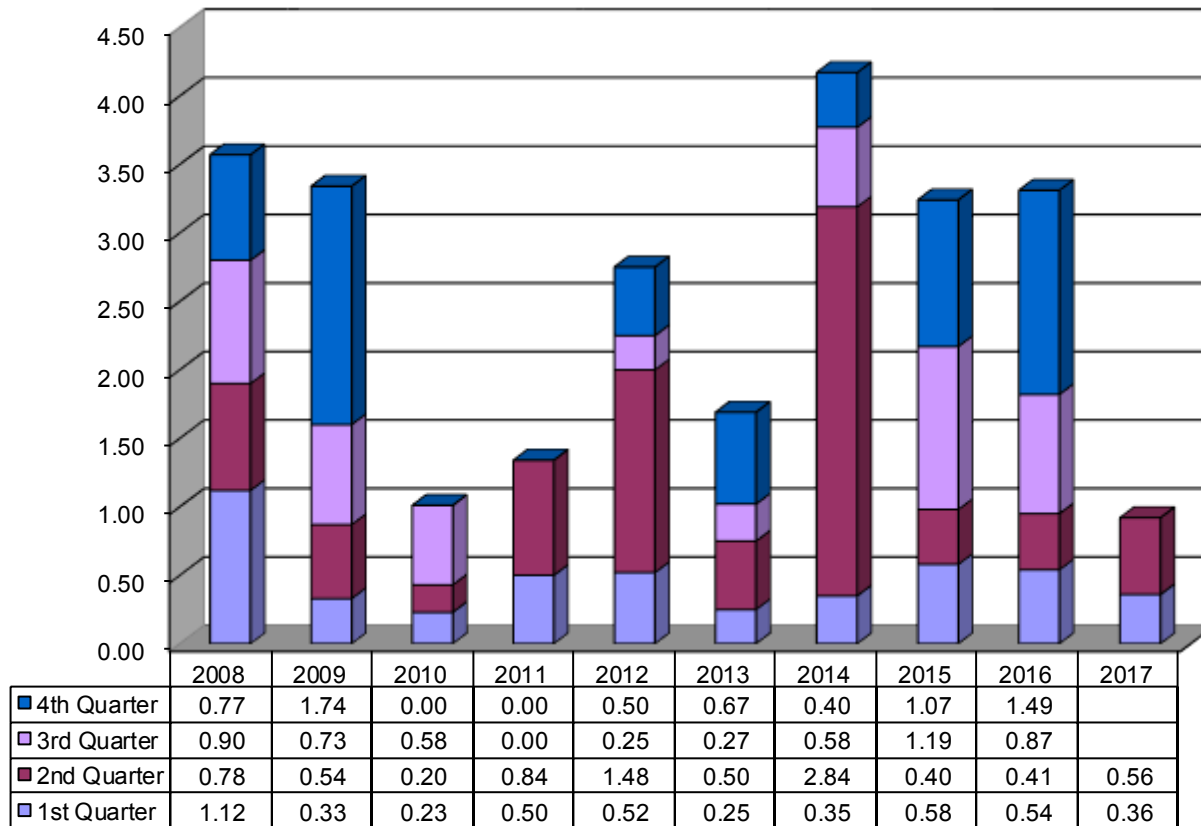
Comment: Sidewalk construction was completed on Gregg Avenue near Elm Street. The first sections of Mt. Comfort Road and College Avenue sidewalks were also completed.

Sidewalk Construction - Linear Feet Completed



Comment: The Cato Springs Trail is under construction and expected to be complete by the end of 2017.

Trails Constructed or in Progress



Transportation Bond Street Improvements (LTD)

June 30, 2017

* Phase I: Oct 2006 - Sept 2009

* Phase III: Nov 2013 - Nov 2024

* Phase II: Oct 2009 - Jan 2014

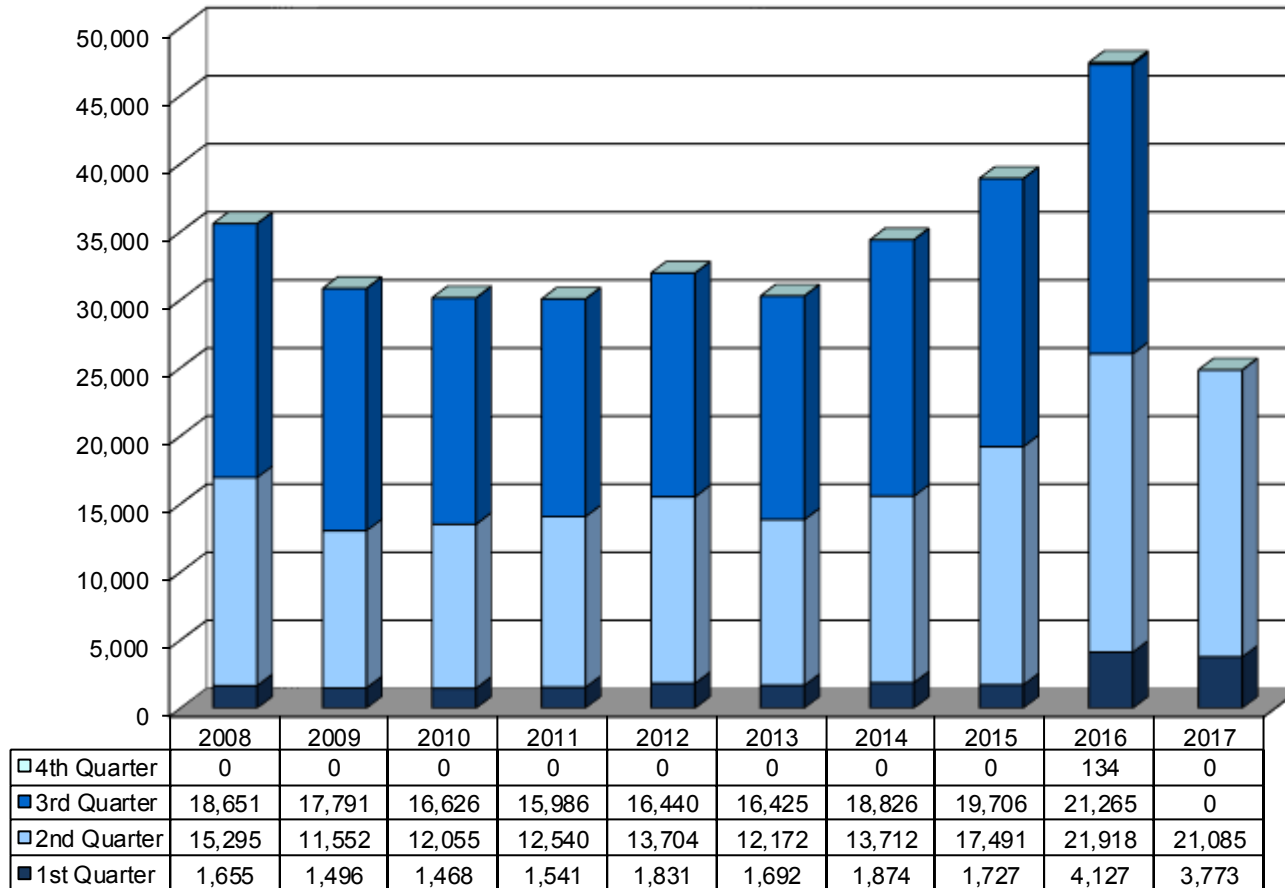
* Phase IV: Nov 2015 - Nov 2024

LTD BUDGET

| Sub Projects | Sales | *Phase I | *Phase II | *Phase III | *Phase IV | Water/ | Total | Expenses | Encumbs | Remaining |
|---|-------------------|-------------------|------------------|-------------------|------------------|------------------|-------------------|-------------------|------------------|------------------|
| | Tax | Trans | Trans | Trans | Trans | Sewer | Budget | | | |
| | L1 | L2 | L3 | L4 | L5 | L6 | | | | |
| Active Projects: | | | | | | | | | | |
| 1 Transportation Bond Street Improvements | - | 120,953 | 39,967 | 449,872 | 4,605,315 | - | 5,216,108 | 737,479 | - | 4,478,629 |
| 1101 Lafayette/Maple Bridges | 1,475,906 | 69,314 | 59,223 | 909,452 | - | - | 2,513,894 | 2,332,915 | 16,487 | 164,493 |
| 1200 Cato Springs Rd.(S.School to Razorback) | 3,145,356 | 1,396,159 | 682,000 | 17,277 | - | 350,000 | 5,590,792 | 5,590,792 | - | - |
| 1700 Fayetteville Expressway EconomicCorridor | 1,568,919 | 338,013 | 153,607 | - | - | - | 2,060,539 | 2,060,539 | - | - |
| 1710 Roundabout Construction | 1,421,881 | 415,493 | - | - | - | - | 1,837,374 | 1,833,649 | - | 3,725 |
| 1720 Fulbright Exp/Hwy 71 Flyover | 4,977,832 | 79,795 | 1,308,354 | 19,764 | - | - | 6,385,744 | 6,385,744 | - | - |
| 2000 Crossover (Mission to City Limits) | - | 5,155,451 | 1,306,265 | 299,910 | - | - | 6,761,626 | 6,749,610 | - | 12,016 |
| 2200 Garland (North to Melmar) | - | 15,155 | - | 3,518,543 | 718,222 | - | 4,251,920 | 4,251,920 | - | - |
| 2250 Garland (North to Melmar) W/S Relocate | 332,472 | - | - | - | - | 1,793,077 | 2,125,550 | 2,114,567 | - | 10,983 |
| 2300 Highway 16 (Armstrong to Stonebridge) | 89,493 | 1,047,838 | 4,019,094 | 311 | - | - | 5,156,736 | 5,156,736 | - | - |
| 2350 Huntsville W/S Relocations | - | 350 | 439,930 | - | - | 1,431,181 | 1,871,461 | 1,871,461 | - | - |
| 2400 Ruppel Road (MLK to Persimmon) | 42,153 | 23,542 | 280,488 | 7,926,213 | 486,034 | - | 8,758,431 | 8,322,322 | 410,813 | 25,296 |
| 2500 Van Asche (Garland to Gregg) | 105,434 | 1,767,426 | 1,658,834 | 1,815,344 | - | - | 5,347,039 | 5,307,501 | - | 39,538 |
| 2600 Old Wire Road (Mission to 265) | 31,518 | - | 19,419 | 1,235,706 | 2,047,999 | 1,358,607 | 4,693,249 | 2,877,290 | 1,519,399 | 296,560 |
| 2700 Zion Road (Vantage to 265) | - | - | 285 | 466,341 | 152,668 | - | 619,294 | 547,118 | 5,548 | 66,628 |
| 2750 Zion Road (Sewer Relocations) | - | - | - | - | - | 90,611 | 90,611 | 44,997 | 45,614 | 1 |
| 2800 Regional Park Access Roads | - | - | - | 1,410,283 | - | - | 1,410,283 | 1,410,283 | - | - |
| 2900 College Ave (Maple to Rebecca) | - | - | 13,876 | 888,670 | 1,000,000 | - | 1,902,546 | 1,112,546 | 230,311 | 559,689 |
| 3000 Intersection Improvements & Pedestrian | 296,931 | - | 606 | - | - | - | 297,537 | 606 | - | 296,931 |
| 3100 Ruppel Rd (BF Lane to Mt. Comfort) | 1,016,516 | - | 10,754 | 204,528 | - | - | 1,231,797 | 404,366 | 458,599 | 368,832 |
| 3200 Razorback Rd (MLK to LeRoy Pond) | 290,000 | - | - | 296,628 | - | - | 586,627 | 586,158 | - | 470 |
| 3300 Ruppel Road (Persimmon to BF Lane) | - | - | - | 2,834,287 | - | - | 2,834,287 | 1,090,893 | 1,729,463 | 13,930 |
| 3400 Sain Street Construction | 420,000 | - | - | 165,165 | - | - | 585,164 | 286,967 | 300,148 | (1,951) |
| 3500 Hwy 112 (Maple) Razorback to Garland | - | - | - | - | - | - | - | 2,620 | - | (2,620) |
| 4000 Cost Shares/Contingency | - | - | - | 186,203 | - | - | 186,203 | 186,203 | - | - |
| Grand Total | 15,214,410 | 10,429,488 | 9,992,700 | 22,644,496 | 9,010,238 | 5,023,475 | 72,314,808 | 61,265,278 | 4,716,381 | 6,333,150 |

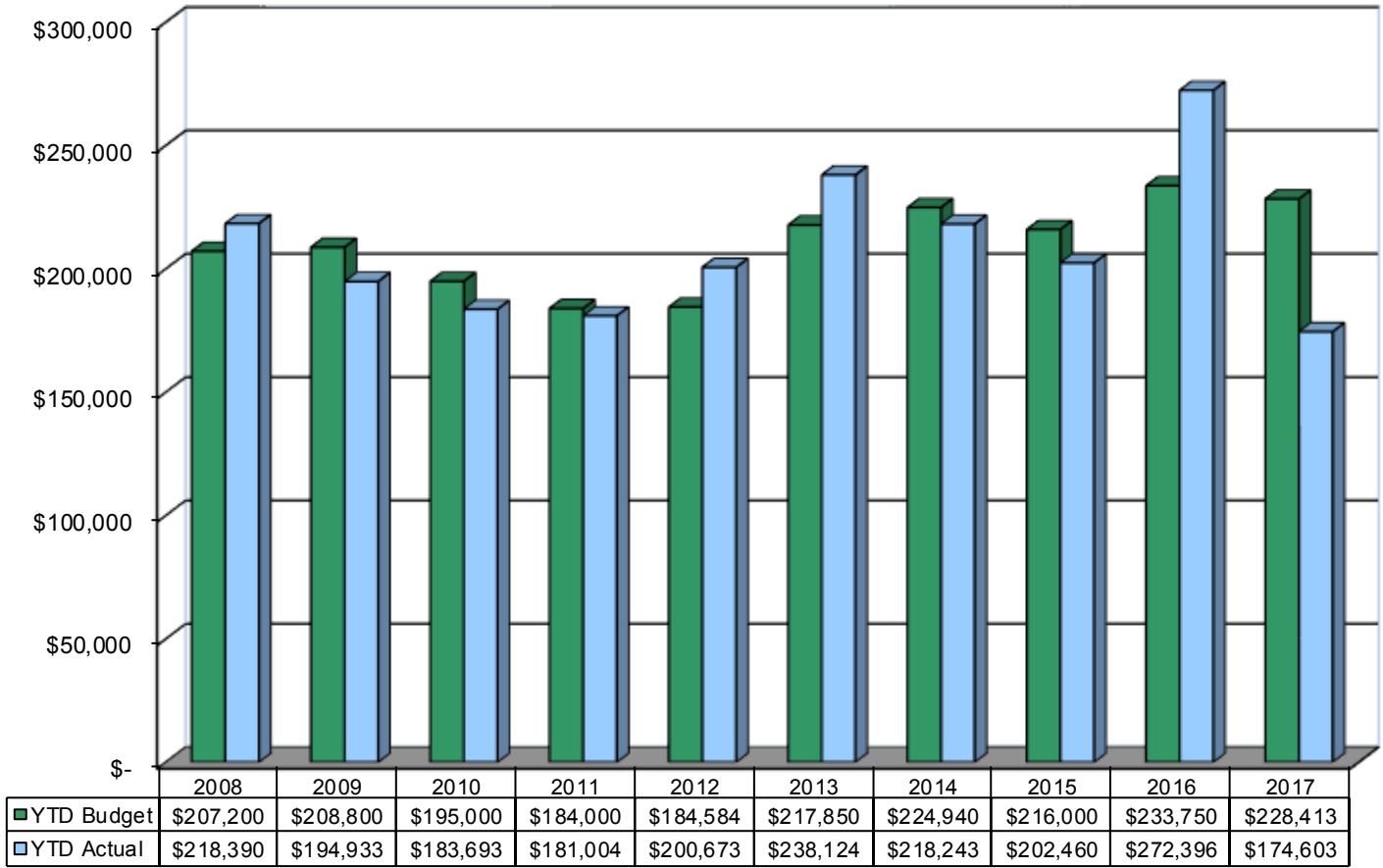
Comment: Year-to-date recreation program participation has decreased slightly in 2017 over the same period in 2016. This is primarily due to: The division is no longer involved in the Cow Paddy Run, the Ladies DU event had lower participation but this was partially offset by an increase in the Square to Square event. This year, Adult Softball has 15 less teams and the Girls Fastpitch Softball was eliminated.

Number of Parks & Recreation Program Participants



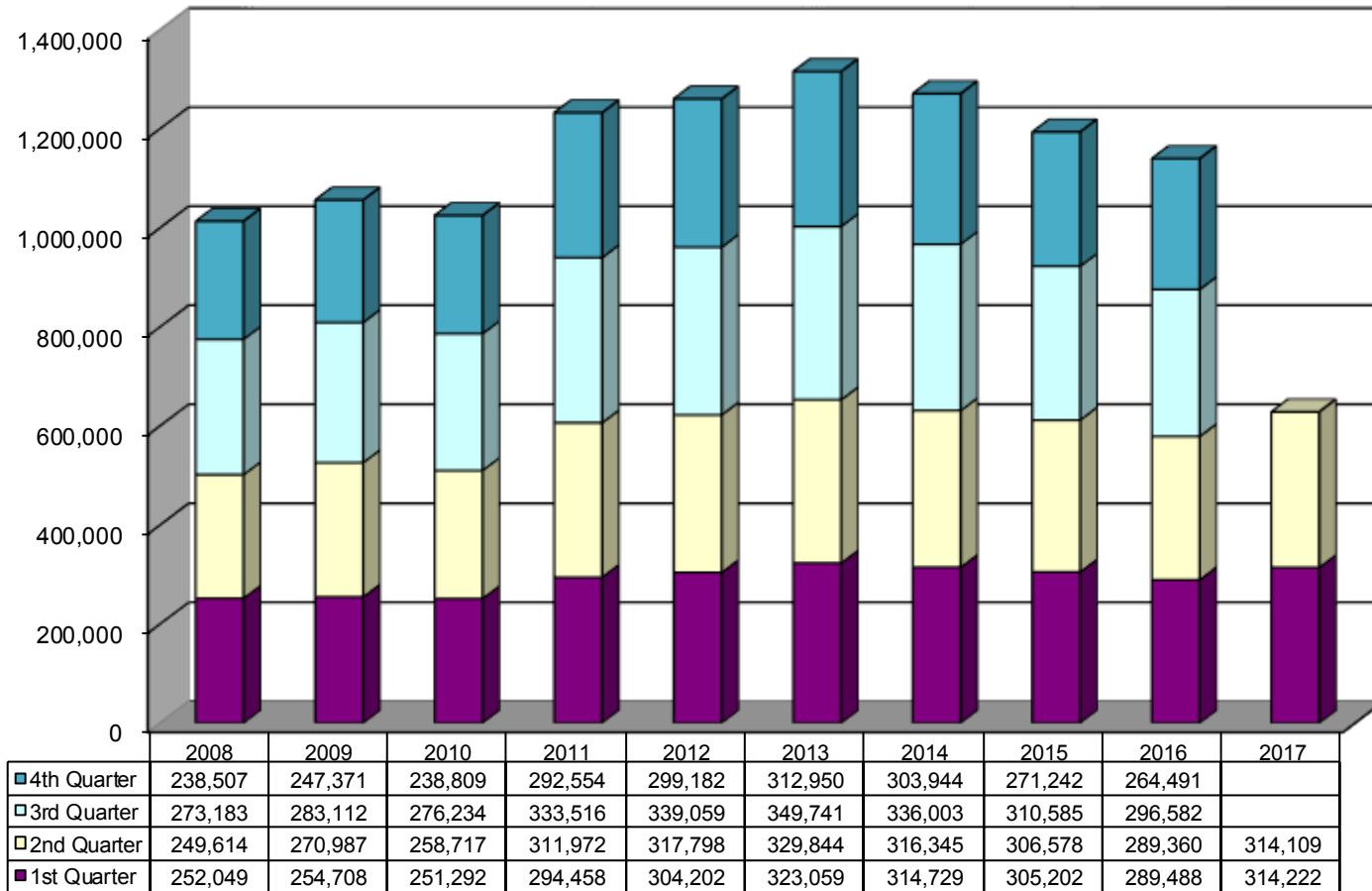
Comment: Year-to-date actual recreation program revenues are below budget primarily due to: Soccer registrations are down, the Girls Fastpitch Softball program was eliminated, participation in the new Youth Ultimate Frisbee has been lower than expected, and Adult Softball has been down slightly. Swimming Pool revenue has been up slightly this year.

Parks & Recreation Program Revenue Year-to-Date



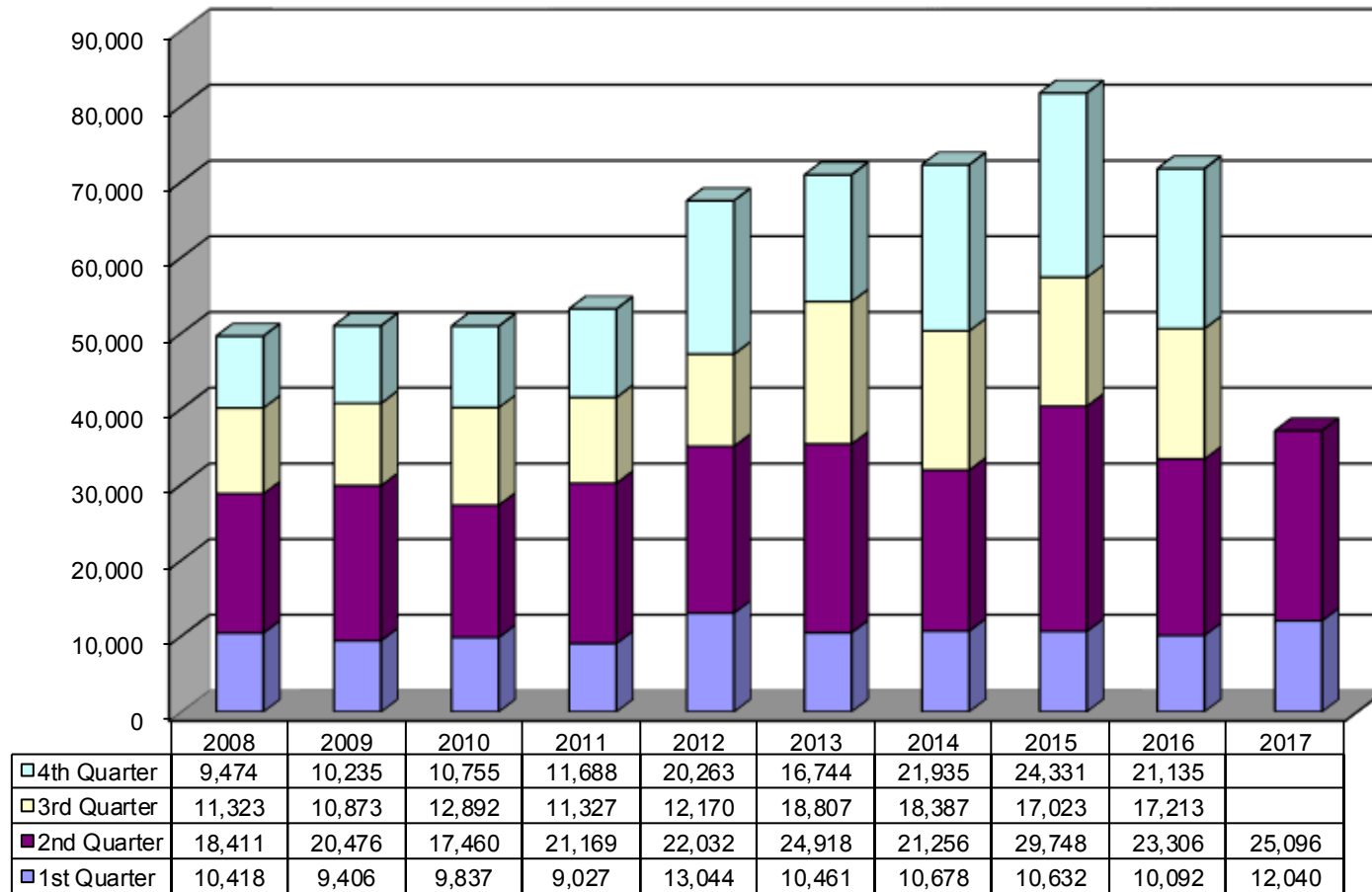
Comment: Digital circs and streamed formats are increasing in proportion of total circs.

Library Check-Outs



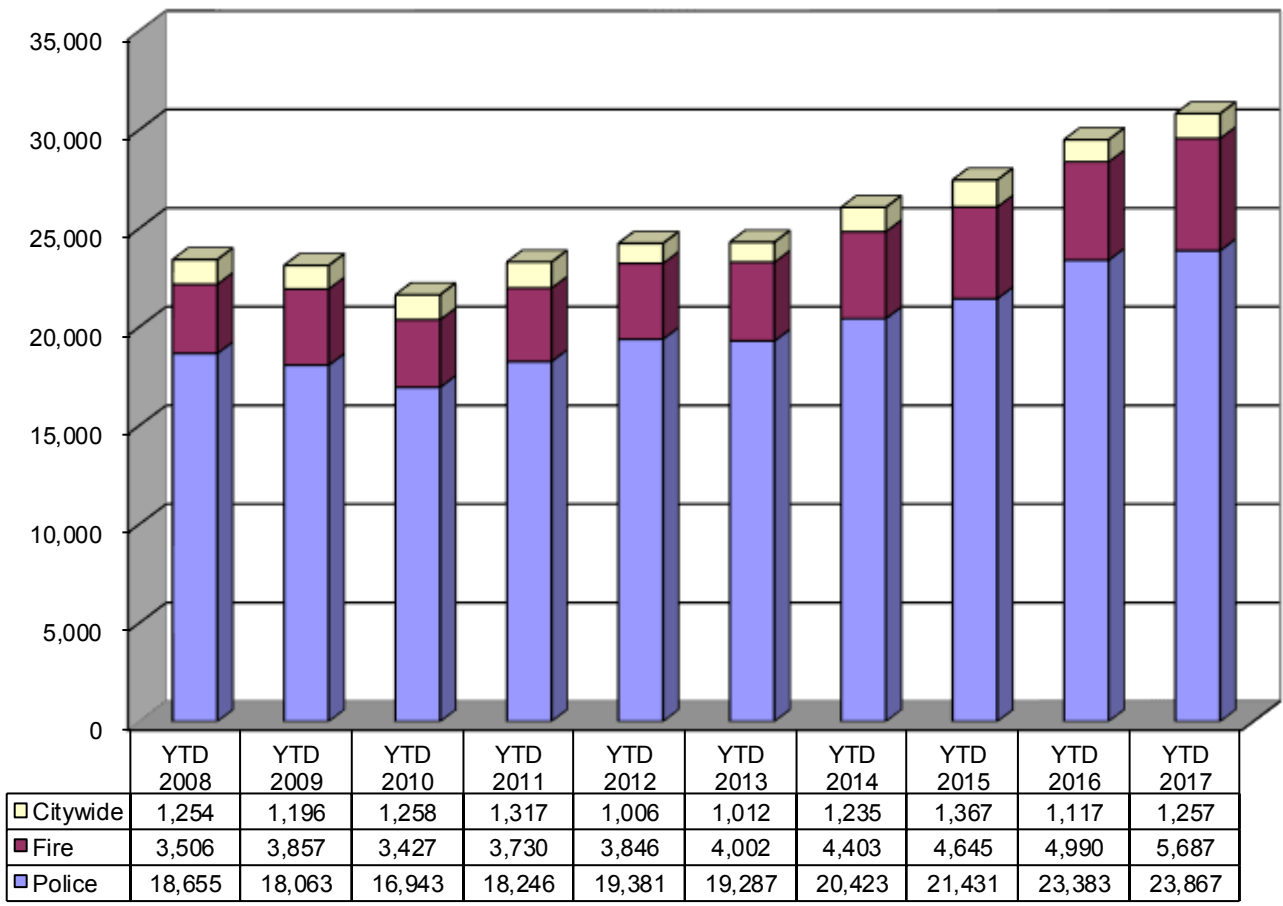
Comment: Program attendance is up over the same period last year.

Library Program Attendees



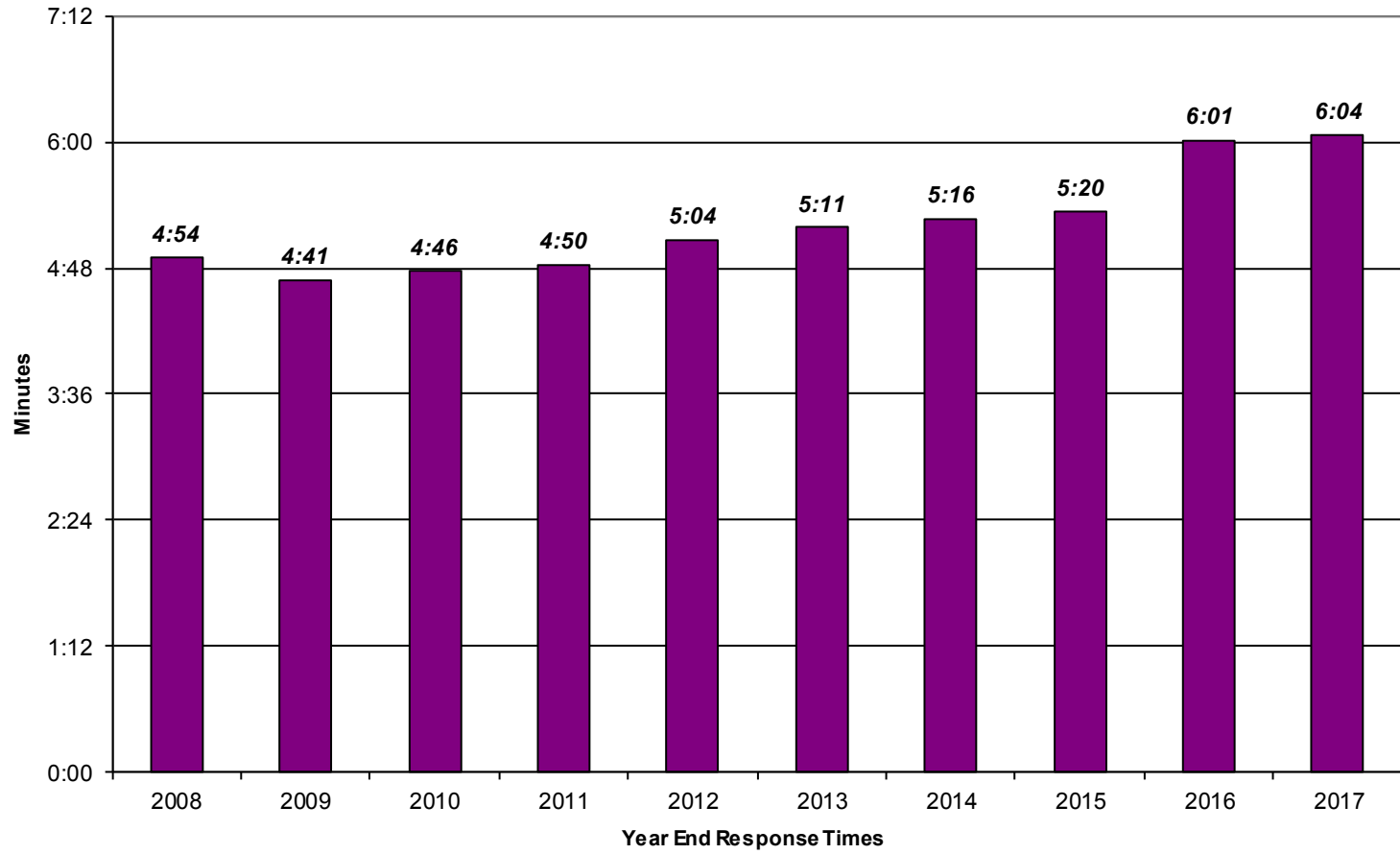
Comment: Citywide calls increased by 9%, fire calls increased by 7% and police calls decreased by 4% this quarter.

Central Dispatch Calls for Service



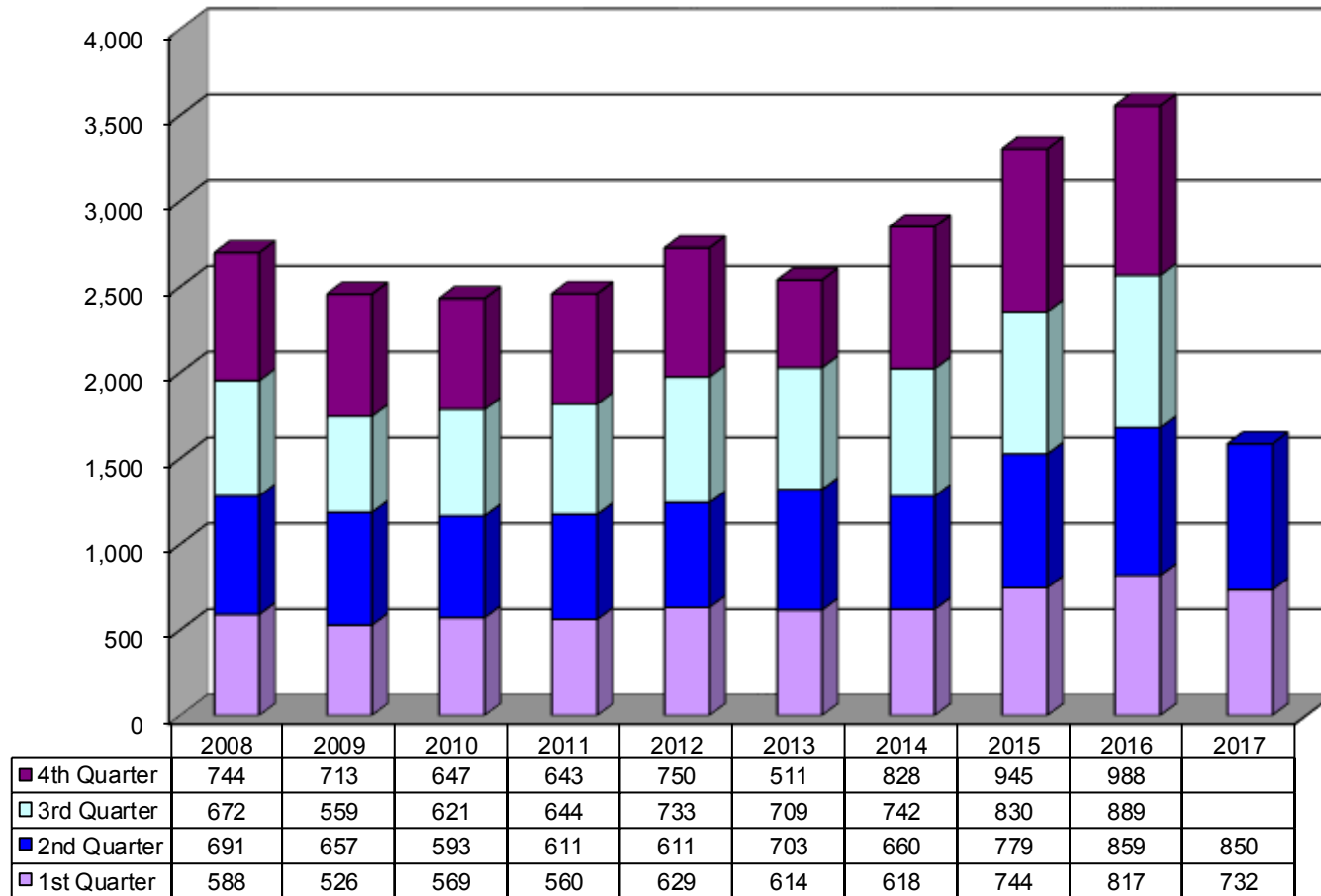
Comment: Response time to priority one calls have had a marginal increase through the first half of 2017 when compared to year end 2016 response times.

Police Emergency Response



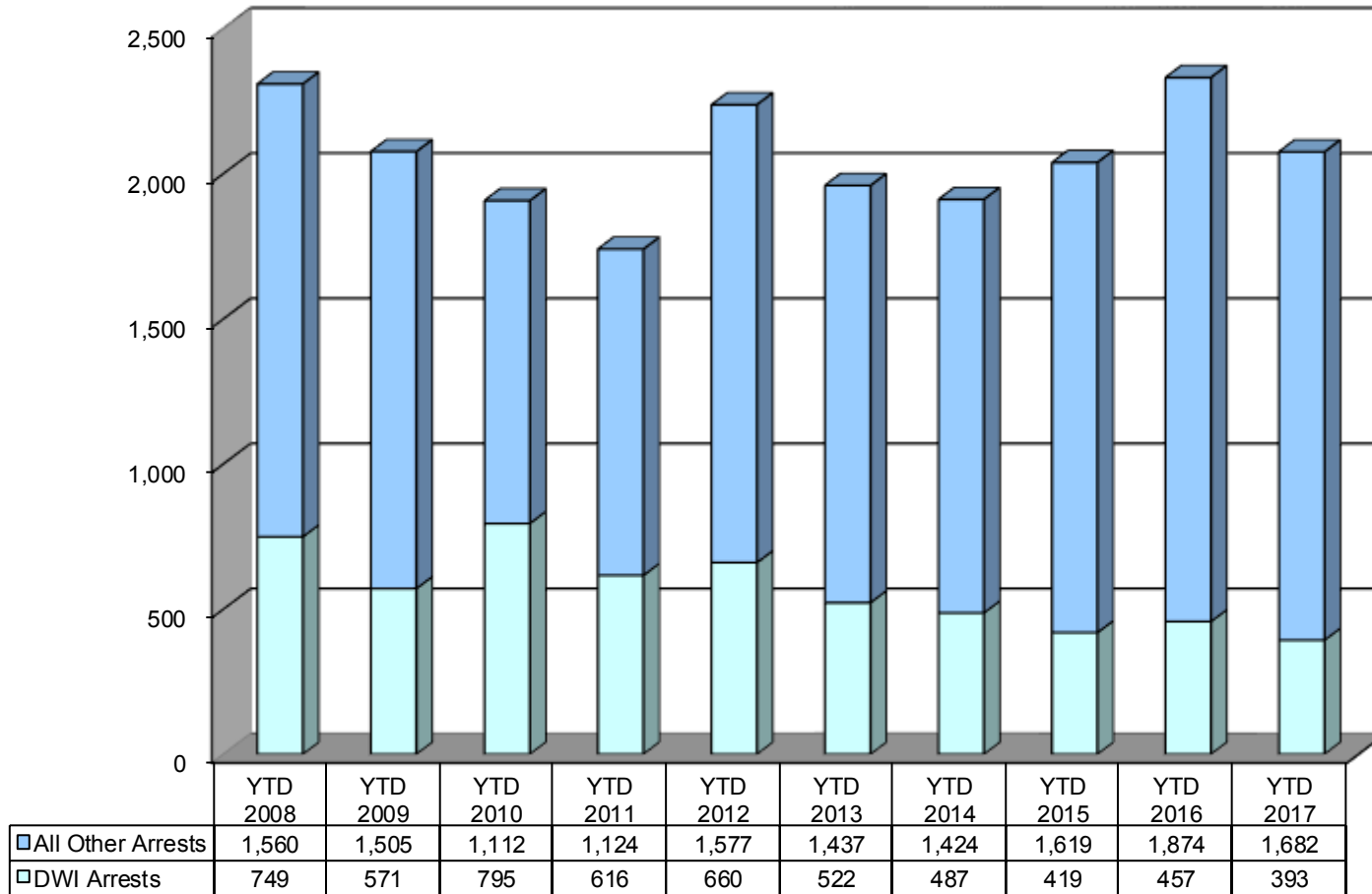
Comment: Accidents decreased 5.61% in 2017 and injury accidents decreased 5.77%. There are many factors affecting these numbers, including but not limited to, traffic enforcement, weather, amount of traffic, and road construction.

Traffic Accidents Worked by Police



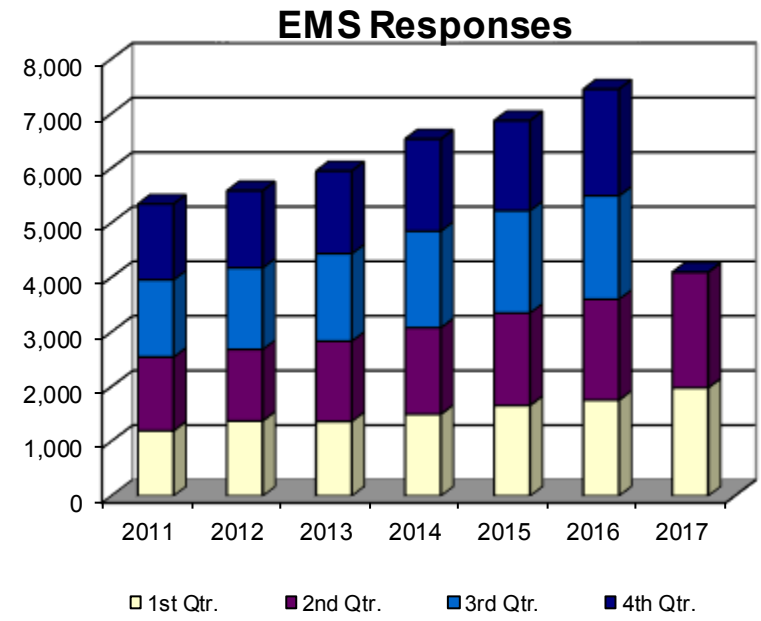
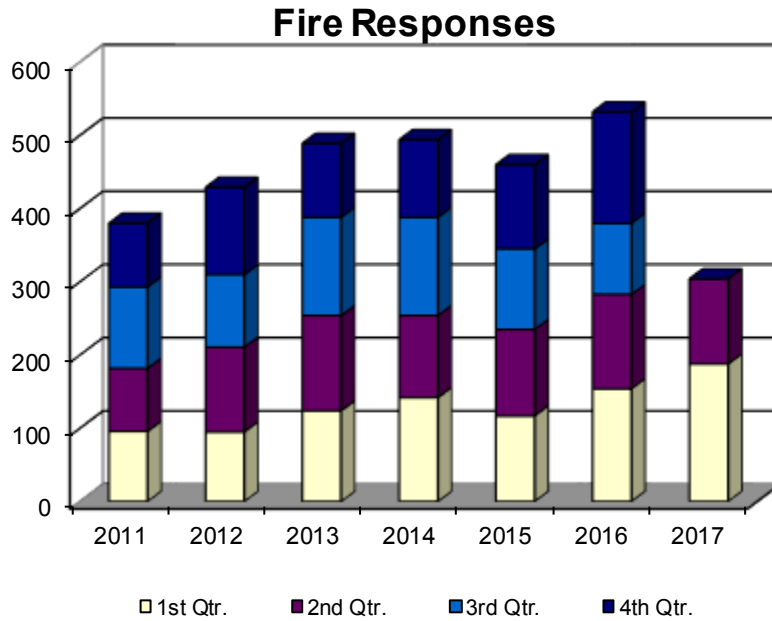
Comment: DWI arrests are down 14.00% and overall custodial arrests are down 10.98% for 2017.

Police Custodial Arrests



Comment: Through the first two quarters, Fire Responses in 2017 are up 7.4% compared to 2016. EMS Responses are up 13.7% in the first two quarters of 2017 compared with the first two quarters of 2016. It is the highest number ever for EMS responses.

Fire Department Annual Calls for Service



Fire Responses

| Year | 1st Qtr. | 2nd Qtr. | 3rd Qtr. | 4th Qtr. |
|------|----------|----------|----------|----------|
| 2011 | 96 | 86 | 111 | 87 |
| 2012 | 95 | 116 | 99 | 119 |
| 2013 | 124 | 130 | 134 | 101 |
| 2014 | 142 | 112 | 134 | 106 |
| 2015 | 117 | 118 | 110 | 115 |
| 2016 | 154 | 129 | 97 | 152 |
| 2017 | 188 | 116 | 0 | 0 |

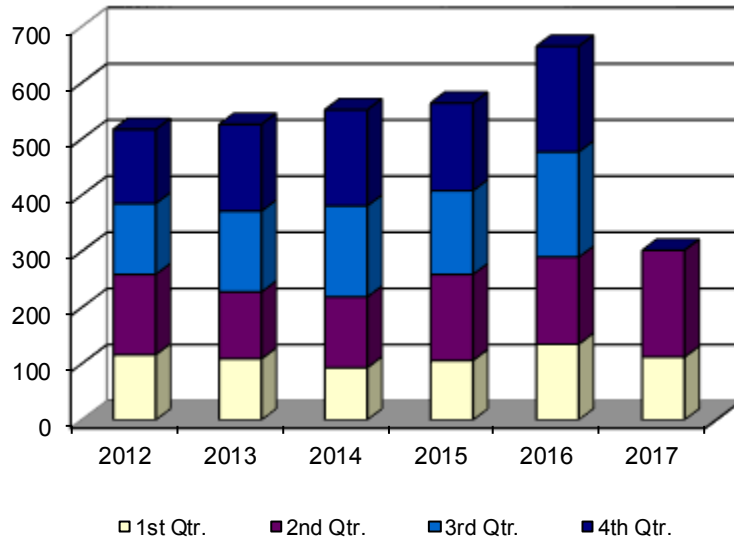
EMS Responses

| Year | 1st Qtr. | 2nd Qtr. | 3rd Qtr. | 4th Qtr. |
|------|----------|----------|----------|----------|
| 2011 | 1,195 | 1,350 | 1,415 | 1,386 |
| 2012 | 1,375 | 1,309 | 1,495 | 1,410 |
| 2013 | 1,367 | 1,468 | 1,602 | 1,514 |
| 2014 | 1,497 | 1,586 | 1,768 | 1,685 |
| 2015 | 1,657 | 1,694 | 1,874 | 1,648 |
| 2016 | 1,756 | 1,848 | 1,894 | 1,951 |
| 2017 | 1,980 | 2,117 | 0 | 0 |

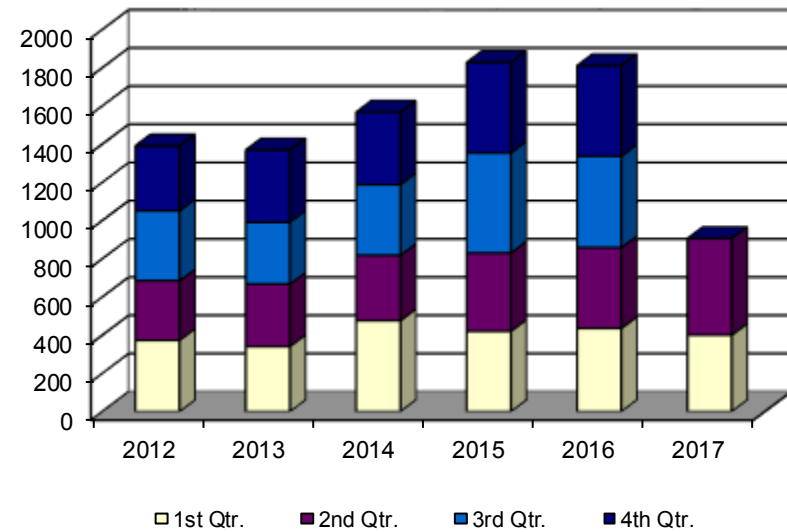
Comment: Rescue Responses are up 4.1% in the first two quarters of 2017 compared with the first two quarters of 2016. Other Responses are up 5.5% in the first two quarters of 2017 compared with the first two quarters of 2016.

Fire Department Annual Calls for Service

Rescue Responses



Other Responses



Rescue Responses

| Year | 1st Qtr. | 2nd Qtr. | 3rd Qtr. | 4th Qtr. |
|------|----------|----------|----------|----------|
| 2012 | 116 | 143 | 126 | 132 |
| 2013 | 109 | 119 | 144 | 154 |
| 2014 | 93 | 126 | 162 | 171 |
| 2015 | 106 | 153 | 149 | 156 |
| 2016 | 135 | 155 | 187 | 188 |
| 2017 | 112 | 190 | 0 | 0 |

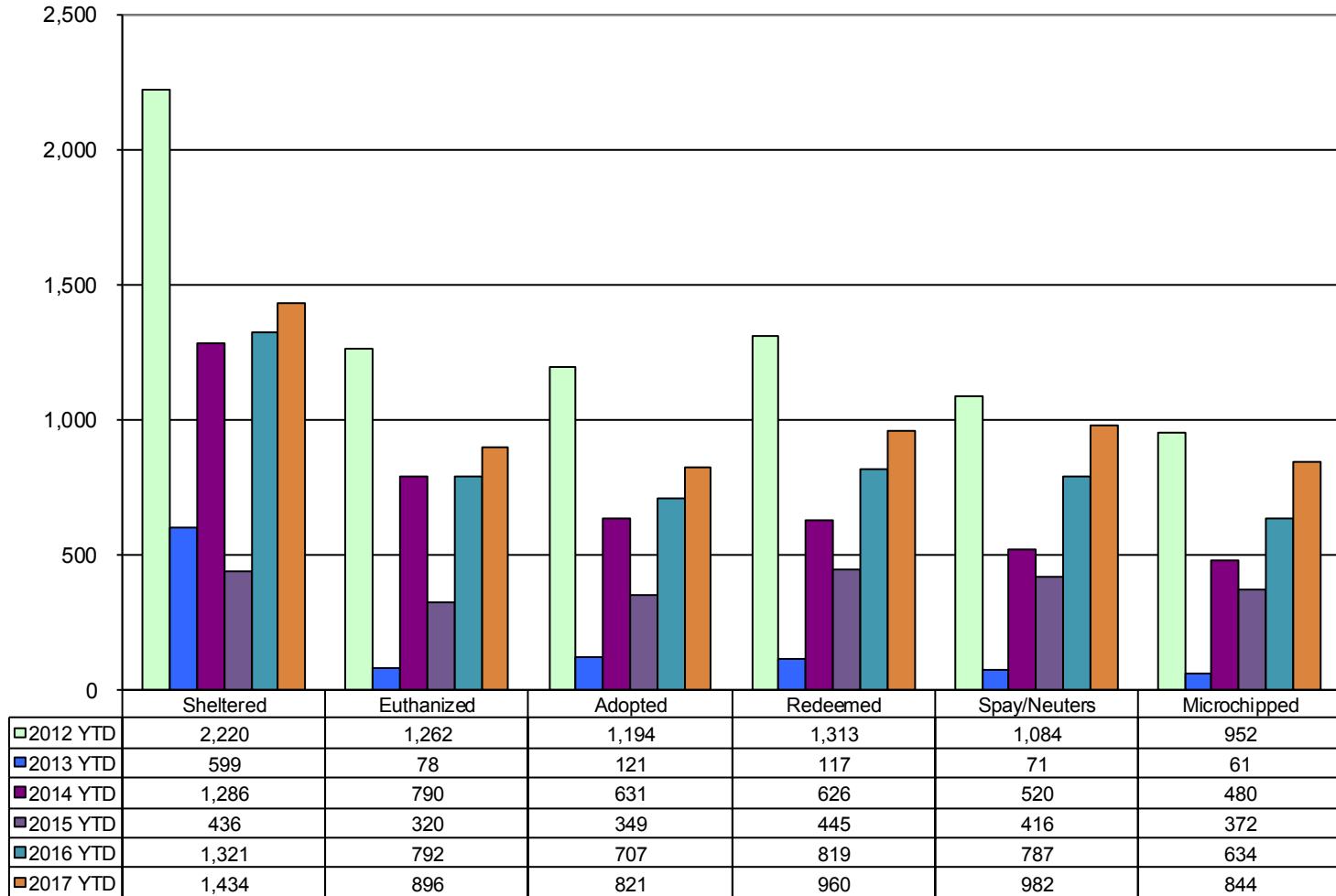
Other Responses*

| Year | 1st Qtr. | 2nd Qtr. | 3rd Qtr. | 4th Qtr. |
|------|----------|----------|----------|----------|
| 2012 | 374 | 311 | 366 | 340 |
| 2013 | 341 | 327 | 323 | 379 |
| 2014 | 477 | 342 | 369 | 380 |
| 2015 | 420 | 411 | 523 | 474 |
| 2016 | 436 | 423 | 478 | 474 |
| 2017 | 401 | 505 | 0 | 0 |

*Other responses consist of services calls, unknown substances, smoke in the area, smoke checks, vehicle accidents with no injury or entrapment, burning complaints, non-reportable haz-mats, or to assist a person.

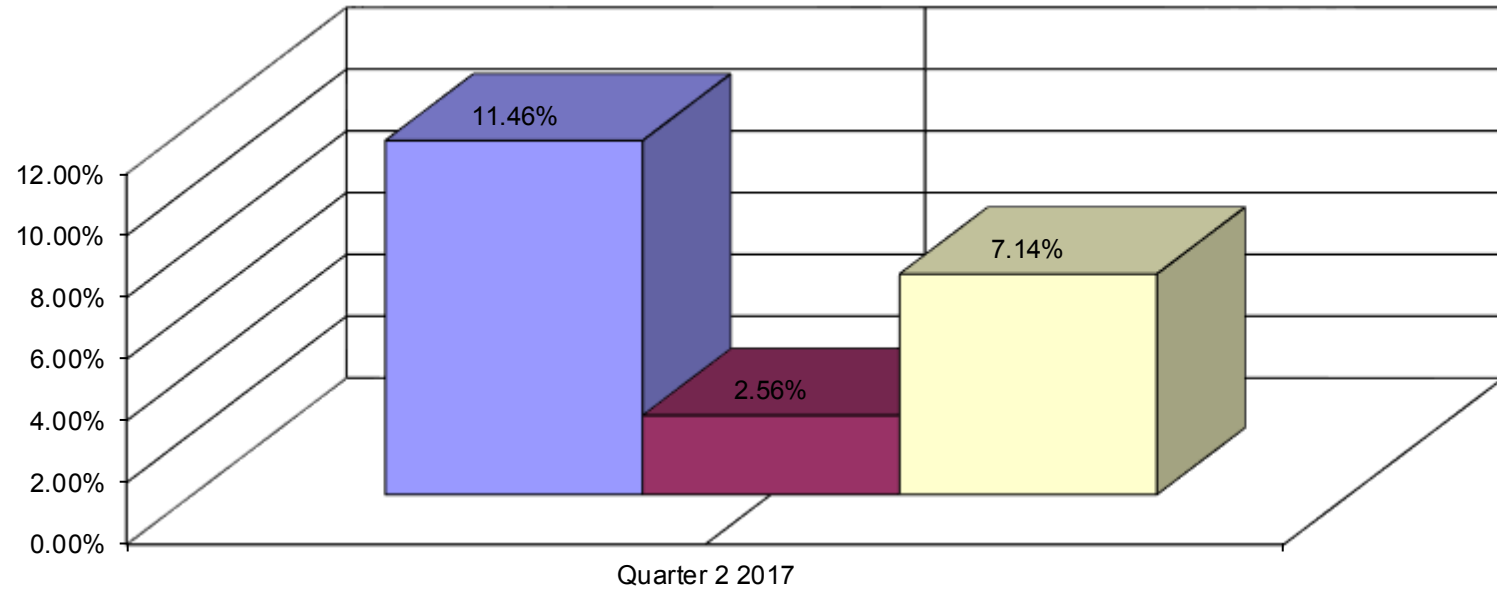
Comment: This is a breakdown of the dogs and cats that enter the shelter system and their ultimate disposition status. All years noted on this graph have been revised to only capture data related to dogs and cats.

Animal Services Population Details Year-To-Date



Comment:

Future turnover figures may increase as our aging workforce retires.

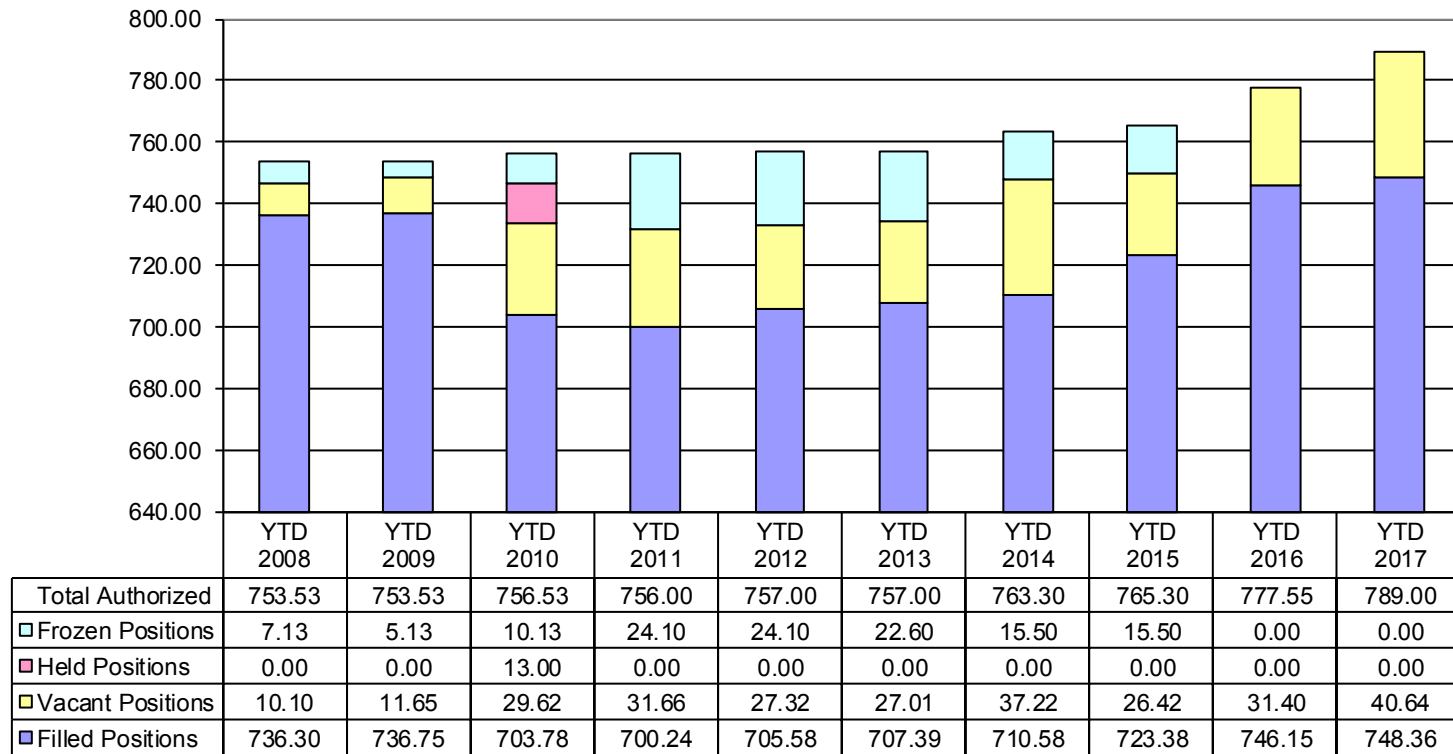


■ PAST: 12 month Lookback Average Turnover ■ PRESENT: 2017 Quarter 2 Turnover □ FUTURE: 12 month Projected Turnover

Projected Future numbers, by definition, assume constant numbers. They do not take into account random headcount fluctuations that oftentimes occur.

Comment: The number of vacant positions has increased when compared to the prior year.

Number of Authorized Employee Positions Compared to Positions Filled (Expressed in FTE's)



Budget Amendment Report - Second Quarter 2017 (Summary)

| FUND | ADOPTED BUDGET | RE-BUDGETS | REVENUES | FUND BALANCE | AMENDED BUDGET |
|-------------------------------------|---------------------------|-------------------|-----------------|-------------------------|---------------------------|
| 1010 General | 43,162,000 | 2,076,340 | - | 4,582,953 | 49,821,293 |
| 2100 Street | 6,804,000 | 1,088,287 | - | 106,200 | 7,998,487 |
| 2130 Parking | 1,922,000 | 81,398 | - | 29,500 | 2,032,898 |
| 2180 Community Development | 927,000 | 1,210,597 | - | 10,800 | 2,148,397 |
| 2230 Special Grants | - | 758,549 | - | - | 758,549 |
| 2250 Parks Development | 3,571,000 | 1,288,372 | - | 300,867 | 5,160,239 |
| 2300 Impact Fee | 1,163,000 | 4,343,971 | - | - | 5,506,971 |
| 2930 Drug Law Enforcement Grant | 498,000 | 143,840 | - | 5,700 | 647,540 |
| 3370 TIF Bonds | 177,000 | - | - | - | 177,000 |
| 3380 Parking Deck Bonds | 385,000 | - | - | - | 385,000 |
| 3390 HMR Tax Bonds 2014 | 710,000 | - | - | - | 710,000 |
| 3440 Sales Tax Capital Imp Bonds | 21,006,000 | - | - | - | 21,006,000 |
| 4270 Disaster & Replacement | 42,000 | 128,769 | - | - | 170,769 |
| 4470 Sales Tax Capital Improvement | 8,542,000 | 13,010,254 | - | 224,684 | 21,776,938 |
| 4520 Sales Tax Construction Project | 5,000 | 10,596,605 | - | - | 10,601,605 |
| 4560 Parking Deck Project | - | 237,211 | - | - | 237,211 |
| 5400 Water and Sewer | 40,525,000 | 21,069,271 | - | 153,700 | 61,747,971 |
| 5500 Recycling and Trash Collection | 11,690,000 | 1,113,894 | - | 81,400 | 12,885,294 |
| 5550 Airport | 2,253,000 | 883,260 | - | 64,000 | 3,200,260 |
| 6800 Police Pension | 1,559,000 | - | - | - | 1,559,000 |
| 6810 Fire Pension | 1,410,000 | - | - | - | 1,410,000 |
| 9700 Shop | 8,812,000 | 4,602,682 | - | 29,300 | 13,443,982 |
| Grand Total | 155,163,000 | 62,633,300 | - | 5,589,104 | 223,385,404 |

Budget Amendment Report - Second Quarter 2017 (Detail)

| FUND | ADOPTED BUDGET | RE-BUDGETS | REVENUES | FUND BALANCE | AMENDED BUDGET |
|---|-------------------|------------------|----------|------------------|-------------------|
| 1010 General | | | | | |
| 00 - ADOPTED BUDGET | 43,162,000 | - | - | - | 43,162,000 |
| 01 - RE-APPROPRIATIONS | - | 2,076,340 | - | - | 2,076,340 |
| 17-015 - To Provide Emergency Funding to the 7 Hill Homeless Center | - | - | - | 150,000 | 150,000 |
| 17-027 - Donation from Bank of Fay/Merchants | - | - | - | 1,000 | 1,000 |
| 17-050 - Assist Theatre2 with Building Construction | - | - | - | 3,100,000 | 3,100,000 |
| 17-051 - 2017 Employee Compensation Adjustments | - | - | - | 1,213,000 | 1,213,000 |
| 17-052 - Video Arraignment Equipment for Court | - | - | - | 10,000 | 10,000 |
| 17-053 - Animal Services Donations | - | - | - | 10,777 | 10,777 |
| 17-054 - Park Donations | - | - | - | 1,955 | 1,955 |
| 17-081 - Recognize Haz-Mat Revenue from Washington County | - | - | - | 11,319 | 11,319 |
| 17-107 - Video Surveillance & Access Control Systems for Court | - | - | - | 30,000 | 30,000 |
| 17-125 - Scholarship from NIGP for 2017 National Forum | - | - | - | 2,500 | 2,500 |
| 17-149 - ASP Grant Award - Legistar 2017-0280 | - | - | - | 24,160 | 24,160 |
| 17-150 - Trail of Tears Mural Tsa La Gi Trail Legistar 2017-0265 | - | - | - | 5,000 | 5,000 |
| 17-151 - 265 W Nonnamaker Ave Raze/Removal Legistar 2017-0237 | - | - | - | 1,251 | 1,251 |
| 17-152 - Historic Preservation Grant 17-CLG-04 Legistar 2017-0289 | - | - | - | 14,291 | 14,291 |
| 17-153 - Police Donations Legistar 2017-0283 | - | - | - | 7,700 | 7,700 |
| 1010 General Total | 43,162,000 | 2,076,340 | - | 4,582,953 | 49,821,293 |
| 2100 Street | | | | | |
| 00 - ADOPTED BUDGET | 6,804,000 | - | - | - | 6,804,000 |
| 01 - RE-APPROPRIATIONS | - | 1,088,287 | - | - | 1,088,287 |
| 17-051 - 2017 Employee Compensation Adjustments | - | - | - | 106,200 | 106,200 |
| 2100 Street Total | 6,804,000 | 1,088,287 | - | 106,200 | 7,998,487 |
| 2130 Parking | | | | | |
| 00 - ADOPTED BUDGET | 1,922,000 | - | - | - | 1,922,000 |
| 01 - RE-APPROPRIATIONS | - | 81,398 | - | - | 81,398 |
| 17-051 - 2017 Employee Compensation Adjustments | - | - | - | 29,500 | 29,500 |
| 2130 Parking Total | 1,922,000 | 81,398 | - | 29,500 | 2,032,898 |

Budget Amendment Report - Second Quarter 2017 (Detail)

| FUND | ADOPTED BUDGET | RE-BUDGETS | REVENUES | FUND BALANCE | AMENDED BUDGET |
|---|------------------|------------------|----------|----------------|------------------|
| 2180 Community Development | | | | | |
| 00 - ADOPTED BUDGET | 927,000 | - | - | - | 927,000 |
| 01 - RE-APPROPRIATIONS | - | 1,210,597 | - | - | 1,210,597 |
| 17-051 - 2017 Employee Compensation Adjustments | - | - | - | 10,800 | 10,800 |
| 2180 Community Development Total | 927,000 | 1,210,597 | - | 10,800 | 2,148,397 |
| 2230 Special Grants | | | | | |
| 01 - RE-APPROPRIATIONS | - | 758,549 | - | - | 758,549 |
| 2230 Special Grants Total | - | 758,549 | - | - | 758,549 |
| 2250 Parks Development | | | | | |
| 00 - ADOPTED BUDGET | 3,571,000 | - | - | - | 3,571,000 |
| 01 - RE-APPROPRIATIONS | - | 1,288,372 | - | - | 1,288,372 |
| 17-026 - Walton Family Foundation Grant for Kessler Mountain Trails | - | - | - | 210,000 | 210,000 |
| 17-051 - 2017 Employee Compensation Adjustments | - | - | - | 56,500 | 56,500 |
| 17-054 - Park Donations | - | - | - | 3,590 | 3,590 |
| 17-106 - Change Order #3 T-N-T Contract Road Base Fill | - | - | - | 30,777 | 30,777 |
| 2250 Parks Development Total | 3,571,000 | 1,288,372 | - | 300,867 | 5,160,239 |
| 2300 Impact Fee | | | | | |
| 00 - ADOPTED BUDGET | 1,163,000 | - | - | - | 1,163,000 |
| 01 - RE-APPROPRIATIONS | - | 4,343,971 | - | - | 4,343,971 |
| 2300 Impact Fee Total | 1,163,000 | 4,343,971 | - | - | 5,506,971 |
| 2930 Drug Law Enforcement Grant | | | | | |
| 00 - ADOPTED BUDGET | 498,000 | - | - | - | 498,000 |
| 01 - RE-APPROPRIATIONS | - | 143,840 | - | - | 143,840 |
| 17-051 - 2017 Employee Compensation Adjustments | - | - | - | 5,700 | 5,700 |
| 2930 Drug Law Enforcement Grant Total | 498,000 | 143,840 | - | 5,700 | 647,540 |
| 3370 TIF Bonds | | | | | |
| 00 - ADOPTED BUDGET | 177,000 | - | - | - | 177,000 |
| 3370 TIF Bonds Total | 177,000 | - | - | - | 177,000 |

Budget Amendment Report - Second Quarter 2017 (Detail)

| FUND | ADOPTED BUDGET | RE-BUDGETS | REVENUES | FUND BALANCE | AMENDED BUDGET |
|--|-------------------|-------------------|----------|-----------------|-------------------|
| 3380 Parking Deck Bonds | | | | | |
| 00 - ADOPTED BUDGET | 385,000 | - | - | - | 385,000 |
| 3380 Parking Deck Bonds Total | 385,000 | - | - | - | 385,000 |
| 3390 HMR Tax Bonds 2014 | | | | | |
| 00 - ADOPTED BUDGET | 710,000 | - | - | - | 710,000 |
| 3390 HMR Tax Bonds 2014 Total | 710,000 | - | - | - | 710,000 |
| 3440 Sales Tax Capital Imp Bonds | | | | | |
| 00 - ADOPTED BUDGET | 21,006,000 | - | - | - | 21,006,000 |
| 3440 Sales Tax Capital Imp Bonds Total | 21,006,000 | - | - | - | 21,006,000 |
| 4270 Disaster & Replacement | | | | | |
| 00 - ADOPTED BUDGET | 42,000 | - | - | - | 42,000 |
| 01 - RE-APPROPRIATIONS | - | 128,769 | - | - | 128,769 |
| 4270 Disaster & Replacement Total | 42,000 | 128,769 | - | - | 170,769 |
| 4470 Sales Tax Capital Improvement | | | | | |
| 00 - ADOPTED BUDGET | 8,542,000 | - | - | - | 8,542,000 |
| 01 - RE-APPROPRIATIONS | - | 13,010,254 | - | - | 13,010,254 |
| 17-097 - Benchmark Construction Contract for the Fire Training Grounds | - | - | - | 224,684 | 224,684 |
| 4470 Sales Tax Capital Improvement Total | 8,542,000 | 13,010,254 | - | 224,684 | 21,776,938 |
| 4520 Sales Tax Construction Project | | | | | |
| 00 - ADOPTED BUDGET | 5,000 | - | - | - | 5,000 |
| 01 - RE-APPROPRIATIONS | - | 10,596,605 | - | - | 10,596,605 |
| 4520 Sales Tax Construction Project Total | 5,000 | 10,596,605 | - | - | 10,601,605 |
| 4560 Parking Deck Project | | | | | |
| 01 - RE-APPROPRIATIONS | - | 237,211 | - | - | 237,211 |
| 4560 Parking Deck Project Total | - | 237,211 | - | - | 237,211 |

Budget Amendment Report - Second Quarter 2017 (Detail)

| FUND | ADOPTED BUDGET | RE-BUDGETS | REVENUES | FUND BALANCE | AMENDED BUDGET |
|--|--------------------|-------------------|----------|------------------|--------------------|
| 5400 Water and Sewer | | | | | |
| 00 - ADOPTED BUDGET | 40,525,000 | - | - | - | 40,525,000 |
| 01 - RE-APPROPRIATIONS | - | 21,069,271 | - | - | 21,069,271 |
| 17-051 - 2017 Employee Compensation Adjustments | - | - | - | 153,700 | 153,700 |
| 5400 Water and Sewer Total | 40,525,000 | 21,069,271 | - | 153,700 | 61,747,971 |
| 5500 Recycling and Trash Collection | | | | | |
| 00 - ADOPTED BUDGET | 11,690,000 | - | - | - | 11,690,000 |
| 01 - RE-APPROPRIATIONS | - | 1,113,894 | - | - | 1,113,894 |
| 17-051 - 2017 Employee Compensation Adjustments | - | - | - | 81,400 | 81,400 |
| 5500 Recycling and Trash Collection Total | 11,690,000 | 1,113,894 | - | 81,400 | 12,885,294 |
| 5550 Airport | | | | | |
| 00 - ADOPTED BUDGET | 2,253,000 | - | - | - | 2,253,000 |
| 01 - RE-APPROPRIATIONS | - | 883,260 | - | - | 883,260 |
| 17-002 - Engineering for Taxiway B Widening | - | - | - | 49,800 | 49,800 |
| 17-051 - 2017 Employee Compensation Adjustments | - | - | - | 14,200 | 14,200 |
| 5550 Airport Total | 2,253,000 | 883,260 | - | 64,000 | 3,200,260 |
| 6800 Police Pension | | | | | |
| 00 - ADOPTED BUDGET | 1,559,000 | - | - | - | 1,559,000 |
| 6800 Police Pension Total | 1,559,000 | - | - | - | 1,559,000 |
| 6810 Fire Pension | | | | | |
| 00 - ADOPTED BUDGET | 1,410,000 | - | - | - | 1,410,000 |
| 6810 Fire Pension Total | 1,410,000 | - | - | - | 1,410,000 |
| 9700 Shop | | | | | |
| 00 - ADOPTED BUDGET | 8,812,000 | - | - | - | 8,812,000 |
| 01 - RE-APPROPRIATIONS | - | 4,602,682 | - | - | 4,602,682 |
| 17-051 - 2017 Employee Compensation Adjustments | - | - | - | 29,300 | 29,300 |
| 9700 Shop Total | 8,812,000 | 4,602,682 | - | 29,300 | 13,443,982 |
| Grand Total | 155,163,000 | 62,633,300 | - | 5,589,104 | 223,385,404 |