

CITY OF
Fayetteville
ARKANSAS

NEWSLETTER

2016
VOL. 11, NO. 1



City Publishes Invasive Species Guide

Spring weather arrived early this year and planting season is here. The City of Fayetteville wants to remind residents and businesses to reference the City's *Invasive Species Educational Information* packet when making choices about what species to plant.

Eighteen invasive species were identified by a group of local stakeholders – including botanists, nursery owners, horticulturists, landscape architects, community members, and City staff. The stakeholder group recognized the need to provide educational materials to the general public and worked with City staff to create an informational packet about how to identify, remove, and replace invasive plants with native or non-invasive equivalents.

On November 3, 2015, City Council adopted Ordinance 5820 amending the Unified Development Code Chapter 177: Landscape Regulations to adopt regulations prohibiting the installation of eighteen invasive plant species in developments that require landscape plan review and approval by the Urban Forestry Division.

Also in November of 2015, Mayor Lionel Jordan committed to aiding in the effort of restoring habitats for monarch butterflies through the Mayor's Monarch Pledge with the National Wildlife Federation. Creating a habitat where monarchs will flourish includes planting pollinator species as food; some of the region's native pollinator species are identified in the *Invasive Species Educational Information* packet.

The City of Fayetteville's Urban Forestry Division management practices focus on providing an urban forest that is safe, healthy, diverse, and able to provide the greatest benefit to the people, wildlife and environment of the City. In addition to the packet, the Urban Forestry staff maintains online resources such as tree care tips and information on proper tree mulching technique. Check out all the resources and packet [here](#).

BRADFORD PEAR

Pyrus calleryana

INVASIVE



FLOWER

FORM

FALL

HOW TO IDENTIFY : Showy white foul-smelling flowers blooming in early spring. Oval, glossy, dark green alternate leaves with pointed tip turning purplish-red in fall.

HOW TO REMOVE : Cut tree down to stump and apply appropriate herbicide.

NEGATIVE IMPACTS : Competes for natural resources, invades urban and forested areas, shading out other native species and inhibiting forest regeneration. Seeds widely dispersed by birds.

YELLOW - WOOD

Cladrastis kentukea

NATIVE
ALTERNATIVE



FLOWER

FORM

FALL

LANDSCAPE VALUE : Showy fragrant flowers in spring with beautiful fall color.

OTHER NON-INVASIVE ALTERNATIVES : Flowering Dogwood (*Cornus florida*), Fringe Tree (*Chionanthus virginicus*), Two-Winged Silverbell (*Galeola dipthera*), Eastern Swampprivet (*Forsythera acuminata*), American Snowbell (*Styrax americana*), Serviceberry (*Amelanchier arborea*), Cockspar Hawthorn (*Crotaegus cres-galli*), Sweet Crabapple (*Malus coronaria*), Prairie Crabapple (*Malus ioensis*)

CHARACTERISTICS

DECIDUOUS
SIZE : 30' - 50'
HARDINESS : Zone 5 - 9
GROWTH RATE : Rapid



CHARACTERISTICS

DECIDUOUS
SIZE : 30' - 50'
HARDINESS : Zone 4 - 8
GROWTH RATE : Medium



How to Plant Containerized Trees

These instructions are for planting containerized trees or shrubs.



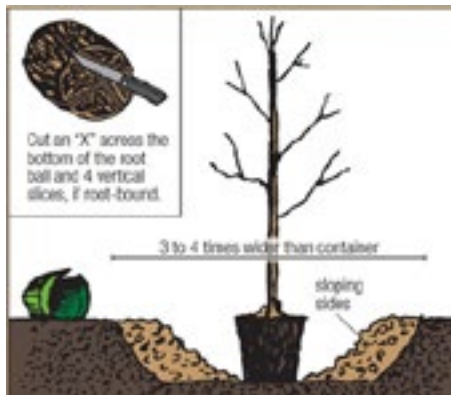
Before digging, call Arkansas One Call at 811 or 800-482-8998 to verify you've chosen a safe location.

To reduce summer cooling costs, plant large deciduous shade trees on the east, west, or southwest sides of your home. Plant evergreens on the north or the side with prevailing winds.

Dig a hole 3 to 4 times wider than the container. The hole should have sloping sides like a saucer to allow for proper root growth.

Carefully remove the tree from the container keeping the soil around the roots intact. It helps to tap the outside of the container to loosen the edge. Carefully slide the tree from the container. Don't yank the tree out of the container as this can separate the roots from the tree.

Sometimes containerized trees become root-bound or the roots look like they're about to circle the root ball. If your tree is like this, cut an X across the bottom of the root ball and four vertical slices along the sides of the root ball with a sharp knife.



Set the tree in the middle of the hole. Avoid planting the tree too deep. If the root collar sits below the top of the hole, compact some soil under the tree so that the root flare at the

base of the trunk is slightly above ground level. Using some soil, secure the tree in a straight position, then fill and firmly pack the hole with the original soil, making sure there aren't any air pockets. Keep backfilling until the soil is just below the root collar.

Create a water-holding basin around the hole and give the tree a good watering. After the water has soaked in, spread protective mulch 2-4" deep and level in a 3-foot diameter area around the tree. Keep mulch 2" away from tree trunk.

The soil and mulch around your trees should be kept moist but not soggy. During dry weather, generously water the tree every 7 to 10 days during the first year. Water slowly at the dripline.

Remove any tags and labels from the tree as these will affect the tree as it grows. For future pruning info, visit

<http://www.arboday.org/trees/pruning/>



Optional: If you like your new tree, send a photo of you and your tree to urban_forestry@fayetteville-ar.gov. We might put it on the City's website to help encourage others to plant as well.

Fertilizer? *Do not* use fertilizer, potting soil, or chemicals on your newly planted trees.

Watering: Keeping your trees watered is important during their first year. Keep the soil and mulch moist but not soggy. In dry weather, you should water generously every 7-10 days. Avoid watering so much that you see standing water.

The Urban Forestry Advisory Board encourages the use of native plants because they tend to grow more easily in local conditions and typically provide the most benefit to local birds, bees, butterflies, and other local wildlife. Search "Why Native Plants" to learn more. The Board also encourages residents to help eliminate invasive plants like privet, bush honeysuckle, and English ivy because they crowd out and inhibit the seasonal transition of native plants on which the local ecosystem depends.

Planting guide adapted from <http://www.arboday.org/trees/planting/>.



WARD 1

Adella Gray

(479) 442-4958

ward1_pos1@fayetteville-ar.gov

Ordinance Review Committee

Transportation Committee

Sarah Marsh

(479) 287-4054

ward1_pos2@fayetteville-ar.gov

Nominating Committee

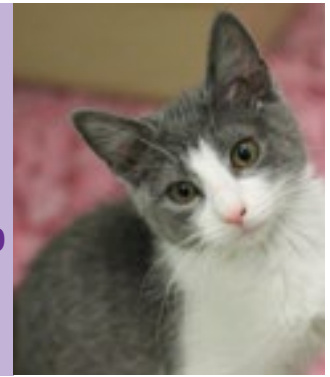
Water & Sewer Committee



FAYETTEVILLE ANIMAL SERVICES

- pets adopted: 251
- pets rescued: 36
- pets reunited: 203
- hours of volunteer service: 760
- visitors: 3,205
- donated: \$81,502

since 3/30/16



WARD 2

Mark Kinion

(479) 442-7868

ward2_pos1@fayetteville-ar.gov

Nominating Committee

Water & Sewer Committee

Matthew Petty

(479) 595-8703 (email preferred)

citycouncil@matthewpetty.org

Ordinance Review Committee

Transportation Committee

WARD 3

Justin Tennant

(479) 301-8677

ward3_pos1@fayetteville-ar.gov

Ordinance Review Committee

Transportation Committee

Martin W. Schoppmeyer Jr.

(479) 935-4605

ward3_pos2@fayetteville-ar.gov

Nominating Committee

Water & Sewer Committee

WARD 4

John La Tour

(479) 443-7878

ward4_pos1@fayetteville-ar.gov

Ordinance Review Committee

Water & Sewer Committee

Alan Long

(479) 304-0585

ward4_pos2@fayetteville-ar.gov

Nominating Committee

Transportation Committee

2015 CITY COUNCIL MEETINGS & AGENDA SESSIONS

City Council Meeting	April 5	5:30 p.m.	Room 219
City Council Agenda Session	April 12	4:30 p.m.	Room 326
City Council Meeting	April 19	5:30 p.m.	Room 219
City Council Agenda Session	April 26	4:30 p.m.	Room 326
City Council Meeting	May 3	5:30 p.m.	Room 219
City Council Agenda Session	May 10	4:30 p.m.	Room 326
City Council Meeting	May 17	5:30 p.m.	Room 219
City Council Agenda Session	May 31	4:30 p.m.	Room 326
City Council Meeting	June 7	5:30 p.m.	Room 219
City Council Agenda Session	June 14	4:30 p.m.	Room 326
City Council Meeting	June 21	5:30 p.m.	Room 219
City Council Agenda Session	June 28	4:30 p.m.	Room 326
City Council Meeting	July 5	5:30 p.m.	Room 219
City Council Agenda Session	July 12	4:30 p.m.	Room 326
City Council Meeting	July 19	5:30 p.m.	Room 219
City Council Agenda Session	July 26	4:30 p.m.	Room 326
City Council Meeting	August 2	5:30 p.m.	Room 219
City Council Agenda Session	August 9	4:30 p.m.	Room 326
City Council Meeting	August 16	5:30 p.m.	Room 219
City Council Agenda Session	August 30	4:30 p.m.	Room 326
City Council Meeting	September 6	5:30 p.m.	Room 219
City Council Agenda Session	September 13	4:30 p.m.	Room 326
City Council Meeting	September 20	5:30 p.m.	Room 219
City Council Agenda Session	September 27	4:30 p.m.	Room 326
City Council Meeting	October 4	5:30 p.m.	Room 219
City Council Agenda Session	October 11	4:30 p.m.	Room 326
City Council Meeting	October 18	5:30 p.m.	Room 219
City Council Agenda Session	October 25	4:30 p.m.	Room 326
City Council Meeting	November 1	5:30 p.m.	Room 219
City Council Agenda Session	November 8	4:30 p.m.	Room 326
City Council Meeting	November 15	5:30 p.m.	Room 219
City Council Agenda Session	November 29	4:30 p.m.	Room 326
City Council Meeting	December 6	5:30 p.m.	Room 219
City Council Agenda Session	December 13	4:30 p.m.	Room 326
City Council Meeting	December 20	5:30 p.m.	Room 219
City Council Agenda Session	December 27	4:30 p.m.	Room 326
City Council Meeting	January 3, 2017	5:30 p.m.	Room 219

CONTACT the City Clerk's Office for information about City Council meetings and City-Appointed Boards, Commissions, and Councils: city_clerk@fayetteville-ar.gov

FAYETTEVILLE MAPS, INCLUDING WARDS:

<http://www.fayetteville-ar.gov/384/GIS-Interactive-Maps>

Questions or comments? Please contact: Dede Peters

Community Outreach Coordinator

479-575-8302 | dpeters@fayetteville-ar.gov