

NOTIFICATION OF STREET/PARKING LOT CLOSURE FOR **Square 2 Square Bike Ride**

Closure of the following spaces has been granted:

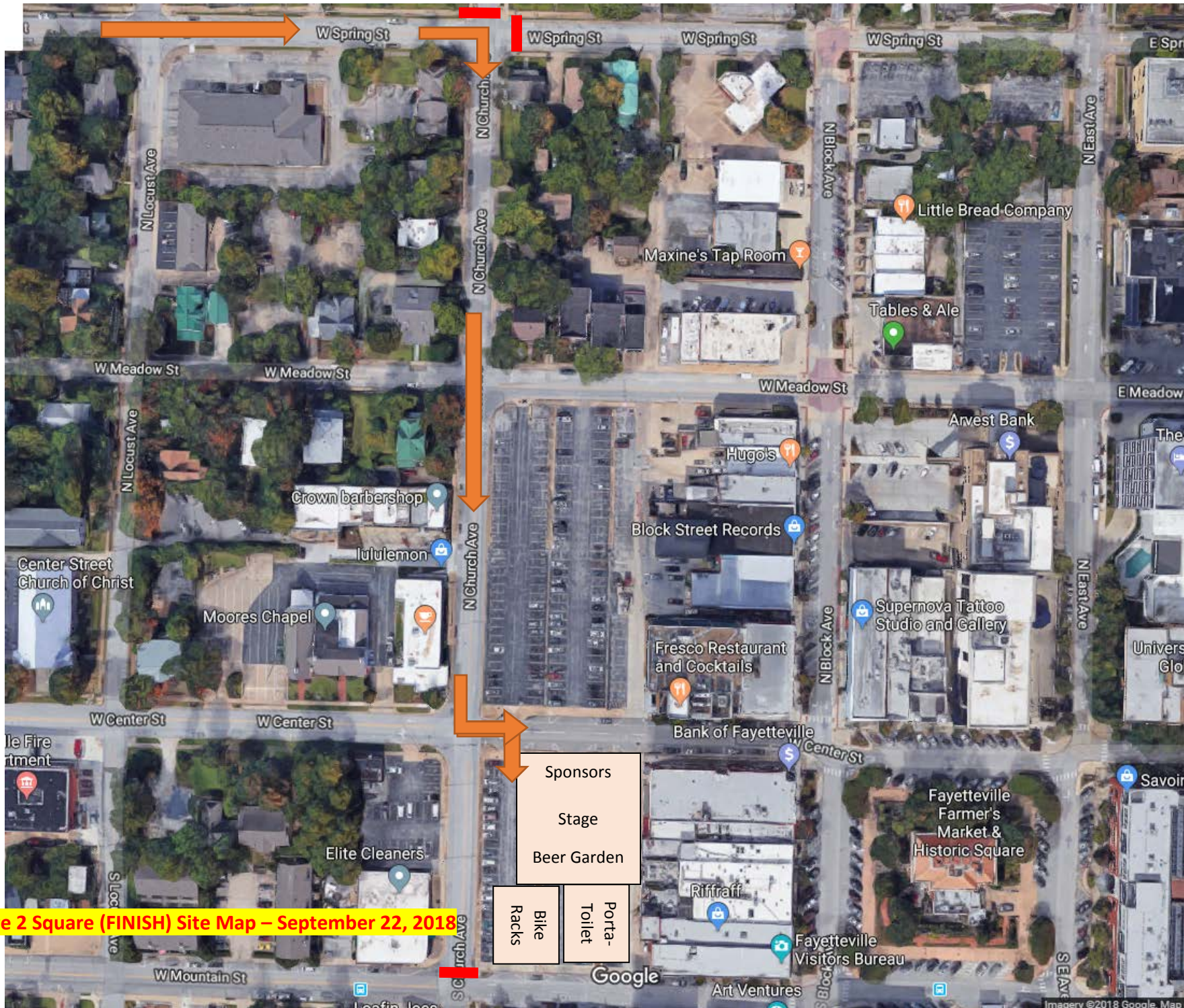
- 1.) **Church Street** (between Spring and Mountain)
- 2.) **Mountain/Church/Center Street Parking Lot**
- 3.) **Parking Spaces on the south side of Spring St** (from West to Church) ***SPRING STREET WILL REMAIN OPEN TO TRAFFIC.***
- 4.) **Parking Spaces on the west side of Church Ave** (from Spring to Mountain)

Closure is from 8:00am Sept 22 through 4:00pm Sept 22

**ALL VEHICLES MUST VACATE PARKING SPACES BY
7:00am Sept 22 for S2S Bike Ride.**

Any cars remaining in event space after this time will be relocated to the City lot on Mountain Street by NWA Towing (479) 966-4869

As part of the special event application process with the City of Fayetteville, **S2S Bike Ride** provided required notification of this in early May. This notice is to serve as a reminder regarding the upcoming event. You may contact parking@fayetteville-ar.gov or parks@fayetteville-ar.gov if you wish to comment on this closure.



Square 2 Square (FINISH) Site Map - September 22, 2018

- Sponsors
- Stage
- Beer Garden
- Bike Racks
- Toilet
- Porta-Toilet

Square to Square Bike Ride - Dedicated Bike Lanes
Parking Spaces must be Vacated by 7:00AM, Saturday, September 22, 2018

